

## Final Report Influenza Vaccine Coverage Residents of Long Term Care Facilities (LTCF) British Columbia, 2022/23

### Background

Vaccine coverage assessment is an important part of a quality immunization program and serves three main functions:

- i) Identifying populations with low levels of vaccine coverage
- ii) Evaluating the delivery of immunization programs
- iii) Informing program planning

The target for coverage among residents of long term care facilities is 90%.<sup>1</sup>

### Objective

To quantify the percentage of residents of long term care facilities (LTCF) in British Columbia vaccinated against influenza during the 2022/23 influenza season.

### Results

Reporting facilities (**Table 1**)

- 293/346 (85%) of LTCF in BC reported data for this report. These include 258/297 (87%) of publicly funded or contracted long term care facilities, and 35/48 (73%) of privately funded facilities. The remaining 15% of facilities located mainly in Fraser and Vancouver Island Health did not report this season.

2022/23 influenza vaccine coverage among reporting facilities (**Figure 1, Table 2, Figure 2**)

- 88% (22,906/26,117) of residents were vaccinated, with no difference in resident coverage in publicly funded or contracted LTCF compared to privately funded facilities
- Coverage ranged from 85% to 91% by health authority
- Coverage ranged from 79% to 92% by health service delivery area
- Coverage ranged from 56% to 100% by LTCF
- 153/346 (44%) of LTCF met the 90% coverage target

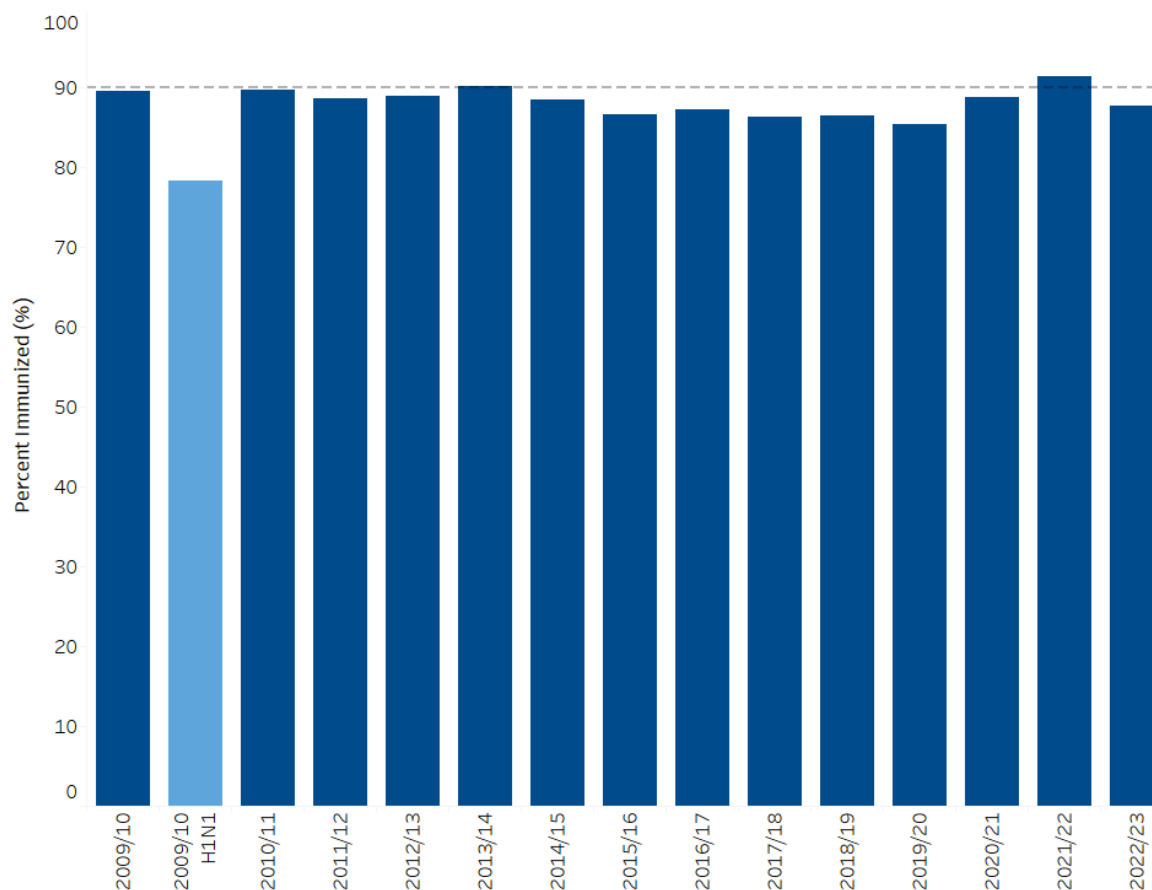
---

<sup>1</sup>Immunize BC: a strategic framework for immunization in B.C. 2007. Victoria, BC: British Columbia Ministry of Health. Available at: <http://www.health.gov.bc.ca/library/publications/year/2007/immunizebc.pdf>

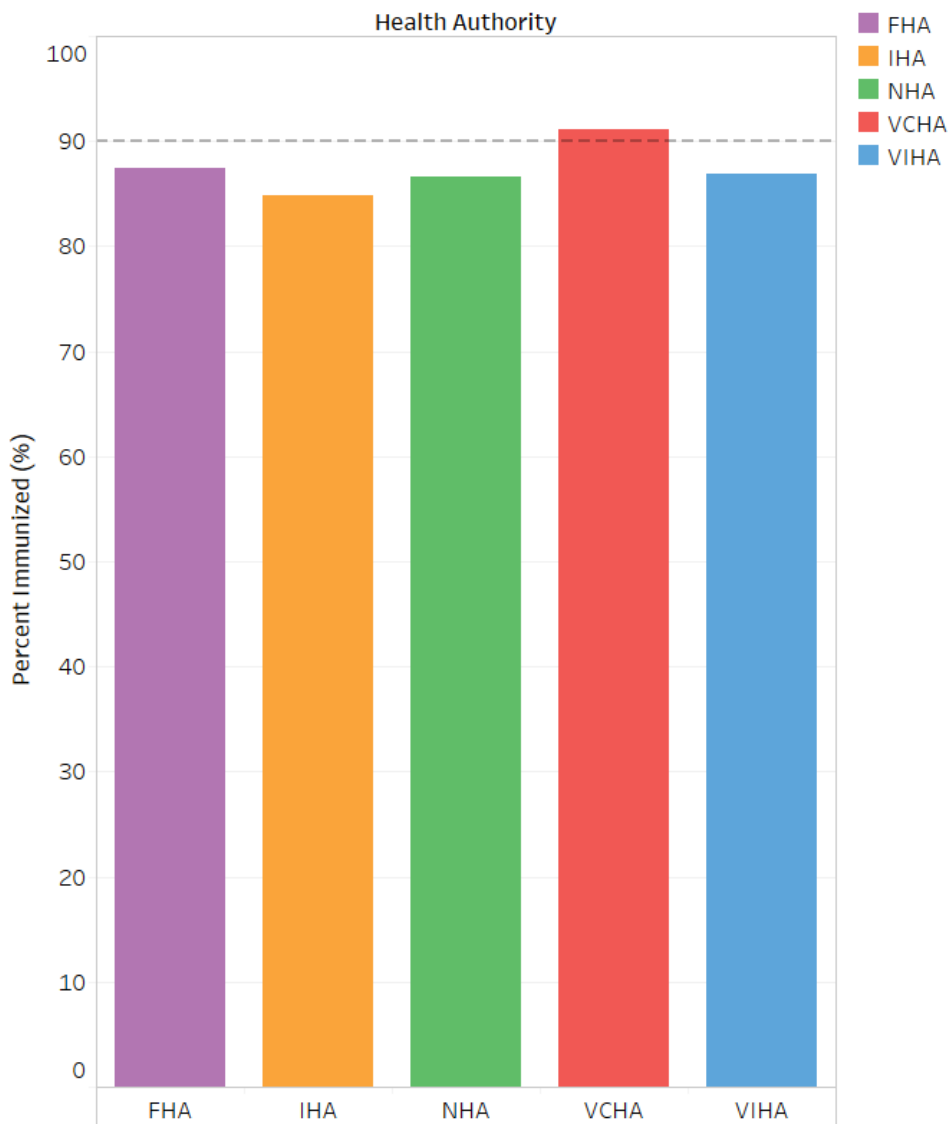
**Table 1.** Number and percent of LTCF for which coverage rates were reported, by health authority, 2022/23

Health authority	Long term care facilities			
	Reported	Did not Report	Total	% reported
Interior	79	0	79	100
Fraser	62	30	92	67
Vancouver Coastal	68	0	68	100
Vancouver Island	60	23	83	72
Northern	24	0	24	100
<b>British Columbia</b>	<b>293</b>	<b>53</b>	<b>346</b>	<b>85</b>

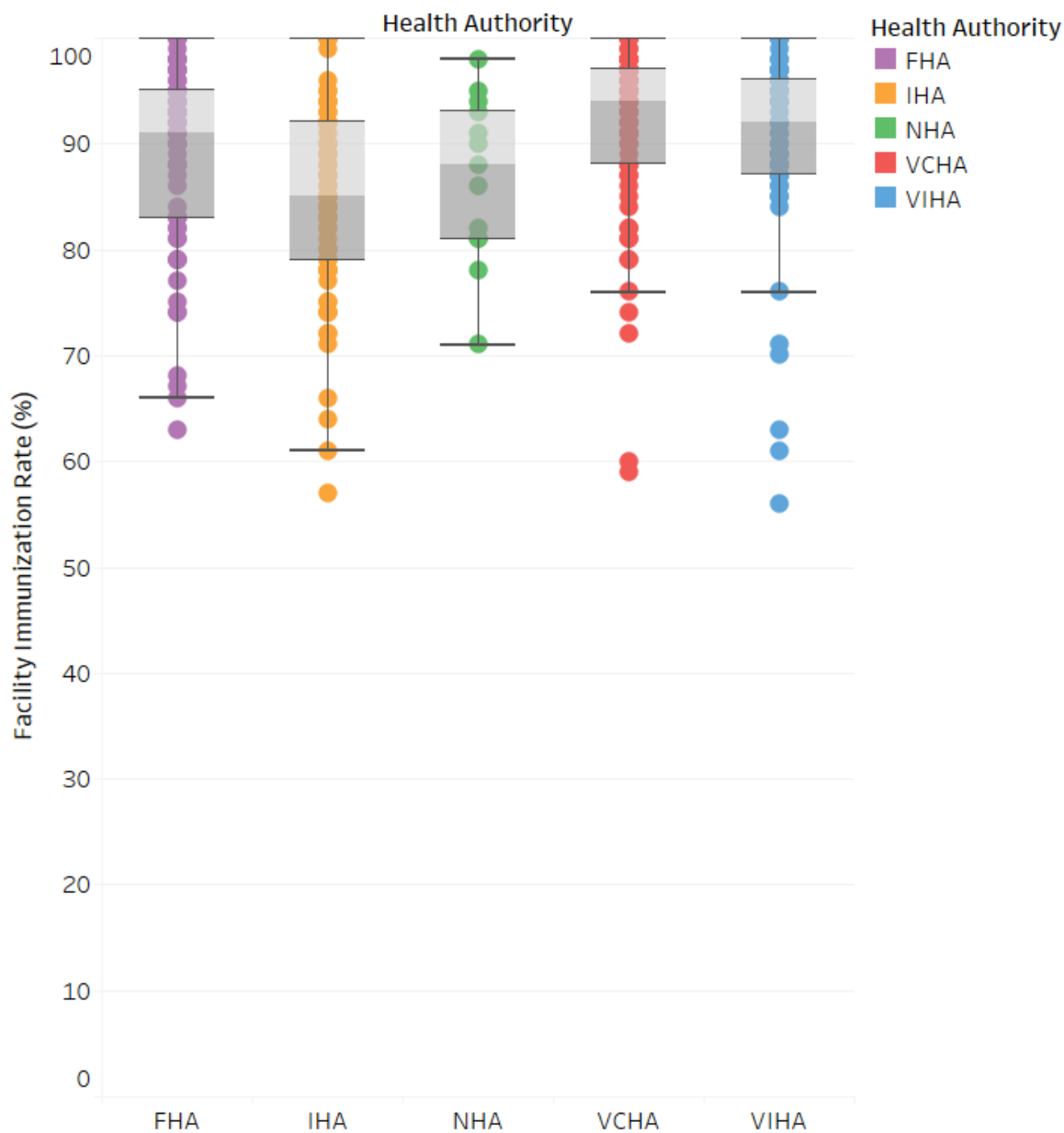
Results shown in the three figures and Table 2 are based on data from the 293 reporting facilities only.



**Figure 1.** Influenza vaccine coverage among LTCF residents by influenza season, British Columbia 2009/10 - 2022/23



**Figure 2.** Influenza vaccine coverage for residents of long term care facilities by health authority, British Columbia 2022/23



**Figure 3.** Distribution of facility-specific influenza vaccine coverage for residents of LTCF by health authority, British Columbia 2022/23

**Figure 3** illustrates the distribution of influenza vaccine coverage for residents of LTCFs by facility in each health authority for the 2022/23 influenza season. The horizontal lines represent the minimum\*, 25<sup>th</sup> percentile, median (transition from light to dark grey), 75<sup>th</sup> percentile, and maximum.

\* After excluding outliers. Outliers are those below the 25<sup>th</sup> percentile minus 1.5 times the interquartile range.

**Table 2.** Immunization coverage for residents of long term care facilities by health authority and health service delivery area, 2012/13 to 2022/23

		Influenza Season										
Health region		2012/13	2013/14	2014/15	2015/16	2016/17	2017/18	2018/19	2019/20	2020/21	2021/22	2022/23
<b>INTERIOR</b>	immunized	4,883	3,717	5,437	5,151	5,491	5,315	5,475	5,630	2,321	4,902	5,058
	total residents	5,843	4,433	6,308	6,162	6,713	6,671	6,802	6,998	2,728	5,502	5,964
	% immunized	84	84	86	84	82	80	80	81	85	89	85
East Kootenay	immunized	570	416	451	383	453	398	402	390	NA	434	431
	total residents	650	616	545	470	610	505	538	511	NA	508	524
	% immunized	88	68	83	81	74	79	75	76	--	85	82
Kootenay Boundary	immunized	581	512	666	477	489	682	703	591	525	525	479
	total residents	809	620	805	582	663	888	873	783	609	563	581
	% immunized	72	83	83	82	74	77	81	76	86	93	82
Okanagan	immunized	2,773	1,630	3,055	3,060	3,230	3,072	3,131	3,090	1,605	2,771	2,707
	total residents	3,315	1,929	3,549	3,689	3,913	3,767	3,906	3,970	1,903	3,179	3,177
	% immunized	84	84	86	83	83	82	80	78	84	87	85
Thomps Carib Shuswap	immunized	959	1,159	1,265	1,231	1,319	1,163	1,239	1,559	191	1,172	1,441
	total residents	1,069	1,268	1,409	1,421	1,527	1,511	1,485	1,734	216	1,252	1,682
	% immunized	90	91	90	87	86	77	83	90	88	94	86
<b>FRASER</b>	immunized	8,812	8,608	7,727	8,539	8,651	8,593	7,771	5,718	6,954	5,881	5,931
	total residents	9,679	9,411	8,543	9,703	9,804	9,861	8,734	6,532	7,699	6,468	6,784
	% immunized	91	91	90	88	88	87	89	88	90	91	87
Fraser East	immunized	1,559	1,543	1,643	1,456	1,299	1,530	1,111	1,172	1,548	1,227	938
	total residents	1,768	1,721	1,849	1,631	1,506	1,736	1,271	1,371	1,732	1,326	1,090
	% immunized	88	90	89	89	86	88	87	86	89	93	86
Fraser North	immunized	3,052	3,121	2,942	2,969	2,985	2,928	2,701	2,101	2,268	1,958	1,827
	total residents	3,334	3,441	3,231	3,295	3,409	3,287	3,026	2,304	2,515	2,216	2,121
	% immunized	92	91	91	90	88	89	89	91	90	88	86
Fraser South	immunized	4,201	3,944	3,142	4,114	4,367	4,135	3,959	2,445	3,138	2,696	3,166
	total residents	4,577	4,249	3,463	4,777	4,889	4,838	4,437	2,857	3,452	2,926	3,573
	% immunized	92	93	91	86	89	85	89	86	91	92	89

**Table 2 (cont'd).** Immunization coverage for residents of long term care facilities by health authority and health service delivery area, 2012/13 to 2022/23

Health region		Influenza Season										
		2012/13	2013/14	2014/15	2015/16	2016/17	2017/18	2018/19	2019/20	2020/21	2021/22	2022/23
<b>VANCOUVER COASTAL</b>	immunized	6,387	6,178	4,316	6,258	5,926	5,149	5,442	2,355	273	6,570	6,690
	total residents	6,960	6,631	4,675	6,809	6,470	5,655	6,184	2,627	298	7,076	7,346
	% immunized	92	93	92	92	92	91	88	90	92	93	91
Richmond	immunized	664	774	252	809	692	419	636	242	NA	890	854
	total residents	705	818	257	861	731	458	675	246	NA	947	943
	% immunized	94	95	98	94	95	91	94	98	--	94	91
Vancouver	immunized	4,013	3,896	3,141	3,882	3,709	3,350	3,422	1,388	200	3,947	3,992
	total residents	4,345	4,178	3,362	4,225	4,031	3,657	3,842	1,553	216	4,287	4,400
	% immunized	92	93	93	92	92	92	89	89	93	92	91
N Shore/Coast Garibaldi	immunized	1,710	1,508	923	1,567	1,525	1,380	1,384	725	73	1,733	1,844
	total residents	1,910	1,635	1,056	1,723	1,708	1,540	1,667	828	82	1,842	2,003
	% immunized	90	92	87	91	89	90	83	88	89	94	92
<b>VANCOUVER ISLAND</b>	immunized	5,579	5,792	6,051	6,025	5,911	5,712	5,839	6,215	5,675	5,860	4,253
	total residents	6,370	6,502	7,063	7,332	6,814	6,486	6,640	7,171	6,405	6,357	4,898
	% immunized	88	89	86	82	87	88	88	87	89	92	87
South Van Island	immunized	2,974	3,109	3,462	3,512	3,364	3,092	3,074	3,458	2,882	3,107	1,979
	total residents	3,424	3,471	4,103	4,373	3,953	3,541	3,513	3,967	3,228	3,319	2,223
	% immunized	87	90	84	80	85	87	88	87	89	94	89
Central Van Island	immunized	1,993	2,058	1,978	1,938	1,958	1,989	2,111	2,106	2,063	2,028	1,685
	total residents	2,262	2,326	2,275	2,278	2,156	2,214	2,369	2,432	2,378	2,255	2,017
	% immunized	88	88	87	85	91	90	89	87	87	90	84
North Van Island	immunized	612	625	611	575	589	640	654	651	730	725	589
	total residents	684	705	685	681	705	731	758	772	799	783	658
	% immunized	89	89	89	84	84	88	86	84	91	93	90

**Table 2 (cont'd).** Immunization coverage for residents of long term care facilities by health authority and health service delivery area, 2012/13 to 2022/23

Health region		Influenza season										
		2012/13	2013/14	2014/15	2015/16	2016/17	2017/18	2018/19	2019/20	2020/21	2021/22	2022/23
<b>NORTHERN</b>	immunized	1,123	1,022	1,001	1,017	998	971	993	839	992	1,012	974
	total residents	1,257	1,128	1,118	1,139	1,150	1,165	1,141	980	1,151	1,112	1,125
	% immunized	89	91	90	89	87	83	87	86	86	91	87
Northwest	immunized	233	244	247	252	248	246	234	250	245	251	266
	total residents	283	284	270	279	273	282	277	280	279	267	290
	% immunized	82	86	91	90	91	87	84	89	88	94	92
Northern Interior	immunized	556	551	534	558	538	520	538	497	541	551	512
	total residents	597	594	602	610	628	630	612	578	620	603	588
	% immunized	93	93	89	91	86	83	88	86	87	91	87
Northeast	immunized	334	227	220	207	212	205	221	92	206	210	196
	total residents	377	250	246	250	249	253	252	122	252	242	247
	% immunized	89	91	89	83	85	81	88	75	82	87	79
<b>BC</b>	immunized	26,784	25,317	24,532	26,990	26,977	25,749	25,520	20,757	16,215	24,225	22,906
	total residents	30,109	28,105	27,707	31,145	30,951	29,838	29,501	24,308	18,281	26,515	26,117
	% immunized	89	90	89	87	87	86	87	85	89	91	88