

Influenza vaccination coverage for staff of residential care facilities British Columbia, 2016/17

Background

Immunization coverage assessment is an important part of a quality immunization program and serves three main functions:

- i) Identifying populations with low levels of immunization coverage
- ii) Evaluating the delivery of immunization programs
- iii) Informing program planning

Targets for coverage in among staff of long term care facilities at the provincial and national levels are 80%, and 95% at the national level for staff with extensive resident contact.^{1,2}

From the 2007/08 to 2011/12 influenza seasons, influenza vaccination coverage for staff of residential care facilities in BC ranged from 49% to 67%. Coverage increased following implementation of the new BC Influenza Prevention Policy, ranging from 75% to 79% for seasons 2012/13 through 2015/16.

The BC Influenza Prevention Policy requires healthcare workers in all health authorities to be vaccinated against influenza or to wear a surgical mask while in patient care areas during the influenza season. The policy covers all health authority staff who work in patient care areas: unionized and excluded staff, volunteers, paramedics, students, contractors, and physicians. The policy was widely communicated and its implementation was accompanied by strategies such as the use of peer immunizers. Staff reporting of their influenza immunization was enabled through an online immunization self-reporting website. Disciplinary measures for staff who do not comply with the Policy which were enacted beginning 2013/4 include loss of privileges and termination of employment.

Objective

To quantify the percentage of staff in residential care facilities in British Columbia who were vaccinated against influenza during the 2016/17 influenza season.

Methods

Influenza immunization coverage for healthcare workers in residential care facilities was calculated at the facility level, health service delivery area level, health authority level, and for BC. There are five regional health authorities, which are comprised of 16 health service delivery areas.

1. Immunize BC: a strategic framework for immunization in B.C. 2007. Victoria, BC: British Columbia Ministry of Health. Available at: <http://www.health.gov.bc.ca/library/publications/year/2007/immunizebc.pdf>

2. Public Health Agency of Canada. Final Report of Outcomes from the National Consensus Conference for Vaccine-Preventable Diseases in Canada. *Can Commun Dis Rep* 2007;33S3:1-56. Available at: <http://www.phac-aspc.gc.ca/publicat/ccdr-rmtc/08pdf/34s2-eng.pdf>

Residential care facilities were defined as facilities with 50% or more residents aged 65 years and older that are either:

- licensed under the Hospital Act; or
- licensed under the Community Care and Assisted Living Act and provide some health care services.

There were two sources of influenza vaccination coverage data: an anonymised individual healthcare worker level dataset from the electronic Workplace Health Indicator Tracking and Evaluation (WHITE) database of occupational health records, and data entered by health authority staff into a BC Centre for Disease Control (BCCDC) web application. When data from both sources were available for an individual institution, WHITE data were used.

This was the fifth season of influenza coverage reporting using WHITE data. Staff whose records were included in the analysis must have been employed by a health authority and have worked for a minimum of 8 hours from December 1, 2016 to February 28, 2017. Staff who were not on a health authority's payroll (contracted staff, trainees, etc.) were not included in the WHITE database. Physicians and medical residents were not included in the WHITE database for most facilities. The BCCDC web application data were aggregate data at the facility level, and were obtained by health authority staff directly from facilities or using administrative, including WHITE, databases.

Staff were defined as all persons who work or train on a full time, part time or casual basis in a facility or hospital who have direct or indirect contact with patients or residents, regardless of whether they are health care providers. This includes administrative and non-patient care staff (e.g., medical records, housekeeping and dietary) and excludes volunteers. This definition of staff is unchanged since the 2013/14 season and is based on the Ministry's Performance Agreements.

Healthcare workers were counted in the facility and region where they work, rather than by their health authority employer. Some healthcare workers worked at multiple facilities during the influenza season. For coverage statistics at the provincial, health authority or health service delivery area level, each healthcare worker was included only in the facility where they worked the most hours. For facility level coverage statistics, healthcare workers were included in each facility where they worked for at least 8 hours during the influenza season. This is the same method that was used for last season's (2015/16) coverage report.

Changes in coverage rates over time should be interpreted with caution as the data collection methods have changed from aggregate facility level reporting of immunization coverage as of February 28th each year prior to the 2012/13 season to individual healthcare worker level reporting using WHITE data for facilities that use WHITE, and there have been incremental methodological changes in the use of WHITE data.

The results were also calculated excluding privately funded facilities. The remaining subset of facilities are health authority owned and operated, and contracted.

Results

Reporting of facilities (tables 1 and 2)

- Out of 365 residential care facilities in BC, 345/353 (98%) of facilities that report healthcare worker influenza immunization coverage for residential care staff are included in this report
- 95/345 (28%) facilities used data from the WHITE database; 250/345 (72%) facilities used data entered by health authority staff into the BCCDC web application because WHITE data were not available

2016/17 influenza vaccination coverage (tables 3 and 4; figures 1 to 5)

- 74% (29,891/40,243) of staff of residential care facilities in BC were vaccinated against influenza, a slight decrease from the prior three years (76% in 2015/16, 77% in 2014/15 and 79% in 2013/14)
- 68% to 82% coverage was the range across the five regional health authorities
- 60% to 86% coverage was the range across the sixteen health service delivery areas
- 1% to 100% coverage was the range across all residential care facilities in BC
- 174//345 (50%) facilities met the provincial and national target of 80% coverage, compared with 163/324 (50%) in 2015/16, 151/296 (51%) in 2014/15 and 230/305 (75%) in 2013/14

Results excluding privately funded facilities (tables 6 and 7)

- 248/251 (99%) publicly funded or contracted residential facilities that report coverage for residential care staff were included
- 74% (21,600/29,374) of staff were vaccinated against influenza

Summary

Influenza immunization data were available for the majority (98%) of residential care facilities included in this report. Influenza vaccination coverage for staff of residential care facilities in BC was 74%, below the Immunize BC target of 80% coverage. Coverage was also 74% when privately funded facilities were excluded from the analysis.

Within each health authority, there was a wide range of influenza vaccination coverage for residential care facilities. The reasons behind the variation in vaccination coverage between facilities were not assessed.

Influenza immunization coverage for residential facility healthcare workers in BC was lower for the 2016/17 season (74%), compared to the 2015/16 season (76%), 2014/15 season (77%) and 2013/14 (79%) season. Despite the downward trend in coverage since 2013/14, coverage during the last four influenza seasons was much higher than before the BC Influenza Prevention Policy was implemented.

Tables and Figures

Table 1: Residential care facilities included by health authority, 2016/17

Health authority	Residential care facilities				
	Reported	Excluded from report*	Included in report [†]	% reported	Total LTC facilities [†]
Interior	85	-	87	98	87
Fraser	100	-	103	97	103
Vancouver Coastal	60	-	62	97	62
Vancouver Island	85	3	86	99	89
Northern	15	9	15	100	24
British Columbia	345	12	353	98	365

*LTC facilities were excluded from the denominator for this report if they were based in an acute care facility and the HCW immunization coverage data for these facilities could not be disaggregated from the acute care facility.

[†]The total number of residential care facilities in BC is 365. However only the 353 that are expected to report residential care healthcare worker influenza immunization coverage are included in this report.

Table 2: Data source used to calculate influenza vaccination coverage, 2016/17

Health authority	Residential care facilities		
	WHITE*	Aggregate*	Total
Interior	33	52	85
Fraser	15	85	100
Vancouver Coastal	18	42	60
Vancouver Island	16	69	85
Northern	13	2	15
British Columbia	95	250	345

Note: WHITE data were the 1st choice and aggregate reporting was the 2nd choice.

* WHITE: facility influenza immunization coverage statistics were calculated from the Workplace Health Indicator Tracking and Evaluation database.

Aggregate: facility influenza immunization coverage statistics were reported in aggregate format by health authority staff using an online database. Aggregate reporting from Fraser Health does not include casual staff.

Table 3: Influenza vaccination coverage for staff of residential care facilities by health authority and health service delivery area, 2016/17

Health authority	Residential care facility staff		
	Immunized	Total	%
Interior	6,366	8,906	71
East Kootenay	703	1,029	68
Kootenay Boundary	633	915	69
Okanagan	3,622	5,049	72
Thompson/Cariboo/Shuswap	1,408	1,913	74
Fraser	9,653	12,708	76
Fraser East	1,752	2,293	76
Fraser North	3,495	4,528	77
Fraser South	4,406	5,887	75
Vancouver Coastal	6,789	8,233	82
Richmond	725	847	86
Vancouver	4,612	5,507	84
N Shore/Coast Garibaldi	1,452	1,879	77
Vancouver Island	6,005	8,834	68
South Vancouver Island	3,229	4,748	68
Central Vancouver Island	2,020	3,120	65
North Vancouver Island	756	966	78
Northern	1,078	1,562	69
Northwest	292	416	70
Northern Interior	597	833	72
Northeast	189	313	60
BC	29,891	40,243	74

Table 4: Residential care facility staff influenza vaccination coverage by health authority, 2007/08 to 2016/17

Health authority	Influenza immunization coverage (%) for staff of residential care facilities by influenza season									
	2007/08	2008/09	2009/10	2010/11	2011/12	2012/13	2013/14	2014/15	2015/16	2016/17
Interior	60	56	42	48	49	69	73	74	72	71
Fraser	73	67	53	58	63	80	87	82	79	76
Vancouver Coastal	76	74	61	69	67	83	83	85	86	82
Vancouver Island	58	58	43	47	51	70	72	71	69	68
Northern	58	49	32	49	47	70	72	71	63	69
British Columbia	67	64	49	56	57	75	79	77	76	74

Figure 1: Influenza immunization coverage for staff of residential care facilities, 2007/08 to 2016/17

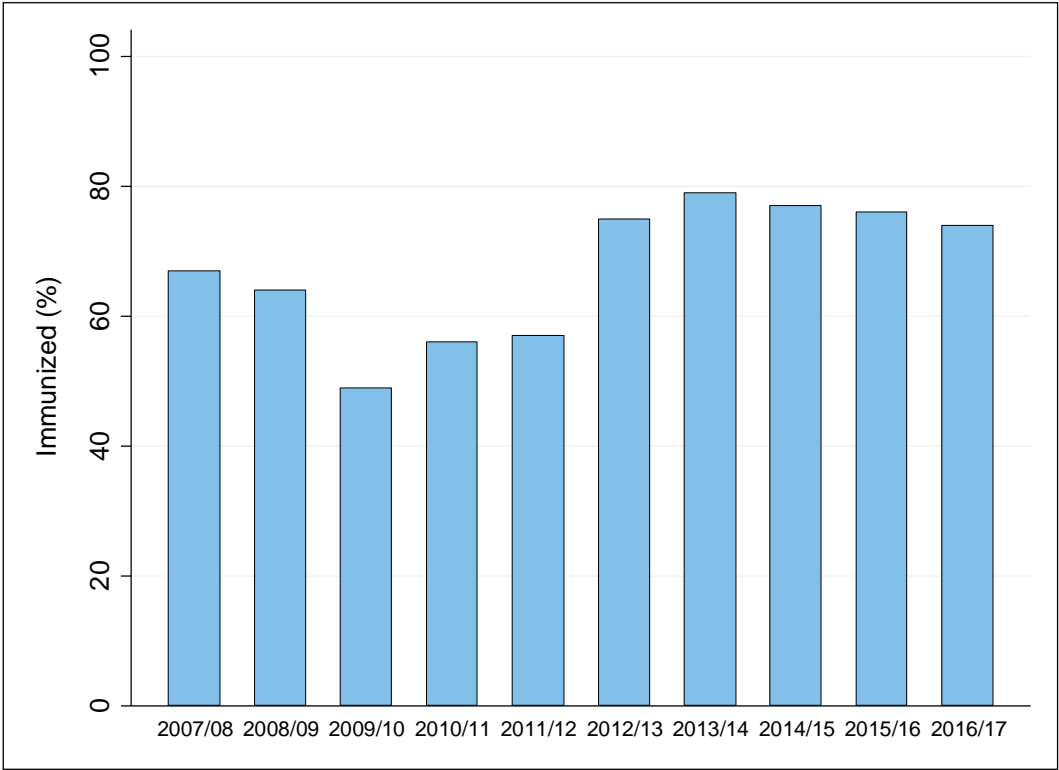


Figure 2: Influenza immunization coverage for staff of residential care facilities by health authority, 2016/17

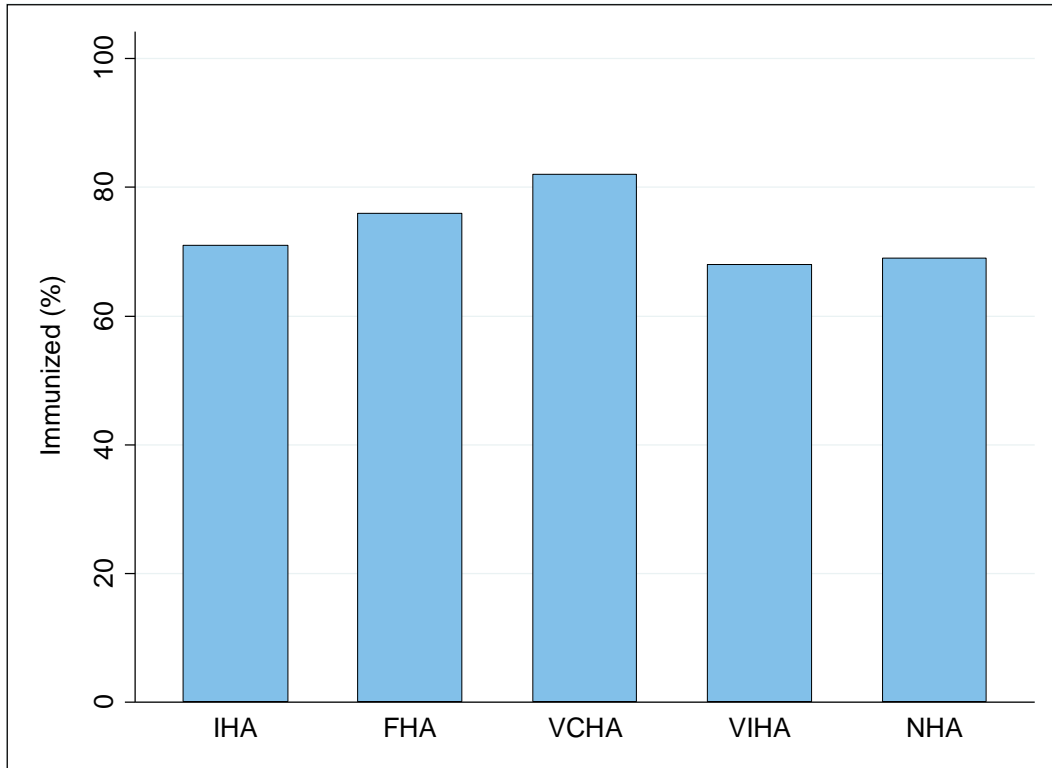


Figure 3: Influenza immunization coverage for staff of residential care facilities by health service delivery area, 2016/17

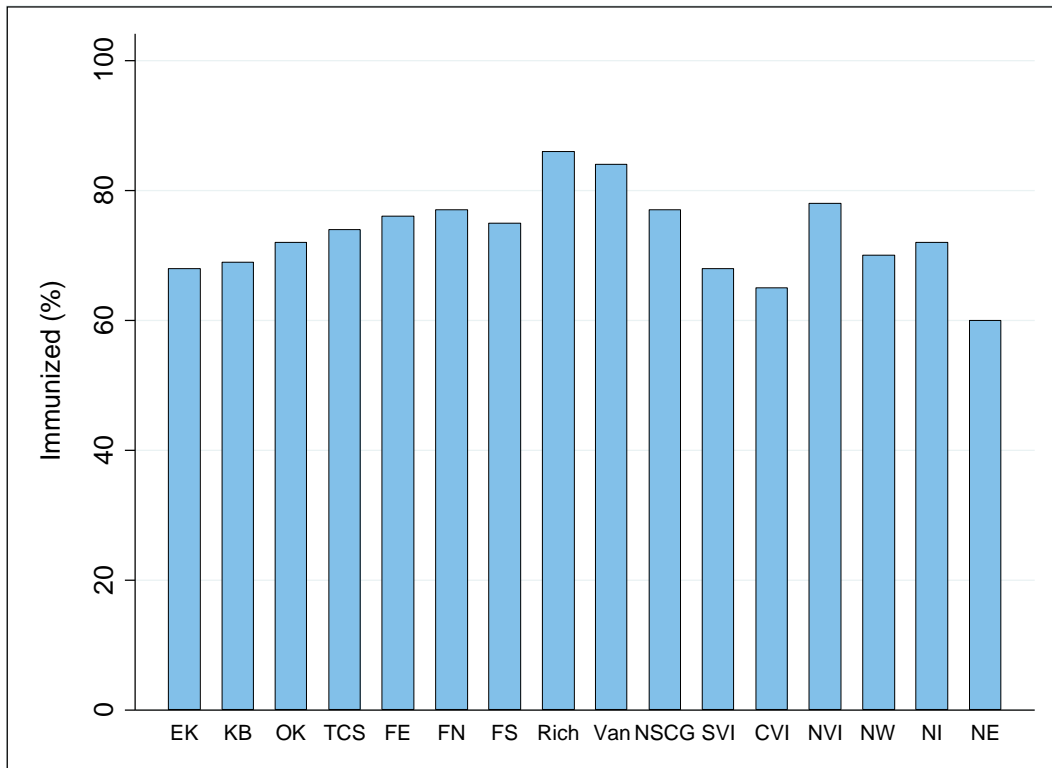


Figure 4: Influenza immunization coverage for staff of residential care facilities by facility size (number of staff), 2016/17

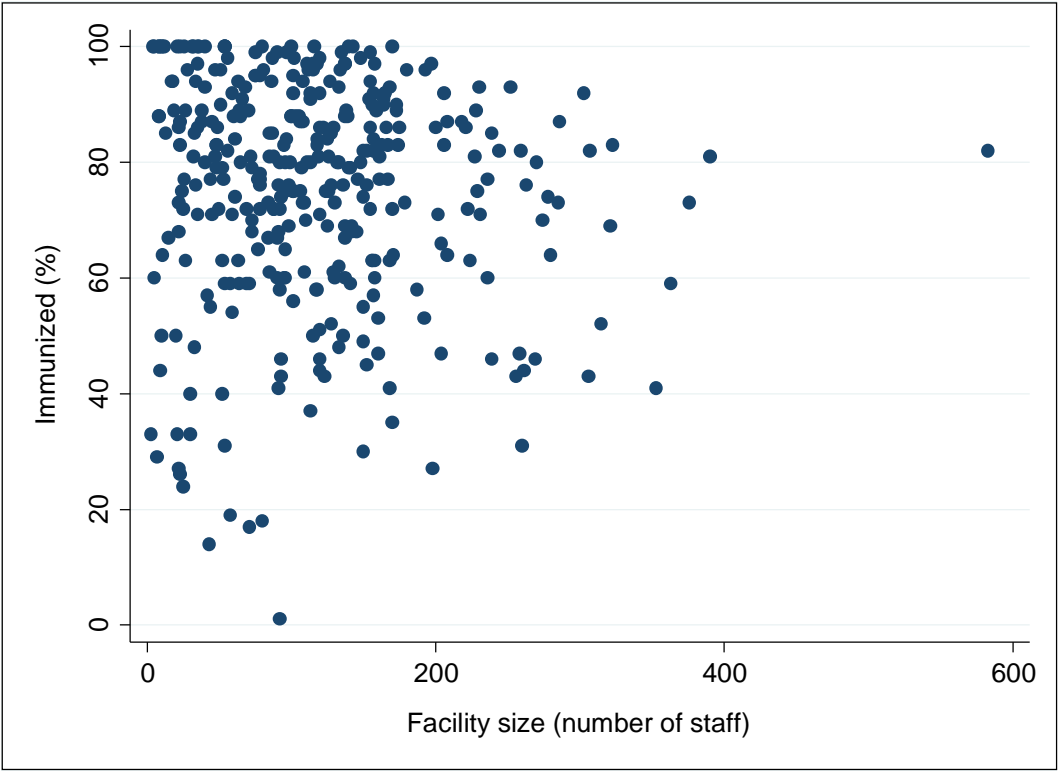


Figure 5: Influenza immunization coverage for staff of residential care facilities by facility within each health authority, 2016/17

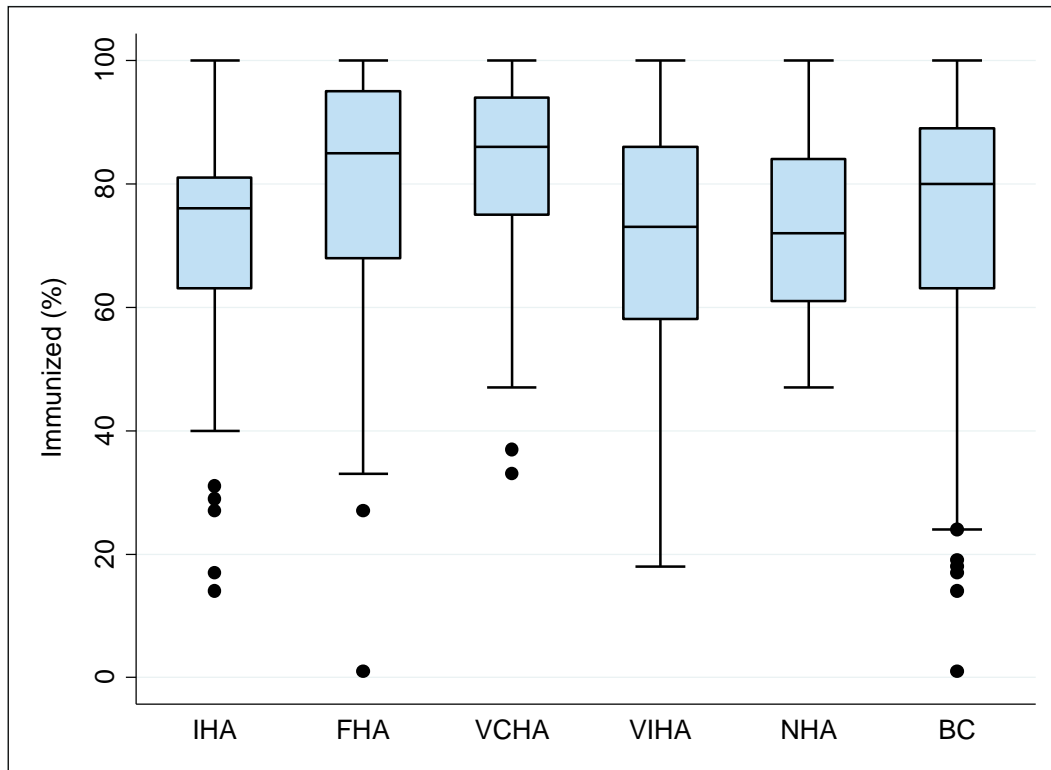


Figure 5 illustrates the range of influenza immunization coverage for residential care facilities in each health authority and for BC for the 2016/17 influenza season. The horizontal line below each box represents the lowest observed coverage value that is greater than or equal to the first quartile minus 1.5 times the interquartile range; the lower edge of each box represents the 25th percentile; the solid horizontal line within each box represent the median coverage value; the upper edge of each box represents the 75th percentile; the horizontal line above each box represents the highest observed coverage value that is less than or equal to the third quartile plus 1.5 times the interquartile range; and the dots represent facilities with unusually high or low coverage values which are outliers.

Table 5: Immunization coverage for staff of residential care facilities by health authority and health service delivery area, 2008/09 to 2016/17

Health authority		2008/09	2009/10	2009/10 H1N1	2010/11	Influenza season					2016/17
						2011/12	2012/13	2013/14	2014/15	2015/16	
INTERIOR	immunized	4,196	3,300	-	3,606	4,359	5,386	4,801	5,819	5,627	6,366
	total staff	7,491	7,913	-	7,576	8,807	7,815	6,547	7,878	7,803	8,906
	% immunized	56	42	-	48	49	69	73	74	72	71
East Kootenay	immunized	211	303	-	235	277	655	626	594	650	703
	total staff	400	786	-	633	690	946	935	802	1,054	1,029
	% immunized	53	39	-	37	40	69	67	74	62	68
Kootenay Boundary	immunized	365	260	-	307	324	538	583	522	546	633
	total staff	859	824	-	878	777	881	836	809	779	915
	% immunized	42	32	-	35	42	61	70	65	70	69
Okanagan	immunized	2,363	1,809	-	2,075	3,051	3,181	2,272	3,286	3,117	3,622
	total staff	4,142	4,572	-	4,332	5,943	4,640	3,105	4,515	4,208	5,049
	% immunized	57	40	-	48	51	69	73	73	74	72
Thomps Carib Shuswap	immunized	1,257	928	-	989	707	1,012	1,320	1,417	1,314	1,408
	total staff	2,090	1,731	-	1,733	1,397	1,348	1,671	1,752	1,762	1,913
	% immunized	60	54	-	57	51	75	79	81	75	74
FRASER	immunized	7,043	5,790	5,661	6,262	6,903	8,756	6,059	8,247	7,494	9,653
	total staff	10,500	10,890	10,795	10,746	11,041	10,955	6,937	10,084	9,457	12,708
	% immunized	67	53	52	58	63	80	87	82	79	76
Fraser East	immunized	1,246	1,118	1,010	1,303	1,370	1,409	875	1,434	1,533	1,752
	total staff	1,994	2,185	2,179	2,109	2,093	1,839	999	1,755	1,907	2,293
	% immunized	62	51	46	62	65	77	88	82	80	76
Fraser North	immunized	2,686	2,187	2,155	2,294	2,616	3,362	2,589	3,577	2,801	3,495
	total staff	3,926	3,818	3,806	3,982	3,955	4,213	3,025	4,562	3,470	4,528
	% immunized	68	57	57	58	66	80	86	78	81	77
Fraser South	immunized	3,111	2,485	2,496	2,665	2,917	3,985	2,595	3,236	3,160	4,406
	total staff	4,580	4,887	4,810	4,655	4,993	4,903	2,913	3,767	4,080	5,887
	% immunized	68	51	52	57	58	81	89	86	77	75

Table 5 (continued): Immunization coverage for staff of residential care facilities by health authority and health service delivery area, 2008/09 to 2016/17

Health authority		2008/09	2009/10	2009/10 H1N1	2010/11	Influenza season					
						2011/12	2012/13	2013/14	2014/15	2015/16	2016/17
VANCOUVER COASTAL	immunized	6,045	5,239	4,645	5,604	5,272	6,350	7,077	5,652	7,028	6,789
	total staff	8,185	8,564	8,564	8,073	7,816	7,652	8,491	6,672	8,215	8,233
	% immunized	74	61	54	69	67	83	83	85	86	82
Richmond	immunized	755	669	443	586	625	701	805	644	789	725
	total staff	951	930	930	820	903	803	918	706	894	847
	% immunized	79	72	48	71	69	87	88	91	88	86
Vancouver	immunized	3,818	3,342	3,138	3,734	3,445	4,196	4,827	3,881	4,493	4,612
	total staff	5,077	5,421	5,421	5,257	4,922	5,020	5,662	4,514	5,267	5,507
	% immunized	75	62	58	71	70	84	85	86	85	84
N Shore/Coast Garibaldi	immunized	1,472	1,228	1,064	1,284	1,202	1,453	1,445	1,127	1,746	1,452
	total staff	2,157	2,213	2,213	1,996	1,991	1,829	1,911	1,452	2,054	1,879
	% immunized	68	55	48	64	60	79	76	78	85	77
VANCOUVER ISLAND	immunized	4,528	3,596	-	4,101	4,166	5,852	6,068	6,350	6,240	6,005
	total staff	7,809	8,382	-	8,681	8,244	8,370	8,429	8,941	9,049	8,834
	% immunized	58	43	-	47	51	70	72	71	69	68
South Van Island	immunized	2,352	2,069	-	2,255	2,170	3,263	3,273	3,487	3,316	3,229
	total staff	4,027	4,364	-	4,322	4,016	4,563	4,475	4,992	4,936	4,748
	% immunized	58	47	-	52	54	72	73	70	67	68
Central Van Island	immunized	1,724	1,132	-	1,398	1,441	1,894	2,107	2,163	2,194	2,020
	total staff	2,931	3,043	-	3,283	3,218	2,828	3,106	3,117	3,212	3,120
	% immunized	59	37	-	43	45	67	68	69	68	65
North Van Island	immunized	452	395	-	448	555	695	688	700	730	756
	total staff	851	975	-	1,076	1,010	979	848	832	901	966
	% immunized	53	41	-	42	55	71	81	84	81	78

Table 5 (continued): Immunization coverage for staff of residential care facilities by health authority and health service delivery area, 2008/09 to 2016/17

Health authority		2008/09	2009/10	2009/10 H1N1	2010/11	Influenza season					2016/17
						2011/12	2012/13	2013/14	2014/15	2015/16	
NORTHERN	immunized	779	529	424	777	835	1,273	1,035	1,099	974	1,078
	total staff	1,578	1,651	1,647	1,584	1,792	1,828	1,432	1,558	1,544	1,562
	% immunized	49	32	26	49	47	70	72	71	63	69
Northwest	immunized	183	177	132	284	296	394	287	327	271	292
	total staff	514	434	457	458	511	495	368	401	382	416
	% immunized	36	41	29	62	58	80	78	82	71	70
Northern Interior	immunized	427	270	225	369	423	616	574	594	542	597
	total staff	652	828	801	842	875	866	769	857	843	833
	% immunized	65	33	28	44	48	71	75	69	64	72
Northeast	immunized	169	82	67	124	116	263	174	178	161	189
	total staff	412	389	389	284	406	467	295	300	319	313
	% immunized	41	21	17	44	29	56	59	59	50	60
BC	immunized	22,591	18,454	-	20,350	21,535	27,617	25,040	27,167	27,363	29,891
	total staff	35,563	37,400	-	36,660	37,700	36,620	31,836	35,133	36,068	40,243
	% immunized	64	49	-	56	57	75	79	77	76	74

Coverage excluding privately funded residential care facilities

Table 6: Number and percent of residential care facilities reporting influenza vaccination coverage for staff by health authority, 2016/17
(excluding privately funded residential care facilities)

Health authority	Residential care facilities		
	Reported	Total	% reported
Interior	54	55	98
Fraser	90	91	99
Vancouver Coastal	22	22	100
Vancouver Island	69	70	99
Northern	13	13	100
British Columbia	248	251*	99

*LTC facilities were excluded from the denominator if they are based in an acute care facility and the HCW immunization coverage data for these facilities could not be disaggregated from the acute care facility.

Table 7: Influenza vaccination coverage for staff of residential care facilities by health authority and health service delivery area, 2016/17
(excluding privately funded residential care facilities)

Health authority	Residential care facility staff		
	Immunized	Total	%
Interior	3,744	5,089	74
East Kootenay	358	454	79
Kootenay Boundary	400	560	71
Okanagan	1,908	2,587	74
Thompson/Cariboo/Shuswap	1,078	1,488	72
Fraser	9,009	11,858	76
Fraser East	1,681	2,218	76
Fraser North	3,393	4,399	77
Fraser South	3,935	5,241	75
Vancouver Coastal	2,392	3,015	79
Richmond	332	386	86
Vancouver	1,260	1,442	87
N Shore/Coast Garibaldi	800	1,187	67
Vancouver Island	5,473	8,031	68
South Vancouver Island	2,793	4,147	67
Central Vancouver Island	1,924	2,918	66
North Vancouver Island	756	966	78
Northern	982	1,381	71
Northwest	292	416	70
Northern Interior	501	652	77
Northeast	189	313	60
BC	21,600	29,374	74

APPENDIX

Additional vaccination and Policy compliance information for staff of residential care facilities British Columbia, 2016/17

Since 2013/14, health authority staff covered by the Influenza Prevention Policy have been required to self-report their influenza vaccination via an online self-reporting website. For the first time, in the 2015/16 season, all staff were asked to self-report either being vaccinated, or declining vaccination with the commitment to wear a mask in patient care areas throughout the influenza season. Online self-reporting was only possible for facilities that use the electronic Workplace Health Indicator Tracking and Evaluation (WHITE) database of occupational health records.

This appendix presents self-reported compliance with the policy and other vaccination information for all residential care staff in the WHITE database.

Objectives

- i) To quantify the percentages of staff in residential care facilities in British Columbia who self-reported vaccination or vaccine declinations as per the Influenza Prevention Policy
- ii) To quantify self-reported vaccination and vaccine declinations by job type among residential care staff
- iii) To quantify the source of influenza vaccination among residential care staff by immunizer type

Methods

The only source of data for analyses in this appendix is an anonymized individual healthcare worker level dataset from the electronic Workplace Health Indicator Tracking and Evaluation (WHITE) database of occupational health records.

Staff whose records were included in the analysis must have been employed by a health authority and have worked for a minimum of 8 hours from December 1, 2016 to February 28, 2017. Staff who were not on a health authority's payroll (contracted staff, trainees, etc.) were not included in the WHITE database. Physicians and medical residents were not included in the WHITE database for most facilities.

Staff were defined as all persons who work or train on a full time, part time or casual basis in a facility or hospital who have direct or indirect contact with patients or residents, regardless of whether they are health care providers. This includes administrative and non-patient care staff (e.g., medical records, housekeeping and dietary) and excludes volunteers. This definition of staff is unchanged from the 2013/14 season and is based on the Ministry's Performance Agreements.

Some healthcare workers (HCWs) worked at multiple facilities or in multiple positions during the influenza season. For coverage statistics at the provincial, health authority or health service delivery area level, each healthcare worker was included only in the facility and the job at which they worked the most hours.

Data on 'policy compliance status' (Table 2) originates from the self-reporting website at which staff have the option to record their vaccination or vaccine declination. The self-reporting website populates each HCW's WHITE database record. Data on HCWs' job descriptions (Table 3) is recorded in WHITE using job codes designated by Health Sector Compensation Information Systems (HSCIS). HSCIS codes are grouped into 162 subfamilies, which have been further collapsed into 8 job categories and 1 'other' category for the purposes of this report. Data on the immunizer type (Table 4) is reported by staff on the self-reporting website.

Table 1: Residential care facilities with healthcare worker immunization data in WHITE database, by health authority 2016/17

Health authority	Residential Care Facilities		
	WHITE data	Total	% in WHITE
Interior	33	87	38
Fraser	15	103	15
Vancouver Coastal	18	62	29
Vancouver Island	16	89	18
Northern	13	24	54
British Columbia	95	365	26

Table 2: Policy compliance status for staff of the 95 residential care facilities with healthcare worker immunization data in WHITE database by health authority, health service delivery area, 2016/17

Health authority	Residential care facility staff						Total
	Vaccinated	%	Declined	%	Not reported	%	
Interior	2,666	79	387	11	321	10	3,374
East Kootenay	510	81	51	8	68	11	629
Kootenay Boundary	322	72	68	15	57	13	447
Okanagan	1,196	79	201	13	120	8	1,517
Thompson/Cariboo/Shuswap	638	82	67	9	76	10	781
Fraser	2,080	80	196	8	333	13	2,609
Fraser East	521	84	31	5	68	11	620
Fraser North	628	78	80	10	99	12	807
Fraser South	931	79	85	7	166	14	1,182
Vancouver Coastal	2,280	80	164	6	390	14	2,834
Richmond	332	86	4	1	50	13	386
Vancouver	1,260	87	60	4	122	8	1,442
N Shore/Coast Garibaldi	688	68	100	10	218	22	1,006
Vancouver Island	1,562	65	43	2	781	33	2,386
South Vancouver Island	770	60	20	2	496	39	1,286
Central Vancouver Island	627	71	16	2	243	27	886
North Vancouver Island	165	77	7	3	42	20	214
Northern	982	71	128	9	271	20	1,381
Northwest	292	70	20	5	104	25	416
Northern Interior	501	77	69	11	82	13	652
Northeast	189	60	39	12	85	27	313
BC	9,570	76[†]	918	7	2,096	17	12,584

[†]This coverage percentage differs from the overall 2016/17 coverage for residential care staff (74%) due to the under-representation of residential care facilities in WHITE data. Only 95 of 365 (26%) of residential care facilities in the province have data in the WHITE database. The data presented in this appendix do not include aggregate reporting from the BCCDC Web application.

Note: For the purposes of analysis and reporting, we assume that HCWs who did not report (17% across BC) are unvaccinated; however, a proportion of these HCWs may have been immunized. Therefore, the results presented earlier in this report may underestimate vaccination coverage.

Table 3: Policy compliance status for staff of the 95 residential care facilities with healthcare worker immunization data in WHITE database by job type, 2016/17

	Residential care facility staff						Total
	Vaccinated	%	Declined	%	Not reported	%	
Health care assistant	4,986	75	470	7	1,213	18	6,669
Nurse	2,158	78	225	8	386	14	2,769
Admin and Support	1,183	73	133	8	297	18	1,613
Management or Leadership	314	86	10	3	41	11	365
Allied health [‡]	310	86	18	5	33	9	361
Business	55	67	4	5	23	28	82
Pharmacy staff	36	82	5	11	3	7	44
Laboratory worker	14	70	3	15	3	15	20
Other	25	189	1	5	1	5	27
Total	9,081	†76	869	7	2,000	17	*11,950

*Missing 634/12,584 (5%) residential care staff whose job description type was unavailable.

†This coverage percentage differs from the overall 2016/17 coverage for residential care staff (74%) due to the under-representation of residential care facilities in WHITE data. Only 95 of 365 (26%) of residential care facilities in the province have data in the WHITE database. The data presented in this appendix do not include aggregate reporting from the BCCDC Web application.

‡Allied health refers to professions in health care other than medicine and nursing (e.g. dietitians, occupational/physical/respiratory therapists, social workers etc.).

Table 4: Immunizer type for staff of the 95 residential care facilities with healthcare worker immunization data in WHITE database by health authority, 2016/17

Health Authority		IHA*	FHA	VCHA	VIHA	NHA	Total
Pharmacist	No.	1,016	588	861	280	236	2,981
	%	38	28	38	18	24	31
Peer Nurse Immunizer	No.	730	749	443	564	301	2,787
	%	27	36	19	36	31	29
Flu Clinic Nurse	No.	583	466	569	545	347	2,510
	%	22	22	25	35	35	26
Family Physician	No.	58	130	192	55	20	455
	%	2	6	8	4	2	5
Public Health	No.	164	47	60	40	53	364
	%	6	2	3	3	5	4
Other	No.	90	91	139	73	23	416
	%	3	4	6	5	2	4
Unknown	No.	25	9	16	5	2	57
	%	1	0	1	0	0	1
Total	No.	2,666	2,080	2,280	1,562	982	9,570

*Onsite clinics at Interior Health were staffed exclusively by pharmacist immunizers; therefore the 22% of HCWs reporting immunization by a flu clinic nurse should be interpreted with caution.

Summary

2016/17 is the second season in which WHITE data was analyzed to determine use of the self-reporting system, vaccination rates by job type, and immunizer type. Interpretation of these data is limited by the low participation in WHITE for residential care facilities.

The pattern of lower influenza vaccine uptake for 'Business', 'Laboratory worker' and 'Admin and Support' staff suggests that direct patient care is influential in the decision to be vaccinated.

The majority of residential care staff are immunized at work by a pharmacist, peer nurse immunizer, or flu clinic nurse. Regional variability in immunizer type may be indicative of the availability of immunizing personnel in the community as well as management decisions in how to deliver the influenza vaccine program to HCWs at the workplace.