

HIV/AIDS UPDATE

Year End 2005

British Columbia Centre for Disease Control
STI/HIV Prevention and Control

prepared by

Devon Haag, MSc, Surveillance Analyst
Paul Kim, BSc, Surveillance Analyst
Daphne Spencer, RN, HIVSS
Corrine Williams, RN, HIVSS
Elsie Wong, BSN, MBA, Federal Field Surveillance Officer
Linda Knowles, RN, BScN, Nursing Administrator
Mark Gilbert, MD, MHSc, FRCPC, Physician Epidemiologist
Michael L. Rekart, MD, DTM&H, MHSc, FRCPC, Director

TABLE OF CONTENTS

	Page
AIDS IN BRITISH COLUMBIA	1
AIDS Case Reports by:	
Table 1.1 Year of Diagnosis, 1983 to 2005	2
Graph 1.1 Year of Diagnosis, 1992 to 2005	2
Table 1.2 Age and Year of Diagnosis – Males, 1999 to 2005	3
Table 1.3 Age and Year of Diagnosis – Females, 1999 to 2005	3
Table 1.4 Age and Year of Diagnosis – Total, 1999 to 2005	4
Graph 1.2 Gender and Year of Diagnosis, 1992 to 2005	4
Graph 1.3 Age and Year of Diagnosis, 1992 to 2005	5
Graph 1.4 Risk Category and Year of Diagnosis, 1992 to 2005	5
Table 1.5 Risk Category, Gender and Year of Diagnosis, 1992 to 2005	6
Table 1.6 Ethnicity, Gender and Year of Diagnosis, 1999 to 2005	7
Table 1.7 Health Service Delivery Area and Year of Diagnosis, 1999 to 2005	8
Table 1.8 First Disease Indicative of AIDS and Year of Diagnosis, 1983 to 2005	9
HIV IN BRITISH COLUMBIA	10
Persons Testing Newly Positive for HIV by:	
Table 2.1 Year of Testing, 1985 to 2005	12
Graph 2.1 Year of Testing, 1992 to 2005	13
Graph 2.2 Gender and Year of Testing, 1992 to 2005	13
Table 2.2 Age and Year of Testing – Males, 1999 to 2005	14
Table 2.3 Age and Year of Testing – Females, 1999 to 2005	15
Table 2.4 Age and Year of Testing – Gender Unknown, 1999 to 2005	16
Graph 2.3 Age and Year of Testing, 1992 to 2005	16
Table 2.5 Age and Year of Testing – Total, 1999 to 2005	17
Table 2.6 Risk Category and Year of Testing – Males, 1999 to 2005	18
Table 2.7 Risk Category and Year of Testing – Females, 1999 to 2005	19
Table 2.8 Risk Category and Year of Testing – Gender Unknown, 1999 to 2005	20
Table 2.9 Risk Category and Year of Testing – Total, 1999 to 2005	21
Graph 2.4 Risk Category and Year of Testing, 1992 to 2005	22
Table 2.10 Prenatal Screening, 1999 to 2005	22
Table 2.11 Ethnicity and Year of Testing – Males, 1999 to 2005	23
Table 2.12 Ethnicity and Year of Testing – Females, 1999 to 2005	23
Table 2.13 Ethnicity and Year of Testing – Gender Unknown, 1999 to 2005	24
Table 2.14 Ethnicity and Year of Testing – Total, 1999 to 2005	24
Table 2.15 Health Service Delivery Area and Year of Testing, 1999 to 2005	25
Table 2.16 Specimen Source and Year of Testing, 1999 to 2005.....	26
HIV FOOTNOTES	27

AIDS IN BRITISH COLUMBIA

Historically, collection of BC AIDS data has been difficult as AIDS Case Report forms may not always be submitted when a healthcare provider diagnoses a client with AIDS.

Prior to 1997, AIDS case reports were compiled courtesy of the Vancouver Health Department.

To avoid duplicate data entry and to improve timeliness of reporting, from 1997 – 2000 STI/HIV Prevention and Control, BCCDC collaborated with the Division of HIV/AIDS Surveillance, Bureau of HIV/AIDS and STD, Laboratory Centre for Disease Control, Health Protection Branch Health Canada.

From 2000 onward, AIDS case reports have been compiled by STI/HIV Prevention and Control, BCCDC in collaboration with the BC Center for Excellence in HIV/AIDS.

Since HIV became a reportable disease in BC in 2003, all new cases are reported to STI/HIV Prevention and Control, BCCDC and followed up by Regional Health Authority Public Health staff. If an AIDS diagnosis is made at the time of the first positive HIV test, this diagnosis is reported to BCCDC.

Any potential discrepancies between reports from the semi-annual 2000 onward and previous AIDS Update reports may be attributed to the transition from the use of Health Canada's AIDS data to the use of BC AIDS data.

Detailed pre-1997 statistics are not provided in this year end report due to page limitations but are available upon request. Please forward your request to the STI/HIV Resource Centre either by:

Telephone: 604-660-2090
Fax: 604-775-0808
E-mail: stdinfo@bccdc.ca

Mail: BC Centre for Disease Control
STI/HIV Prevention and Control
655 West 12th Avenue
Vancouver, BC, V5Z 4R4

Acknowledgements:

Physicians, healthcare providers, and public health staff in British Columbia for taking the time and effort to complete and submit their AIDS case report forms.

Dr. Robert Hogg and Ms. Benita Yip from the BC Centre for Excellence in HIV/AIDS for their assistance in improving the reporting of new AIDS cases.

Table 1.1
AIDS Case Reports by YEAR OF DIAGNOSIS, 1983 to 2005

Year of Diagnosis	Cases	Rate	Cumulative Cases
1983	7	0.2	7
1984	29	1.0	36
1985	62	2.1	98
1986	106	3.5	204
1987	134	4.4	338
1988	175	5.6	513
1989	223	7.0	736
1990	224	6.8	960
1991	265	7.9	1,225
1992	322	9.3	1,547
1993	357	10.0	1,904
1994	356	9.7	2,260
1995	335	8.9	2,595
1996	268	6.9	2,863
1997	156	4.0	3,019
1998	169	4.2	3,188
1999	159	4.0	3,347
2000	151	3.7	3,498
2001	85	2.1	3,583
2002	103	2.5	3,686
2003	115	2.8	3,801
2004	97	2.3	3,898
2005	102	2.4	4,000
TOTAL:	4,000		

RATE is per 100,000 population.

Graph 1.1
AIDS Case Reports in BC by YEAR OF DIAGNOSIS, 1992 to 2005

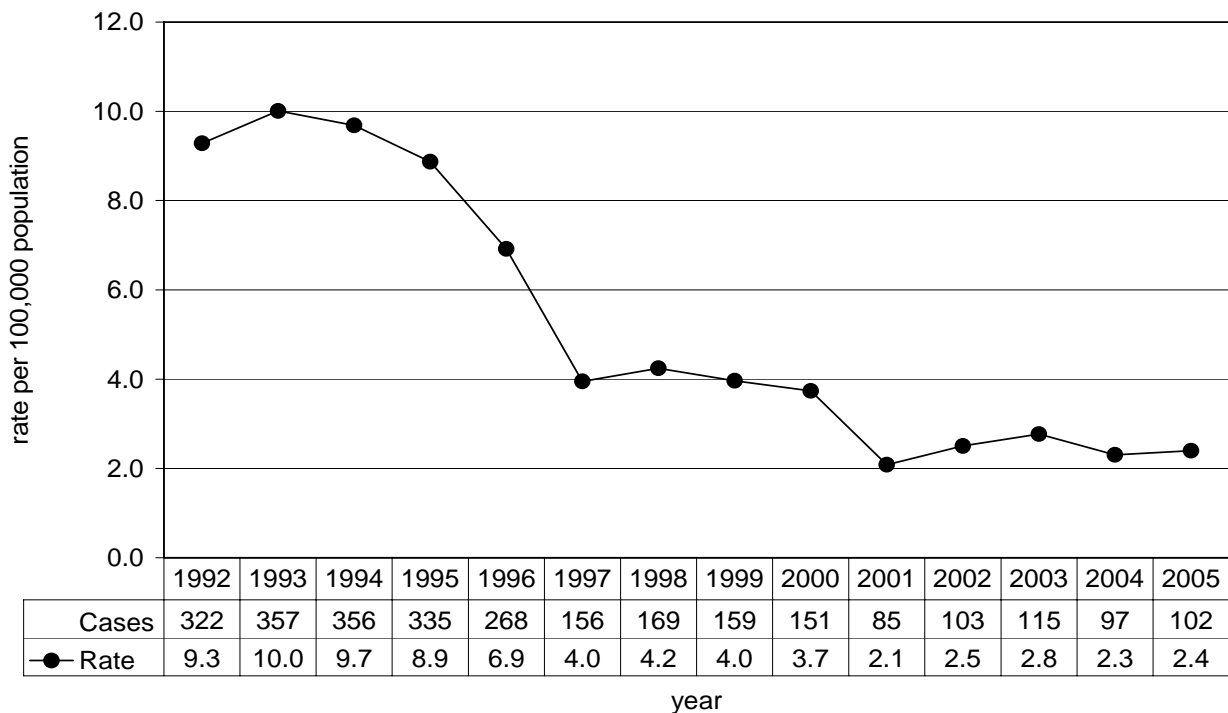


Table 1.2
AIDS Case Reports by AGE and YEAR OF DIAGNOSIS – **MALES**, 1999 to 2005

Age	AIDS	1999	2000	2001	2002	2003	2004	2005	TOTAL
<15	cases	1	1	2	-	-	-	-	14
	rate	0.3	0.3	0.5					
15 to 19	cases	-	-	-	-	-	-	-	10
	rate								
20 to 29	cases	8	9	5	4	8	5	3	447
	rate	2.9	3.3	1.8	1.5	2.8	1.7	1.0	
30 to 39	cases	57	58	24	33	40	25	17	1,604
	rate	17.3	17.8	7.5	10.5	13.0	8.3	5.7	
40 to 49	cases	42	38	21	28	24	32	37	1,128
	rate	13.0	11.6	6.3	8.3	7.0	9.2	10.6	
50+	cases	23	28	24	26	27	20	24	487
	rate	4.2	5.0	4.1	4.3	4.4	3.1	3.6	
total:	cases	131	134	76	91	99	82	81	3,690
	rate	6.6	6.7	3.8	4.5	4.8	3.9	3.8	

RATE is per 100,000 population.

TOTAL column to the far right is cumulative from 1983 to 2005 December 31.

Table 1.3
AIDS Case Reports by AGE and YEAR OF DIAGNOSIS – **FEMALES**, 1999 to 2005

Age	AIDS	1999	2000	2001	2002	2003	2004	2005	TOTAL
<15	cases	-	1	-	1	-	-	-	10
	rate		0.3		0.3				
15 to 19	cases	1	-	-	-	1	-	-	3
	rate	0.8				0.7			
20 to 29	cases	4	3	4	3	2	2	-	62
	rate	1.5	1.1	1.5	1.1	0.7	0.7		
30 to 39	cases	12	2	5	2	3	4	7	125
	rate	3.6	0.6	1.5	0.6	1.0	1.3		
40 to 49	cases	8	10	-	6	5	8	10	81
	rate	2.5	3.0		1.7	1.4	2.3		
50+	cases	2	1	-	-	5	1	4	27
	rate	0.3	0.2			0.7	0.1		
total:	cases	27	17	9	12	16	15	21	308
	rate	1.3	0.8	0.4	0.6	0.8	0.7	1.0	

RATE is per 100,000 population.

TOTAL column to the far right is cumulative from 1983 to 2005 December 31.

Table 1.4
AIDS Case Reports by AGE and YEAR OF DIAGNOSIS – **TOTAL**, 1999 to 2005

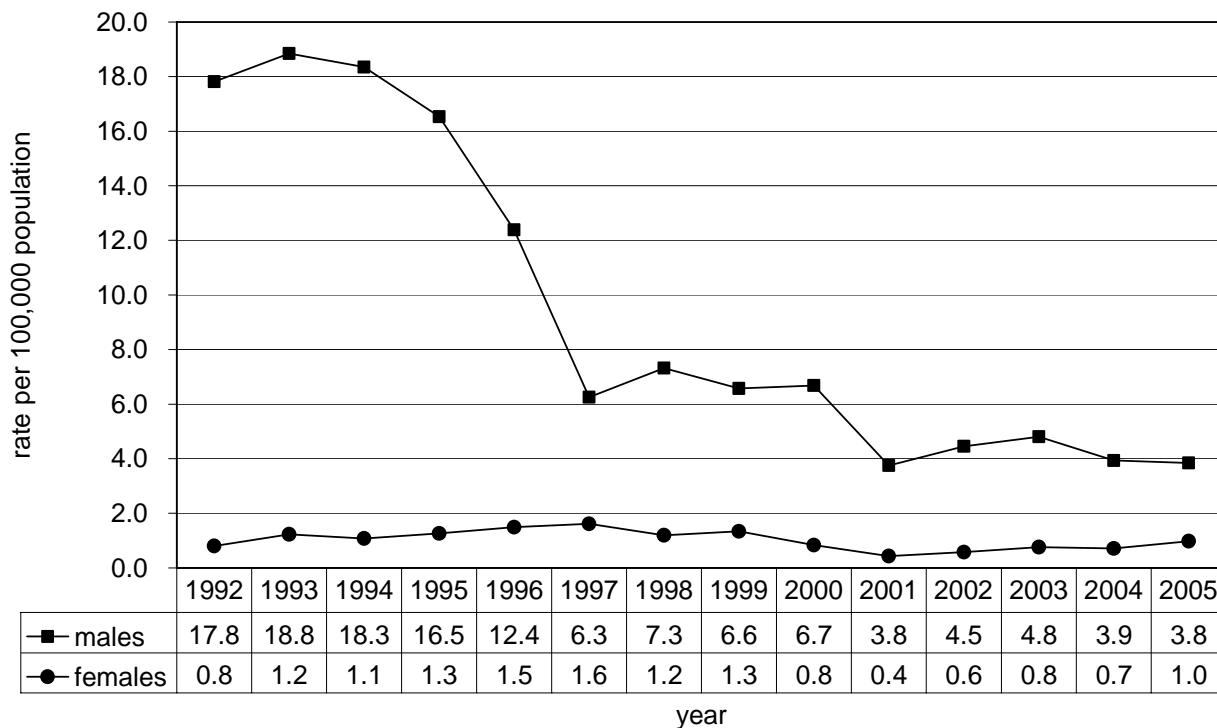
Age	AIDS	1999	2000	2001	2002	2003	2004	2005	TOTAL
<15	cases	1	2	2	1	-	-	-	24
	rate	0.13	0.27	0.28	0.14				
15 to 19	cases	1	-	-	-	1	-	-	13
	rate	0.37				0.36			
20 to 29	cases	12	12	9	7	10	7	3	509
	rate	2.20	2.23	1.67	1.29	1.81	1.23	0.52	
30 to 39	cases	70	60	29	35	43	29	24	1,731
	rate	10.62	9.22	4.50	5.53	6.94	4.76	3.97	
40 to 49	cases	50	48	21	34	29	40	47	1,209
	rate	7.70	7.27	3.13	4.99	4.19	5.70	6.65	
50+	cases	25	29	24	26	32	21	28	514
	rate	2.18	2.46	1.97	2.07	2.46	1.56	2.02	
total*:	cases	159	151	85	103	115	97	102	4,000
	rate	3.96	3.74	2.08	2.50	2.77	2.31	2.40	

total* - Includes transgendered persons.

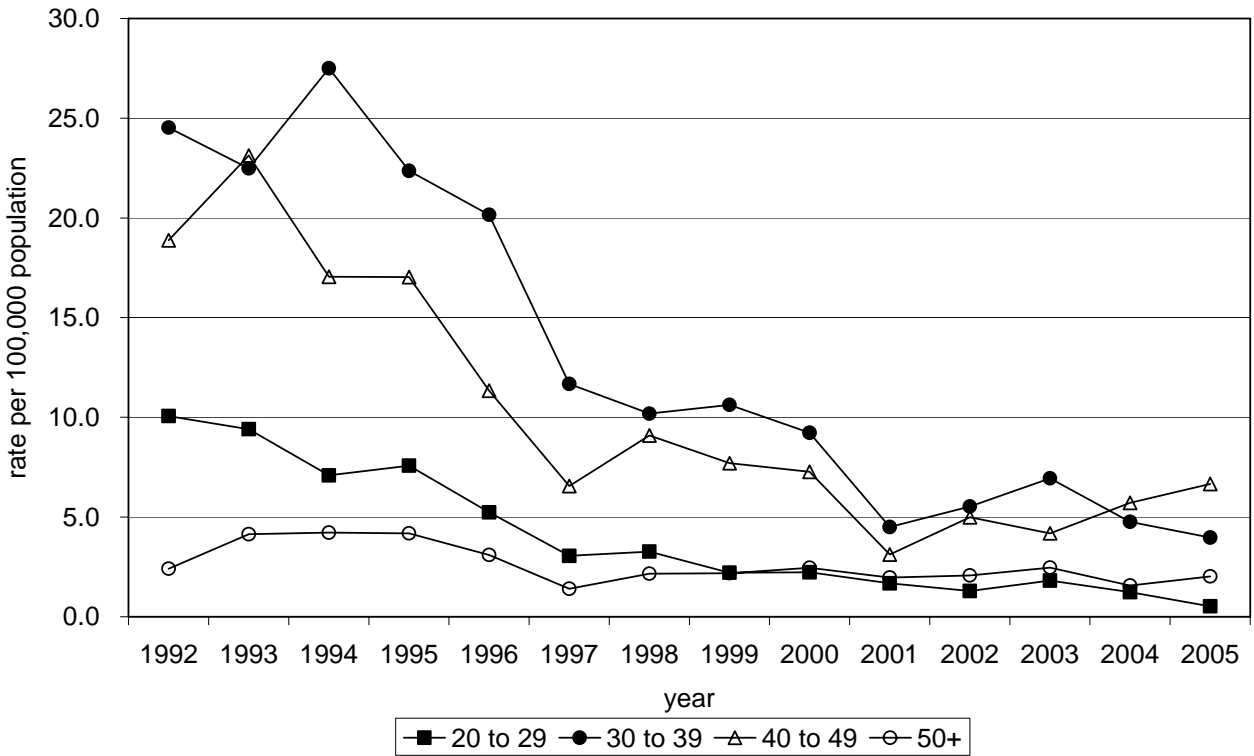
RATE is per 100,000 population.

TOTAL column to the far right is cumulative from 1983 to 2005 December 31.

Graph 1.2
AIDS Case Reports in BC by GENDER and YEAR OF DIAGNOSIS, 1992 to 2005



Graph 1.3
AIDS Case Reports in BC by AGE and YEAR OF DIAGNOSIS, 1992 to 2005



Graph 1.4
AIDS Case Reports in BC by RISK CATEGORY and YEAR OF DIAGNOSIS, 1992 to 2005

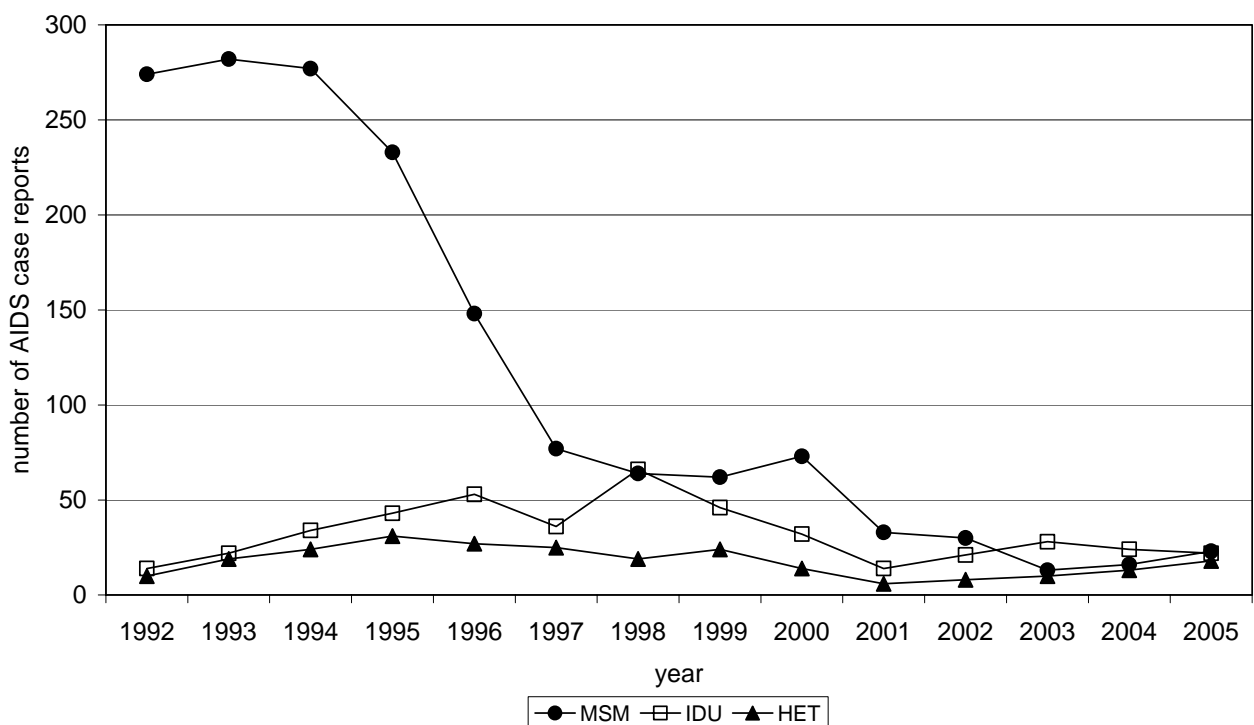


Table 1.5
AIDS Case Reports by RISK CATEGORY, GENDER and YEAR OF DIAGNOSIS, 1999 to 2005

Risk Category	AIDS	1999	2000	2001	2002	2003	2004	2005	TOTAL
MSM or WSW	males	52	68	30	27	11	14	21	2,564
	females	-	-	-	-	-	-	-	
	total	53	68	30	27	11	14	21	2,565
MSM/IDU or WSW/IDU	males	9	5	3	3	2	2	2	176
	females	-	-	-	-	-	-	-	
	total	9	5	3	3	2	2	2	177
IDU	males	34	24	11	17	23	18	12	339
	females	12	8	3	4	5	6	10	133
	total	46	32	14	21	28	24	22	472
heterosexual contact	males	14	10	3	6	5	11	14	171
	females	10	4	3	2	5	2	4	100
	total	24	14	6	8	10	13	18	271
hemophiliac	males	-	-	1	-	-	-	-	26
	females	-	-	-	-	-	-	-	1
	total	-	-	1	-	-	-	-	27
blood/BP recipient	males	-	3	1	1	-	-	-	23
	females	-	-	-	-	1	1	-	15
	total	-	3	1	1	1	1	-	38
perinatal	males	-	1	1	-	-	-	-	10
	females	-	-	-	-	-	-	-	5
	total	-	1	1	-	-	-	-	15
occupational exposure	males	-	-	-	1	-	-	-	2
	females	-	-	-	-	-	-	-	
	total	-	-	-	1	-	-	-	2
unknown	males	22	23	26	36	58	37	32	379
	females	5	5	3	6	5	6	7	54
	total	27	28	29	42	63	43	39	433
total*:	males	131	134	76	91	99	82	81	3,690
	females	27	17	9	12	16	15	21	308
	total	159	151	85	103	115	97	102	4,000

total* - Includes transgendered persons.

TOTAL column to the far right is cumulative from 1983 to 2005 December 31.

MSM – men who have sex with men

WSW – women who have sex with women

IDU – injection drug user

HET – heterosexual contact

blood/BP recipient – blood or blood product recipient

Table 1.6
AIDS Case Reports by ETHNICITY, GENDER and YEAR OF DIAGNOSIS, 1999 to 2005

Ethnicity	AIDS	1999	2000	2001	2002	2003	2004	2005	TOTAL
Caucasian	males	86	101	48	44	38	42	38	2,718
	females	10	5	3	2	5	5	7	146
	total	96	106	51	46	43	47	45	2,865
First Nations	males	13	8	5	5	8	6	6	187
	females	9	4	1	2	1	2	2	61
	total	23	12	6	7	9	8	8	249
Asian	males	4	3	-	3	3	6	4	69
	females	1	-	-	-	1	1	-	7
	total	5	3	-	3	4	7	4	76
South Asian	males	3	1	1	2	2	1	-	34
	females	-	-	-	-	-	-	-	3
	total	3	1	1	2	2	1	-	37
Inuit	males	-	-	1	1	-	-	-	6
	females	-	-	-	-	-	-	-	1
	total	-	-	1	1	-	-	-	7
Metis	males	-	1	-	-	1	1	1	11
	females	-	-	-	-	-	-	-	
	total	-	1	-	-	1	1	1	11
Black	males	4	2	-	3	4	4	3	59
	females	3	2	1	2	2	-	1	21
	total	7	4	1	5	6	4	4	80
Hispanic	males	2	2	3	5	3	-	3	53
	females	-	-	1	-	-	-	-	4
	total	2	2	4	5	3	-	3	57
Arab/West Asian	males	-	1	-	1	-	-	-	11
	females	-	-	-	-	-	-	-	
	total	-	1	-	1	-	-	-	11
other	males	-	-	-	-	2	-	-	28
	females	1	-	-	-	-	1	-	3
	total	1	-	-	-	2	1	-	31
unknown	males	19	15	18	27	38	22	26	514
	females	3	6	3	6	7	6	11	62
	total	22	21	21	33	45	28	37	576
total*:	males	131	134	76	91	99	82	81	3,690
	females	27	17	9	12	16	15	21	308
	total	159	151	85	103	115	97	102	4,000

total* - Includes transgendered persons.

TOTAL column to the far right is cumulative from 1983 to 2005 December 31.

Table 1.7
AIDS Case Reports by HEALTH SERVICE DELIVERY AREA*
and YEAR OF DIAGNOSIS, 1999 to 2005

HA	HSDA	AIDS	1999	2000	2001	2002	2003	2004	2005	TOTAL
Fraser	Fraser East	cases	-	1	1	3	1	2	4	61
		rate	-	0.4	0.4	1.2	0.4	0.8	1.5	
	Fraser North	cases	13	9	9	13	8	10	13	234
		rate	2.5	1.7	1.7	2.4	1.5	1.8	2.3	
	Fraser South	cases	13	9	4	9	6	5	7	175
		rate	2.2	1.5	0.7	1.5	1.0	0.8	1.1	
Interior	East Kootenay	cases	-	-	2	-	-	-	3	13
		rate	-	-	2.5	-	-	-	3.6	
	Kootenay Boundary	cases	-	-	-	2	1	-	-	26
		rate	-	-	-	2.5	1.2	-	-	
	Okanagan	cases	8	5	4	4	5	2	3	87
		rate	2.6	1.6	1.3	1.3	1.6	0.6	0.9	
	Thompson Cariboo Shuswap	cases	1	3	2	2	3	2	2	44
		rate	0.5	1.4	0.9	0.9	1.4	0.9	0.9	
Northern	Northeast	cases	-	-	-	-	-	1	-	7
		rate	-	-	-	-	-	1.5	-	
	Northern Interior	cases	2	1	5	1	3	3	2	40
		rate	1.3	0.7	3.3	0.7	2.0	1.9	1.3	
	Northwest	cases	2	1	-	-	1	3	-	18
		rate	2.3	1.2	-	-	1.2	3.5	-	
Vancouver Coastal	North Shore/Coast Garibaldi	cases	7	11	4	2	4	3	5	165
		rate	2.7	4.2	1.5	0.7	1.5	1.1	1.8	
	Richmond	cases	2	3	4	3	5	1	4	66
		rate	1.2	1.8	2.3	1.7	2.9	0.6	2.3	
	Vancouver	cases	86	84	35	51	54	47	48	2,596
		rate	15.2	14.7	6.0	8.8	9.2	8.0	8.1	
Vancouver Island	Central Vancouver Island	cases	2	5	3	2	3	4	-	80
		rate	0.8	2.1	1.3	0.8	1.2	1.6	-	
	North Vancouver Island	cases	1	2	-	1	3	1	-	23
		rate	0.9	1.7	-	0.9	2.6	0.9	-	
	South Vancouver Island	cases	19	10	8	8	12	12	10	323
		rate	5.6	3.0	2.4	2.3	3.5	3.5	2.8	
Unknown	Unknown	cases	3	6	3	2	6	1	1	33
Non-BC residents	Non-BC residents	cases	-	1	1	-	-	-	-	9
total:		cases	159	151	85	103	115	97	102	4,000
		rate	4.0	3.7	2.1	2.5	2.8	2.3	2.4	

HSDA* - An AIDS case report, by year of diagnosis, is designated to the appropriate HSDA according to the patient's place of residence at the time of his/her diagnosis of AIDS (i.e. first disease indicative of AIDS). The HSDA is unknown when the patient address, physician address and/or clinic address are all missing from the data.

HA – Health Authority

HSDA – Health Service Delivery Area

Rate is per 100,000 population.

TOTAL column to far right is cumulative from 1983 to 2005 December 31.

Table 1.8
AIDS Case Reports by FIRST DISEASE INDICATIVE OF AIDS and YEAR OF DIAGNOSIS,
1983 to 2005

Year of Diagnosis	KS	PCP	OI	OM	HIV WS	HIV ENC	PED	TOTAL
1983	1	3	3	-	-	-	-	7
1984	15	8	6	-	-	-	-	29
1985	15	29	12	6	-	-	-	62
1986	27	52	21	6	-	-	-	106
1987	25	76	22	8	2	1	-	134
1988	33	91	28	10	6	7	-	175
1989	52	117	37	6	6	5	-	223
1990	40	96	53	15	8	12	-	224
1991	45	120	69	7	14	10	-	265
1992	50	132	100	12	16	12	-	322
1993	46	115	132	16	33	14	1	357
1994	52	121	124	15	28	16	-	356
1995	48	105	126	5	29	21	1	335
1996	35	80	107	11	24	11	-	268
1997	15	41	66	11	13	10	-	156
1998	15	63	54	6	29	2	-	169
1999	14	62	55	5	15	8	-	159
2000	17	61	46	10	11	6	-	151
2001	7	27	28	4	14	4	1	85
2002	12	35	36	7	7	6	-	103
2003	7	39	51	4	10	4	-	115
2004	7	43	26	4	13	4	-	97
2005	14	39	29	5	11	4	-	102
total:	592	1,555	1,231	173	289	157	3	4,000

KS – Kaposi's sarcoma

PCP – Pneumocystis carinii pneumonia

OI – other opportunistic infections

OM – other malignancies

HIV WS – Wasting syndrome due to HIV

HIV ENC – Encephalopathy, HIV-related

PED – diseases affecting pediatric cases only

HIV IN BRITISH COLUMBIA

On 1 May 2003, HIV was added to the Health Act as a reportable disease in British Columbia. HIV was added to the list of reportable diseases to facilitate patient follow-up and the notification and counseling of the partners of persons who have tested positive for HIV. Partner notification and counseling is standard public health practice for sexually transmitted infections and has been shown to reach people at high risk for infection. As of 1 May 2003, regional public health nurses follow-up each new positive HIV case by contacting the health care provider who ordered the test. Public health offers assistance with confidential and, when requested, anonymous counseling of partners. Public health is also available to provide resources and additional support to newly diagnosed HIV positive persons.

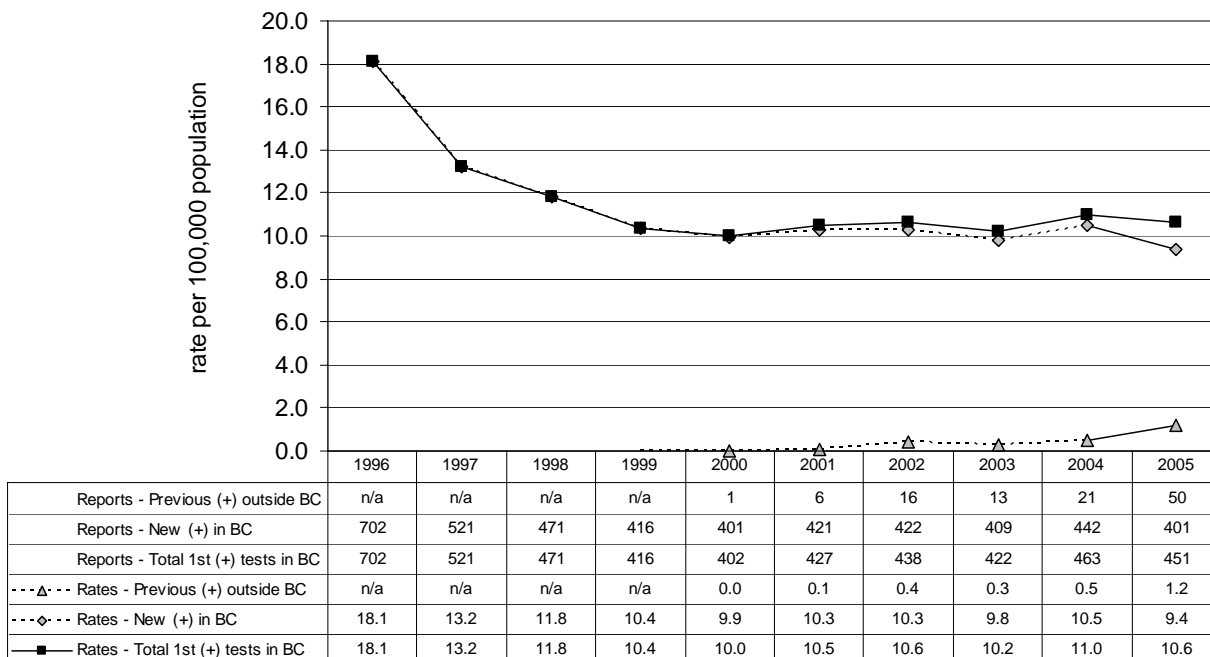
In BC, persons testing for HIV have the option to test with or without their name appearing on the test requisition. A person may test using only initials and a date of birth (i.e., non-nominal testing).

Interpretation of HIV Tables:

For HIV tests reported between 1985 and 1994, duplicates were removed by automated methods only. Since 1995, HIV test reports have been carefully examined by both automated and manual methods, further improving the detection of duplicates. In addition, in 2006-2007, BCCDC developed improved algorithms for the detection and elimination of duplicate HIV tests in surveillance data; these algorithms have been applied to all data from 1995 and onwards.

With the implementation of HIV reportability in 2003 and the development of an enhanced system of follow-up through public health HIV nurses around the province, the follow-up of reported HIV cases in BC and the collection of HIV-related history has markedly improved. Accordingly, public health authorities have been better able to distinguish between true new positive HIV tests in BC, and individuals with a first positive test in BC who have previously tested positive outside of BC. The improved identification and exclusion of these previous positive HIV cases has contributed to the observed decline in the new positive HIV rate since 2004 (see Graph 2.1), and caution is advised in interpretation of trends in reported numbers or rates of newly positive HIV infections prior to 2005.

Graph 2.1
Reported positive HIV test rates* in BC, 1996 to 2005



*Caution is advised in interpreting historic trends of New Positive Rates of HIV.

Acknowledgements:

HIVSS Team: Daphne Spencer, RN
 Corrine Williams, RN
 Paul Kim, BSc
 Devon Haag, MSc
 Linda Knowles, BScN

Michael L. Rekart, MD, DTM&H, MHSc, FRCPC
 Mark Gilbert, MD, MHSc, FRCPC
 Mel Krajden, MD, FRCP(C)
 Elsie Wong, BScN, MBA

Staff from Virology Services, Laboratory Services, BC Centre for Disease Control, and PHSA Laboratory Services for the collecting and compiling of HIV requisition data.

Designated public health nurses in the various health service delivery areas for making contact with and offering support to persons testing positive for HIV.

Division of HIV/AIDS Surveillance, Bureau of HIV/AIDS and STD, Laboratory Centre for Disease Control, Health Protection Branch, Health Canada, for their financial contribution to the initial phases of this HIVSS project.

Table 2.1
Persons Testing Newly Positive for HIV by YEAR OF TESTING, 1985 to 2005

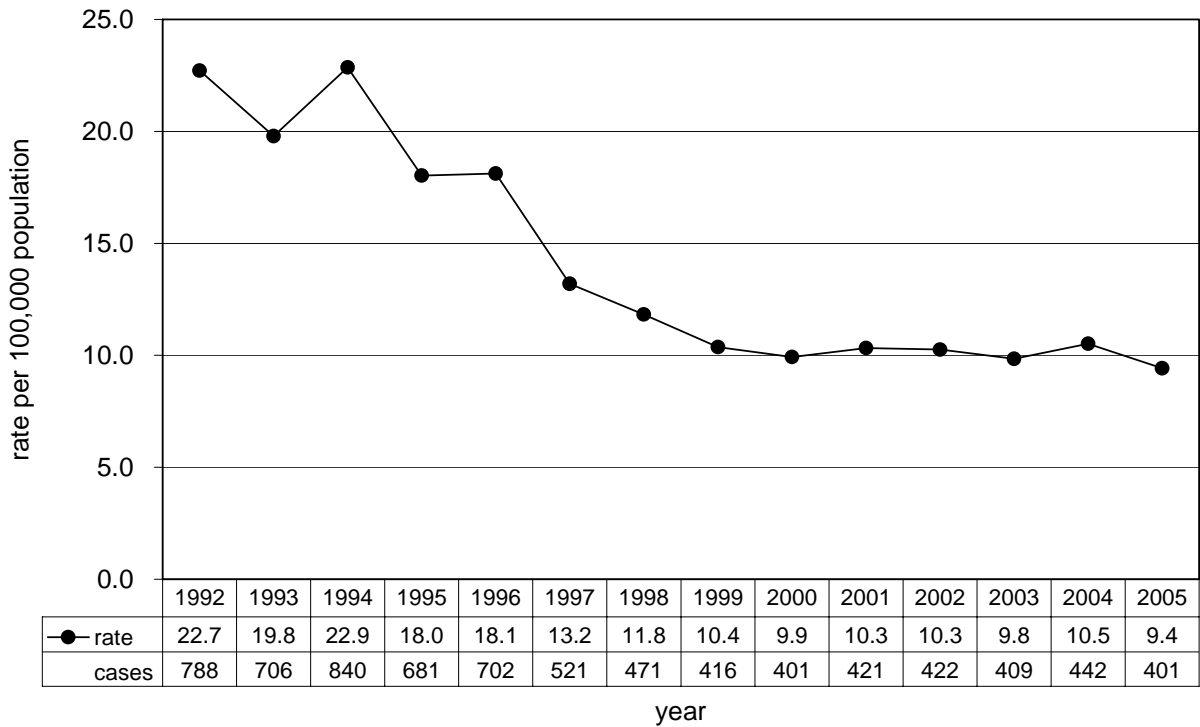
Year	Persons	Rate	Tests
1985	220	7.4	1,362
1986	670	22.3	5,328
1987	929	30.5	35,783
1988	746	23.9	28,866
1989	726	22.7	30,304
1990	645	19.6	38,025
1991	704	20.9	54,353
1992	788	22.7	84,405
1993	706	19.8	92,830
1994	840	22.9	104,476
1995	681	18.0	130,303
1996	702	18.1	138,267
1997	521	13.2	140,234
1998	471	11.8	137,692
1999	416	10.4	135,283
2000	401	9.9	135,488
2001	421	10.3	135,805
2002	422	10.3	146,491
2003	409	9.8	143,339
2004	442	10.5	154,203
2005	401	9.4	160,876
TOTAL:	11,860	-	1,872,837

TESTS is the number of HIV tests performed, positive and negative, at the BCCDC and PHSA Laboratory Services.

RATE is per 100,000 population.

1985 annual total is for the months of October, November and December only.

Graph 2.2
Persons Testing Newly Positive for HIV in BC by YEAR OF TESTING, 1992 to 2005



Graph 2.3
Persons Testing Newly Positive for HIV in BC by GENDER and YEAR OF TESTING, 1992 to 2005

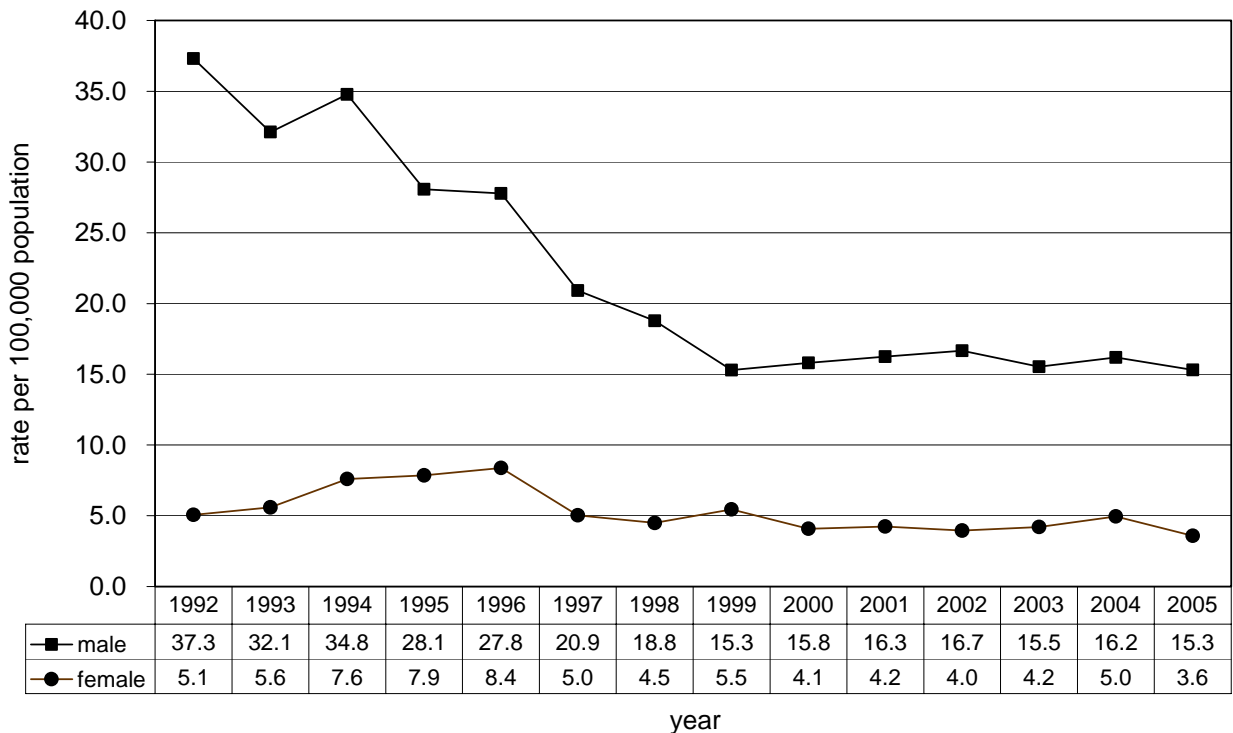


Table 2.2
Persons Testing Newly Positive for HIV by AGE and YEAR OF TESTING – MALES,
1999 to 2005

Age	HIV	1999	2000	2001	2002	2003	2004	2005	TOTAL
<18 mos	persons	-	-	1	-	-	-	-	11
	rate			3.2					
18 mos to 14 yrs	persons	1	1	1	-	1	-	-	32
	rate	0.3	0.3	0.3		0.3			
< 15 yrs	tests	617	613	600	626	592	570	575	10,064
15 to 19	persons	2	3	2	1	2	2	2	85
	rate	1.4	2.1	1.4	0.7	1.4	1.4	1.4	
	tests	2,826	2,678	2,634	2,865	2,697	2,762	2,918	39,369
20 to 29	persons	54	60	61	47	44	49	41	2,460
	rate	19.6	22.0	22.4	17.1	15.7	17.0	13.9	
	tests	15,812	15,342	14,937	16,424	16,014	16,937	18,686	247,940
30 to 39	persons	133	118	115	124	105	99	110	4,091
	rate	40.3	36.3	35.8	39.4	34.1	32.7	36.6	
	tests	14,907	14,914	14,668	15,640	14,376	15,050	15,790	233,286
40 to 49	persons	71	85	100	106	99	122	107	2,281
	rate	22.0	25.9	30.1	31.4	28.9	35.1	30.6	
	tests	9,831	10,016	10,611	11,009	10,725	11,762	12,109	147,844
50+	persons	43	49	47	61	69	65	63	979
	rate	7.9	8.7	8.1	10.2	11.1	10.1	9.5	
	tests	6,578	7,196	7,466	8,485	8,274	9,721	10,073	104,493
unknown	persons	1	1	2	1	-	-	-	262
	tests	233	294	232	209	157	123	135	13,417
total:	persons	305	317	329	340	320	337	323	10,201
	rate	15.3	15.8	16.3	16.7	15.5	16.2	15.3	
	tests	50,804	51,053	51,148	55,258	52,835	56,925	60,286	796,413

TESTS is number of HIV tests performed, both positive and negative, at the BCCDC and PHSA Laboratory Services.

RATE is per 100,000 population.

TOTAL column to far right is cumulative from 1985 to 2005 December 31.

Table 2.3
Persons Testing Newly Positive for HIV by AGE and YEAR OF TESTING – FEMALES,
1999 to 2005

Age	HIV	1999	2000	2001	2002	2003	2004	2005	TOTAL
< 18 mos	persons	-	-	-	-	-	-	-	6
	rate								
18 mos to 14 yrs	persons	-	-	1	1	-	4	1	15
	rate			0.3	0.3		1.3	0.3	
< 15 yrs	tests	981	908	841	857	794	870	769	13,337
15 to 19	persons	3	4	8	4	2	3	3	71
	rate	2.3	3.0	5.9	2.9	1.5	2.2	2.2	
	tests	7,836	7,636	7,170	7,202	6,817	6,835	6,689	102,350
20 to 29	persons	35	26	35	22	26	29	18	553
	rate	13.0	9.8	13.2	8.2	9.5	10.4	6.3	
	tests	32,804	32,164	32,011	34,024	33,480	35,824	38,025	459,639
30 to 39	persons	36	24	28	36	33	38	19	637
	rate	10.9	7.4	8.7	11.3	10.6	12.4	6.2	
	tests	27,015	27,505	27,694	29,691	29,721	31,619	32,789	380,290
40 to 49	persons	26	25	14	16	19	26	25	292
	rate	8.0	7.5	4.1	4.6	5.4	7.3	7.0	
	tests	8,812	9,148	9,129	9,864	9,622	10,437	10,759	127,783
50+	persons	10	4	1	3	8	5	11	75
	rate	1.7	0.6	0.2	0.5	1.2	0.7	1.5	
	tests	4,238	4,589	4,660	5,574	5,363	5,869	6,551	67,245
unknown	persons	-	-	-	-	-	-	-	36
	tests	369	343	356	286	600	1,328	249	17,354
total:	persons	110	83	87	82	88	105	77	1,685
	rate	5.5	4.1	4.2	4.0	4.2	5.0	3.6	
	tests	82,055	82,293	81,861	87,498	86,397	92,782	95,831	1,167,998

TESTS is number of HIV tests performed, both positive and negative, at the BCCDC and PHSA Laboratory Services.

RATE is per 100,000 population.

TOTAL column to far right is cumulative from 1985 to 2005 December 31.

Table 2.4
Persons Testing Newly Positive for HIV by AGE and YEAR OF TESTING – GENDER UNKNOWN, 1999 to 2005

Age	HIV	1999	2000	2001	2002	2003	2004	2005	TOTAL
< 18 mos	persons	-	-	-	-	-	-	-	1
18 mos to 14 yrs	persons	-	-	-	-	-	-	-	3
< 15 yrs	tests	25	36	44	59	52	69	64	854
15 to 19	persons	-	-	-	-	-	-	-	7
	tests	169	154	205	242	284	307	341	3,951
20 to 29	persons	-	-	1	-	-	-	-	72
	tests	572	546	750	891	1,014	1,105	1,251	18,477
30 to 39	persons	-	-	2	-	-	-	-	113
	tests	444	446	606	668	801	848	784	14,670
40 to 49	persons	-	-	-	-	-	-	-	59
	tests	205	244	334	407	536	603	584	7,291
50+	persons	-	-	1	-	-	-	-	22
	tests	162	234	319	502	682	799	773	6,723
unknown	persons	1	-	1	-	1	-	-	96
	tests	847	482	538	966	738	765	962	17,312
total:	persons	1	-	5	-	1	-	-	373
	tests	2,424	2,142	2,796	3,735	4,107	4,496	4,759	69,278

TESTS is number of HIV tests performed, both positive and negative, at the BCCDC and PHSA Laboratory Services.
RATE is per 100,000 population.
TOTAL column to far right is cumulative from 1985 to 2005 December 31.

Graph 2.4
Persons testing newly positive for HIV in BC by AGE and YEAR OF TESTING, 1992 to 2005

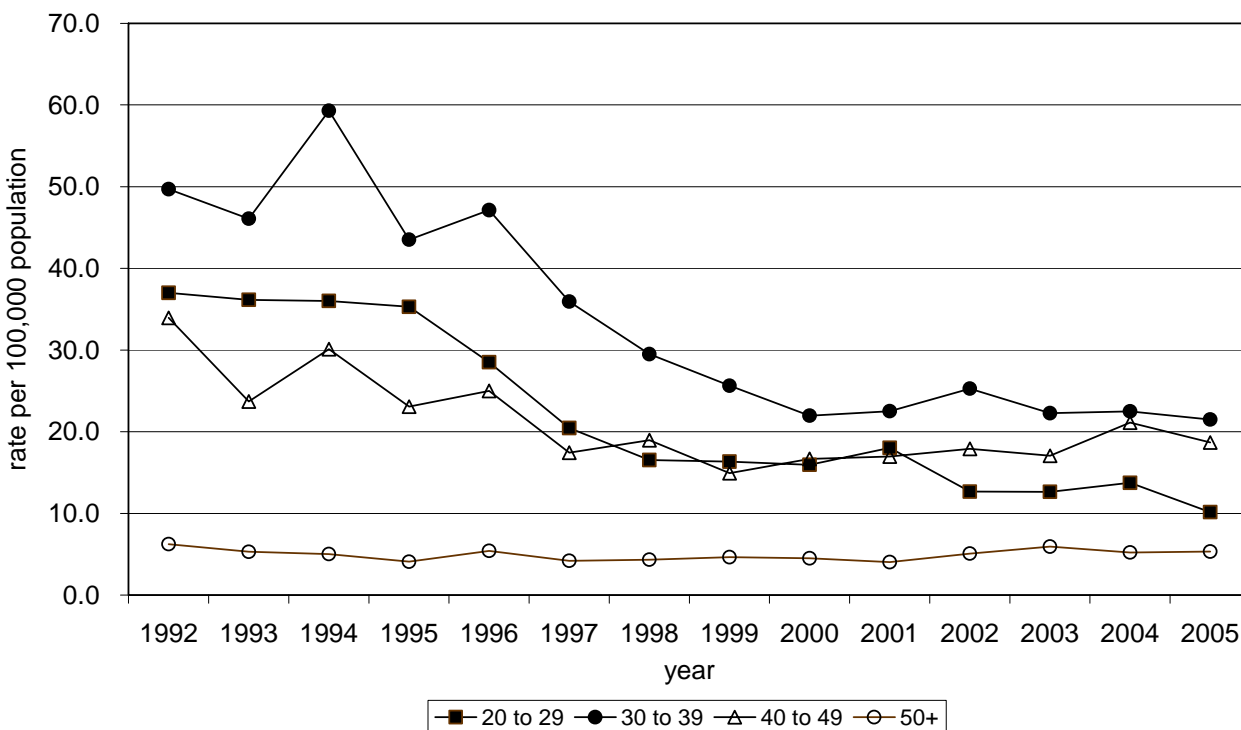


Table 2.5
Persons Testing Newly Positive for HIV by AGE and YEAR OF TESTING – TOTAL,
1999 to 2005

Age	HIV	1999	2000	2001	2002	2003	2004	2005	TOTAL
<15 yrs	persons	1	1	3	1	1	4	1	68
	rate	0.1	0.1	0.4	0.1	0.1	0.6		
	tests	1,623	1,557	1,485	1,542	1,438	1,509	1,408	24,255
15 to 19	persons	5	7	10	5	4	5	5	163
	rate	1.9	2.5	3.6	1.8	1.4	1.8	1.8	
	tests	10,831	10,468	10,009	10,309	9,798	9,904	9,948	145,670
20 to 29	persons	89	86	97	69	70	78	59	3,085
	rate	16.3	16.0	18.0	12.7	12.6	13.7	10.2	
	tests	49,188	48,052	47,698	51,339	50,508	53,866	57,962	726,056
30 to 39	persons	169	143	145	160	138	137	130	4,843
	rate	25.6	22.0	22.5	25.3	22.3	22.5	21.5	
	tests	42,366	42,865	42,968	45,999	44,898	47,517	49,363	628,246
40 to 49	persons	97	110	114	122	118	148	132	2,632
	rate	14.9	16.7	17.0	17.9	17.0	21.1	18.7	
	tests	18,848	19,408	20,074	21,280	20,883	22,802	23,452	282,918
50+	persons	53	53	49	64	77	70	74	1,076
	rate	4.6	4.5	4.0	5.1	5.9	5.2	5.3	
	tests	10,978	12,019	12,445	14,561	14,319	16,389	17,397	178,461
unknown	persons	2	1	3	1	1	-	-	394
	tests	1,449	1,119	1,126	1,461	1,495	2,216	1,346	48,083
total*:	persons	416	401	421	422	409	442	401	12,261
	rate	10.4	9.9	10.3	10.3	9.8	10.5	9.4	
	tests	135,283	135,488	135,805	146,491	143,339	154,203	160,876	2,033,689

total* - Includes transgendered persons.

TESTS is number of HIV tests performed, both positive and negative, at the BCCDC and PHSA Laboratory Services.

RATE is per 100,000 population.

TOTAL column to far right is cumulative from 1985 to 2005 December 31.

Table 2.6
Persons Testing Newly Positive for HIV by RISK CATEGORY and YEAR OF TESTING – **MALES**,
1999 to 2005

Risk Category	1999	2000	2001	2002	2003	2004	2005	TOTAL
MSM	95	131	128	144	145	168	168	5,332
MSM/IDU	10	10	17	12	14	18	11	277
IDU	86	89	89	102	84	84	73	1,751
heterosexual contact	72	38	58	65	65	52	55	808
sex trade worker (STW)	-	-	-	-	-	-	1	16
STW/IDU	1	1	-	-	-	1	-	23
hemophiliac	-	1	-	-	-	-	-	64
blood/BP recipient (1)	2	4	2	5	4	4	3	81
occupational EXP (2)	-	-	1	1	-	-	-	3
other (3)	-	8	4	3	4	3	3	71
perinatal (4)	1	-	1	-	-	-	-	17
no identified risk	-	-	-	-	1	2	-	3
unknown	38	35	29	8	3	5	9	1,755
total:	305	317	329	340	320	337	323	10,201

TOTAL column to far right is cumulative from 1985 to 2005 December 31.

For 2005, not all risk and ethnicity data was available at the time of this publication and thus these HIV cases were noted as "unknown" in the appropriate tables. As this risk and ethnicity data becomes available it will be published in future reports.

Since 2002, risk and ethnicity data are no longer captured on the HIV requisition form. For this reason, the number of HIV tests performed is no longer published in the HIV tables associated with risk and ethnicity.

MSM – men who have sex with men (includes males who self-identify as bisexual)

IDU – injection drug user

HET – heterosexual contact

blood/BP recipient – blood or blood product recipient

occupational EXP – occupational exposure

(1), (2), (3), and (4) – refer to HIV FOOTNOTES on page 27.

Table 2.7
Persons Testing Newly Positive for HIV by RISK CATEGORY and YEAR OF TESTING –
FEMALES, 1999 to 2005

Risk Category	1999	2000	2001	2002	2003	2004	2005	TOTAL
WSW	1	-	1	-	1	-	-	16
IDU	41	25	27	38	21	21	22	532
heterosexual contact	35	28	43	25	33	42	24	457
sex trade worker (STW)	2	1	-	-	1	2	2	17
STW/IDU	14	19	12	15	25	32	21	296
hemophiliac	-	-	-	-	-	-	-	1
blood/BP recipient (1)	1	1	-	-	5	2	2	46
occupational EXP (2)	-	-	-	-	-	-	-	-
other (3)	3	3	-	1	-	-	2	23
perinatal (4)	-	-	1	1	-	4	1	17
no identified risk	-	-	-	-	-	-	-	-
unknown	13	6	3	2	2	2	3	280
total:	110	83	87	82	88	105	77	1,685

TOTAL column to far right is cumulative from 1985 to 2005 December 31.

For 2005, not all risk and ethnicity data was available at the time of this publication and thus these HIV cases were noted as "unknown" in the appropriate tables. As this risk and ethnicity data becomes available it will be published in future reports.

Since 2002, risk and ethnicity data are no longer captured on the HIV requisition form. For this reason, the number of HIV tests performed is no longer published in the HIV tables associated with risk and ethnicity.

WSW – women who have sex with women
 IDU – injection drug user (includes WSW/IDU)
 HET – heterosexual contact
 blood/BP recipient – blood or blood product recipient
 occupational EXP – occupational exposure

(1), (2), (3), and (4) – refer to HIV FOOTNOTES on page 27.

Table 2.8
Persons Testing Newly Positive for HIV by RISK CATEGORY and YEAR OF TESTING – **GENDER UNKNOWN**, 1999 to 2005

Risk Category	1999	2000	2001	2002	2003	2004	2005	TOTAL
MSM or WSW	-	-	-	-	-	-	-	97
MSM/IDU	-	-	-	-	-	-	-	2
IDU	1	-	2	-	1	-	-	36
heterosexual contact	-	-	-	-	-	-	-	15
sex trade worker (STW)	-	-	-	-	-	-	-	1
STW/IDU	-	-	-	-	-	-	-	3
hemophiliac	-	-	-	-	-	-	-	3
blood/BP recipient (1)	-	-	-	-	-	-	-	2
occupational EXP (2)	-	-	-	-	-	-	-	-
other (3)	-	-	-	-	-	-	-	3
perinatal (4)	-	-	-	-	-	-	-	2
no identified risk	-	-	-	-	-	-	-	-
unknown	-	-	3	-	-	-	-	209
total:	1	-	5	-	1	-	-	373

TOTAL column to far right is cumulative from 1985 to 2005 December 31.

For 2005, not all risk and ethnicity data was available at the time of this publication and thus these HIV cases were noted as "unknown" in the appropriate tables. As this risk and ethnicity data becomes available it will be published in future reports.

Since 2002, risk and ethnicity data are no longer captured on the HIV requisition form. For this reason, the number of HIV tests performed is no longer published in the HIV tables associated with risk and ethnicity.

MSM – men who have sex with men (includes males who self-identify as bisexual)

WSW – women who have sex with women

IDU – injection drug user (includes WSW/IDU)

HET – heterosexual contact

blood/BP recipient – blood/blood product recipient

occupational EXP – occupational exposure

(1), (2), (3), and (4) – refer to HIV FOOTNOTES on page 27.

Table 2.9
Persons Testing Newly Positive for HIV by RISK CATEGORY and YEAR OF TESTING – **TOTAL**,
1999 to 2005

Risk Category	1999	2000	2001	2002	2003	2004	2005	TOTAL
MSM or WSW	96	132	129	144	146	168	168	5,446
MSM/IDU	10	10	17	12	14	18	12	282
IDU	128	114	118	140	106	105	95	2,317
heterosexual contact	107	66	101	90	98	94	79	1,280
sex trade worker (STW)	2	1	-	-	1	2	3	34
STW/IDU	15	20	12	15	25	33	21	322
hemophiliac	-	1	-	-	-	-	-	68
blood/BP recipient (1)	3	5	2	5	9	6	5	129
occupational EXP (2)	-	-	1	1	-	-	-	3
other (3)	3	11	4	4	4	3	5	97
perinatal (4)	1	-	2	1	-	4	1	36
no identified risk	-	-	-	-	1	2	-	3
unknown	51	41	35	10	5	7	12	2,244
total*:	416	401	421	422	409	442	401	12,261

total* - Includes transgendered persons.

TOTAL column to far right is cumulative from 1985 to 2005 December 31.

For 2005, not all risk and ethnicity data was available at the time of this publication and thus these HIV cases were noted as "unknown" in the appropriate tables. As this risk and ethnicity data becomes available it will be published in future reports.

Since 2002, risk and ethnicity data are no longer captured on the HIV requisition form. For this reason, the number of HIV tests performed is no longer published in the HIV tables associated with risk and ethnicity.

MSM – men who have sex with men (includes males who self-identify as bisexual)

WSW – women who have sex with women

IDU – injection drug user (includes WSW/IDU)

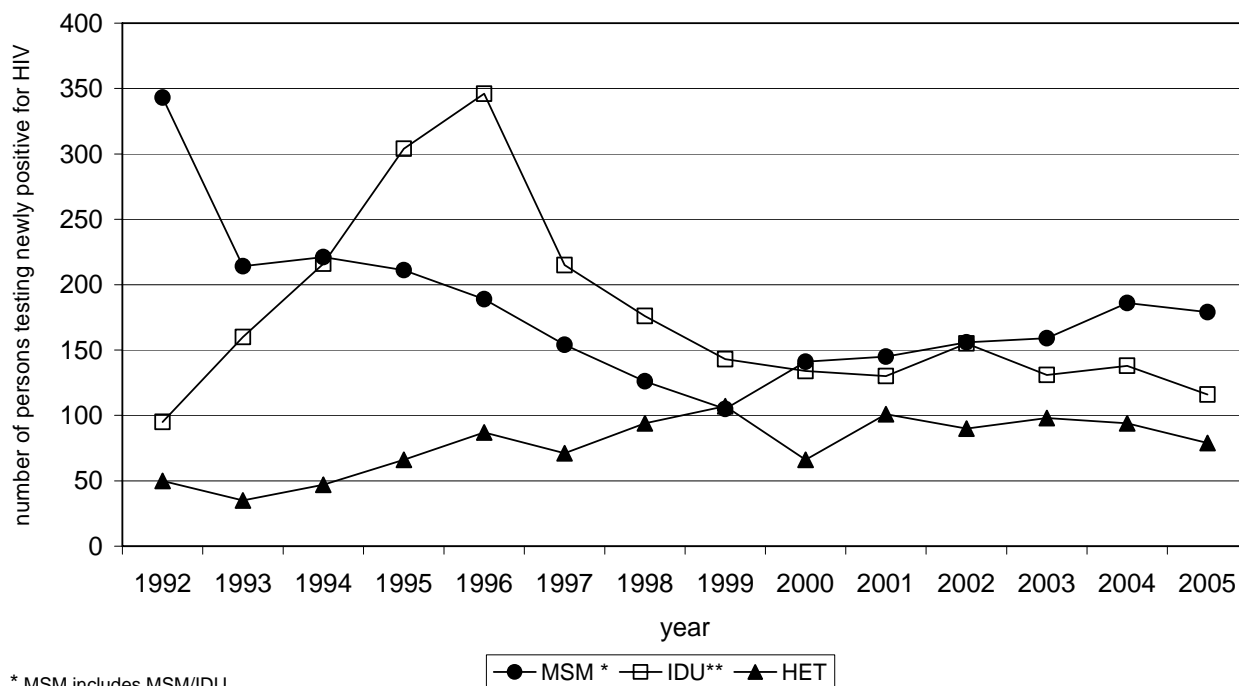
HET – heterosexual contact

blood/BP recipient – blood/blood product recipient

occupational EXP – occupational exposure

(1), (2), (3), and (4) – refer to HIV FOOTNOTES on page 27.

Graph 2.5
Persons Testing Newly Positive for HIV in BC by MAJOR RISK CATEGORY and YEAR OF TESTING, 1992 to 2005



* MSM includes MSM/IDU

** IDU includes STW/IDU and WSW/IDU

Prenatal Screening:

Since pregnancy is not an HIV risk category, a separate table (Table 2.10) has been prepared to monitor the number of pregnant women whose HIV test requisition stated that the test was being done as a prenatal assessment and of these women, the number who have tested positive for HIV. This does not include pregnant women tested for HIV whose requisition indicated a different risk or reason for testing. Please note that the pregnant women who have tested positive for HIV are included in the appropriate *Risk Category* table in accordance with their identified risk (e.g. heterosexual contact). Males who test for HIV under the Prenatal Screening reason for testing, and who are partners of pregnant women who test for HIV, are also included in this table.

Table 2.10
Persons Testing Newly Positive for HIV – **PRENATAL SCREENING**, 1999 to 2005

Gender	HIV	1999	2000	2001	2002	2003	2004	2005	TOTAL
male	persons	-	-	2	-	-	-	-	6
	tests	624	755	188	149	211	97	95	3,612
female	persons	-	4	20	8	7	9	5	84
	tests	26,240	25,810	25,901	24,812	27,676	38,674	39,826	301,402
unknown	persons	-	-	-	-	-	-	-	-
	tests	387	340	467	475	509	515	606	6,393
total:	persons	-	4	22	8	7	9	5	90
	tests	27,251	26,905	26,556	25,436	28,396	39,286	40,527	311,407

TESTS is the number of HIV tests performed as part of prenatal screening, both positive and negative, at the BCCDC and PHSA Laboratory Services.
TOTAL column to far right is cumulative from 1994 to 2005 December 31.

Table 2.11
Persons Testing Newly Positive for HIV by ETHNICITY and YEAR OF TESTING – **MALES**,
1999 to 2005

Ethnicity	1999	2000	2001	2002	2003	2004	2005	TOTAL
Caucasian	200	209	231	228	214	240	223	2,674
First Nations	30	35	32	35	32	30	27	425
Asian	12	17	12	16	12	12	18	152
South Asian	6	4	13	21	14	8	12	119
Inuit	1	1	-	1	1	-	-	4
Metis	3	1	3	3	5	6	3	33
Black	11	10	10	10	15	9	12	120
Hispanic	11	8	9	19	11	11	16	140
Arab/West Asian	2	-	2	2	-	2	-	11
Other/Mixed Race	-	2	-	1	1	3	-	7
Unknown	29	30	17	4	15	16	12	433
total:	305	317	329	340	320	337	323	4,118

Table 2.12
Persons Testing Newly Positive for HIV by ETHNICITY and YEAR OF TESTING – **FEMALES**,
1999 to 2005

Ethnicity	1999	2000	2001	2002	2003	2004	2005	TOTAL
Caucasian	47	42	40	41	42	52	38	540
First Nations	40	21	31	25	25	29	25	339
Asian	1	2	-	3	2	2	1	16
South Asian	1	1	1	2	2	3	2	23
Inuit	-	1	-	-	-	-	-	1
Metis	2	-	-	1	3	4	2	18
Black	8	8	13	5	9	10	5	80
Hispanic	1	-	1	2	2	-	-	12
Arab/West Asian	1	-	-	1	-	-	1	3
Other/Mixed Race	-	1	-	-	-	1	1	3
Unknown	9	7	1	2	3	4	2	99
total:	110	83	87	82	88	105	77	1,134

TOTAL column on far right is cumulative from 1995 to 2005 December 31.

For 2005, not all risk and ethnicity data was available at the time of this publication and thus these HIV cases were noted as "unknown" in the appropriate tables. As this risk and ethnicity data becomes available it will be published in future reports.

Since 2002, risk and ethnicity data are no longer captured on the HIV requisition form. For this reason, the number of HIV tests performed is no longer published in the HIV tables associated with risk and ethnicity.

Table 2.13
Persons Testing Newly Positive for HIV by ETHNICITY and YEAR OF TESTING – **GENDER UNKNOWN**, 1999 to 2005

Ethnicity	1999	2000	2001	2002	2003	2004	2005	TOTAL
Caucasian	-	-	3	-	-	-	-	12
First Nations	1	-	-	-	-	-	-	5
Asian	-	-	-	-	-	-	-	-
South Asian	-	-	-	-	-	-	-	1
Inuit	-	-	-	-	-	-	-	-
Metis	-	-	-	-	-	-	-	-
Black	-	-	-	-	-	-	-	1
Hispanic	-	-	-	-	-	-	-	1
Arab/West Asian	-	-	-	-	-	-	-	-
Other/Mixed Race	-	-	-	-	-	-	-	-
Unknown	-	-	2	-	1	-	-	13
total:	1	-	5	-	1	-	-	33

Table 2.14
Persons Testing Newly Positive for HIV by ETHNICITY and YEAR OF TESTING – **TOTAL**, 1999 to 2005

Ethnicity	1999	2000	2001	2002	2003	2004	2005	TOTAL
Caucasian	247	252	274	269	256	292	261	3,227
First Nations	71	56	63	60	57	59	53	770
Asian	13	19	12	19	14	14	19	168
South Asian	7	5	14	23	16	11	14	143
Inuit	1	2	-	1	1	-	-	5
Metis	5	1	3	4	8	10	5	51
Black	19	18	23	15	24	19	17	201
Hispanic	12	8	10	21	13	11	16	153
Arab/West Asian	3	-	2	3	-	2	1	14
other	-	3	-	1	1	4	1	10
unknown	38	37	20	6	19	20	14	545
total*:	416	401	421	422	409	442	401	5,287

total* - Includes transgendered persons.

TOTAL column on far right is cumulative from 1995 to 2005 December 31.

For 2005, not all risk and ethnicity data was available at the time of this publication and thus these HIV cases were noted as "unknown" in the appropriate tables. As this risk and ethnicity data becomes available it will be published in future reports.

Since 2002, risk and ethnicity data are no longer captured on the HIV requisition form. For this reason, the number of HIV tests performed is no longer published in the HIV tables associated with risk and ethnicity.

Table 2.15
Persons Testing Newly Positive for HIV by HEALTH SERVICE DELIVERY AREA*
and YEAR OF TESTING, 1999 to 2005

HA	HSDA	HIV	1999	2000	2001	2002	2003	2004	2005	TOTAL
Fraser	Fraser East	persons	12	22	14	11	6	19	15	166
		rate	5.0	9.0	5.6	4.4	2.4	7.3	5.7	
	Fraser North	persons	43	52	42	50	53	55	40	541
		rate	8.3	9.8	7.8	9.2	9.6	9.9	7.1	
	Fraser South	persons	30	21	33	39	37	35	34	405
		rate	5.2	3.6	5.5	6.4	6.0	5.6	5.3	
Interior	East Kootenay	persons	3	1	-	1	1	1	1	17
		rate	3.8	1.3		1.3	1.2	1.2	1.2	
	Kootenay Boundary	persons	1	1	5	-	2	-	5	30
		rate	1.2	1.2	6.2		2.5		6.2	
	Okanagan	persons	6	17	12	7	13	12	10	130
		rate	2.0	5.5	3.9	2.2	4.1	3.7	3.0	
	Thompson Cariboo Shuswap	persons	9	8	13	6	12	6	4	117
		rate	4.2	3.7	6.1	2.8	5.5	2.7	1.8	
Northern	Northeast	persons	-	4	-	1	1	4	1	13
		rate		6.3		1.6	1.5	5.9	1.4	
	Northern Interior	persons	7	2	8	10	17	14	22	100
		rate	4.6	1.3	5.3	6.7	11.2	9.1	14.3	
	Northwest	persons	2	1	1	-	3	8	5	30
		rate	2.3	1.2	1.2		3.6	9.4	5.9	
Vancouver Coastal	North Shore/Coast Garibaldi	persons	12	13	12	10	12	12	11	168
		rate	4.6	4.9	4.5	3.7	4.4	4.4	4.0	
	Richmond	persons	12	2	5	12	6	8	7	72
		rate	7.2	1.2	2.9	7.0	3.5	4.6	4.0	
	Vancouver	persons	226	216	226	223	198	193	194	2,833
		rate	40.0	37.8	39.0	38.3	33.8	32.7	32.7	
Vancouver Island	Central Vancouver Island	persons	17	12	10	10	8	19	12	144
		rate	7.1	5.0	4.2	4.1	3.3	7.7	4.7	
	North Vancouver Island	persons	2	2	4	6	4	6	2	47
		rate	1.7	1.7	3.5	5.2	3.5	5.1	1.7	
	South Vancouver Island	persons	33	26	35	36	36	46	32	383
		rate	9.8	7.7	10.3	10.5	10.4	13.2	9.1	
unknown	unknown	persons	1	1	-	-	-	-	-	80
non-BC	non-BC	persons	-	-	1	-	-	4	6	11
Total	Total	persons	416	401	421	422	409	442	401	5,287
		rate	10.4	9.9	10.3	10.3	9.8	10.5	9.4	

*HEALTH SERVICE DELIVERY AREA- A person testing newly positive for HIV is designated to the appropriate HSDA according to the person's city of residence. If the person's city of residence is not available then the person is designated to the city of the clinic or physician where the person was tested.

HA – Health Authority
HSDA – Health Service Delivery Area

RATE is per 100,000 population.
TOTAL column to far right is cumulative from 1995 to 2005 December 31.

Table 2.16
Persons Testing Newly Positive for HIV by SPECIMEN SOURCE and YEAR OF TESTING,
1999 to 2005

Specimen Source	HIV	1999	2000	2001	2002	2003	2004	2005	TOTAL
Private Physician	persons	188	182	201	207	194	210	176	5,311
	tests	96,338	96,571	97,993	102,359	98,453	104,981	110,815	1,425,118
Hospital	persons	50	63	62	70	65	80	66	1,769
	tests	21,810	21,836	22,857	25,131	26,247	28,625	30,278	303,587
West 12th STD Clinic (5)	persons	19	8	17	9	11	18	19	354
	tests	3,011	3,529	2,060	4,105	3,541	3,143	3,413	50,102
Street Nurse Program (6)	persons	36	42	32	27	22	33	38	821
	tests	2,671	2,512	1,958	2,197	2,338	2,816	3,052	41,113
Health Unit	persons	4	4	5	6	4	8	4	176
	tests	6,132	5,828	5,633	5,849	5,619	5,514	5,853	79,837
Canadian Blood Services	persons	-	-	-	-	1	-	-	8
	tests	57	42	31	37	21	10	19	469
Study/Research (7)	persons	61	59	38	40	52	54	51	648
	tests	318	310	372	778	1,004	3,124	1,436	8,691
Vancouver Coastal Clinics (8)	persons	39	32	56	48	44	27	29	420
	tests	2,930	3,075	2,845	3,954	4,203	4,266	4,507	34,529
Treatment/Prevention Programs (9)	persons	4	2	3	11	6	7	11	50
	tests	651	642	835	1,017	1,046	936	831	7,083
Corrections (10)	persons	9	8	7	3	10	5	5	117
	tests	1,319	1,123	970	956	761	684	564	10,153
Other	persons	-	-	-	-	-	-	2	4
	tests	42	20	241	103	66	47	59	807
Unknown	persons	6	1	-	1	-	-	-	18
	tests	4	-	10	5	10	19	16	198
total:	persons	416	401	421	422	409	442	401	9,696
	tests	135,283	135,488	135,805	146,491	143,309	154,165	160,843	1,961,687

TESTS is number of HIV tests performed, both positive and negative, at the BCCDC and PHSA Laboratory Services. TOTAL column to far right is cumulative from 1989 to 2005 December 31.

(5), (6), (7), (8), (9) and (10) – refer to HIV FOOTNOTES on page 27.

HIV FOOTNOTES

No.	Risk Category	Footnote
(1)	blood/BP recipient	As of May 2003, the follow up of possible transfusion transmissible infections is initiated by the public health nurses who, in collaboration with the MHO and the client, report the occurrence to Canadian Blood Services.
(2)	occupational EXP	Follow-up is done on each positive HIV test in this risk category to determine if the person's positive test is the result of a <u>true</u> occupational exposure.
(3)	other	Includes the following: endemic area immigrants; needle puncture; blood contact from bite, fight, etc.; semen recipients; organ donors; non-injection drug use; and unspecified parenteral exposure.
(4)	perinatal	Since HIV antibody testing is not diagnostic prior to 18 months of age, HIV infections documented in this age group are confirmed by Oak Tree Clinic through direct identification of HIV by PCR, p24 antigen testing and/or HIV culture on two or more consecutive assays. This category also includes children infected through perinatal transmission who have not been previously identified prior to the age of 18 months by a direct detection method for HIV.

No.	Specimen Source	Footnote
(5)	West 12 th STD Clinic	Located at 655 West 12 th Avenue in Vancouver BC.
(6)	Street Nurse Program	HIV testing is done by the outreach nurses at various sites in the Lower Mainland, including: outreach clinics, city jails, and detoxification centres.
(7)	Study/Research	To address the outbreak of HIV among IDUs, the BC Centre for Excellence in HIV/AIDS and the BC Centre for Disease Control have initiated several open cohort studies (VIDUS, CEDAR, ESIS) to investigate the determinants of HIV transmission and the progression of HIV in this client population.
(8)	Vancouver Coastal Clinics	HIV testing is conducted by various community health clinics in Vancouver and Richmond.
(9)	Treatment/Prevention Programs	HIV testing is generally a requirement for admission to detoxification centres and drug/alcohol treatment centres.
(10)	Corrections	Many inmates choose to get an HIV antibody test done at the time of intake or discharge or when they perceive that they have been at risk of acquiring HIV.