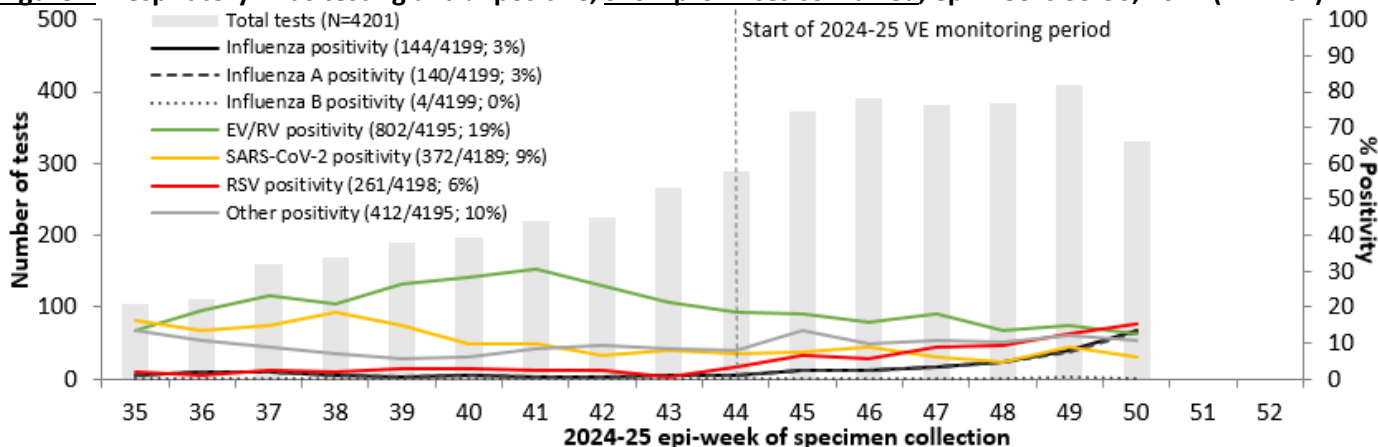


## SPSN Report #4, 2024-25 Season

### Epi Weeks 35 to 50: August 25 to December 14, 2024

Both influenza A and RSV are increasing in all SPSN provinces. The influenza A(H1N1) subtype is predominating. *M pneumoniae* and *C pneumoniae* detections in BC and Quebec are ongoing, exceeding prior seasons. Sentinels should please continue submitting swabs and questionnaires through the holiday period.

**Figure 1. Respiratory virus testing and % positive, SPSN provinces combined, epi-weeks 35-50, 2024 (N=4201)**

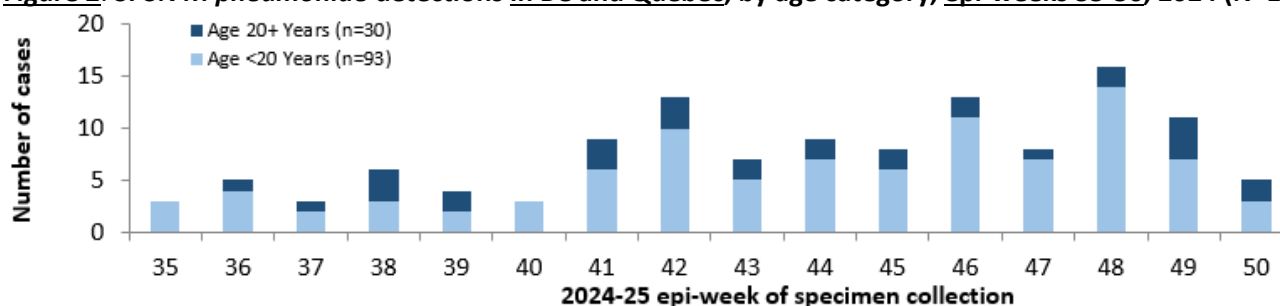


\* Tallies subject to change as data become more complete, notably for the most recent weeks. Viruses included in “other” category: parainfluenza, seasonal coronaviruses, human metapneumovirus, adenovirus. Of influenza A viruses subtyped, 99/134 (74%) are A(H1) and 35/134 (26%) are A(H3) overall, including 90/120 (75%) and 30/120 (25%), respectively, since week 44. Overall, 95 participants diagnosed with co-infections, mostly involving RSV. See **Figure 3** for findings by province. See **Table 2** for tallies by age group and province.

#### ***M pneumoniae* and *C pneumoniae***

In BC and Quebec, SPSN testing includes the atypical bacteria *Mycoplasma pneumoniae* and *Chlamydomphila pneumoniae*. For weeks 35 to 50, *M pneumoniae* positivity is higher than prior seasons at 7% (42/624) in BC and 5% (81/1767) in Quebec. *M pneumoniae* detections are ongoing with week 49-50 positivity of 6% and 5%, respectively (not shown). *C pneumoniae* detections also exceed recent prior seasons, with ~1% positivity in both provinces (14/2391 combined) since week 35 (not shown).

**Figure 2. SPSN *M pneumoniae* detections in BC and Quebec, by age category, epi-weeks 35-50, 2024 (N=123)\***

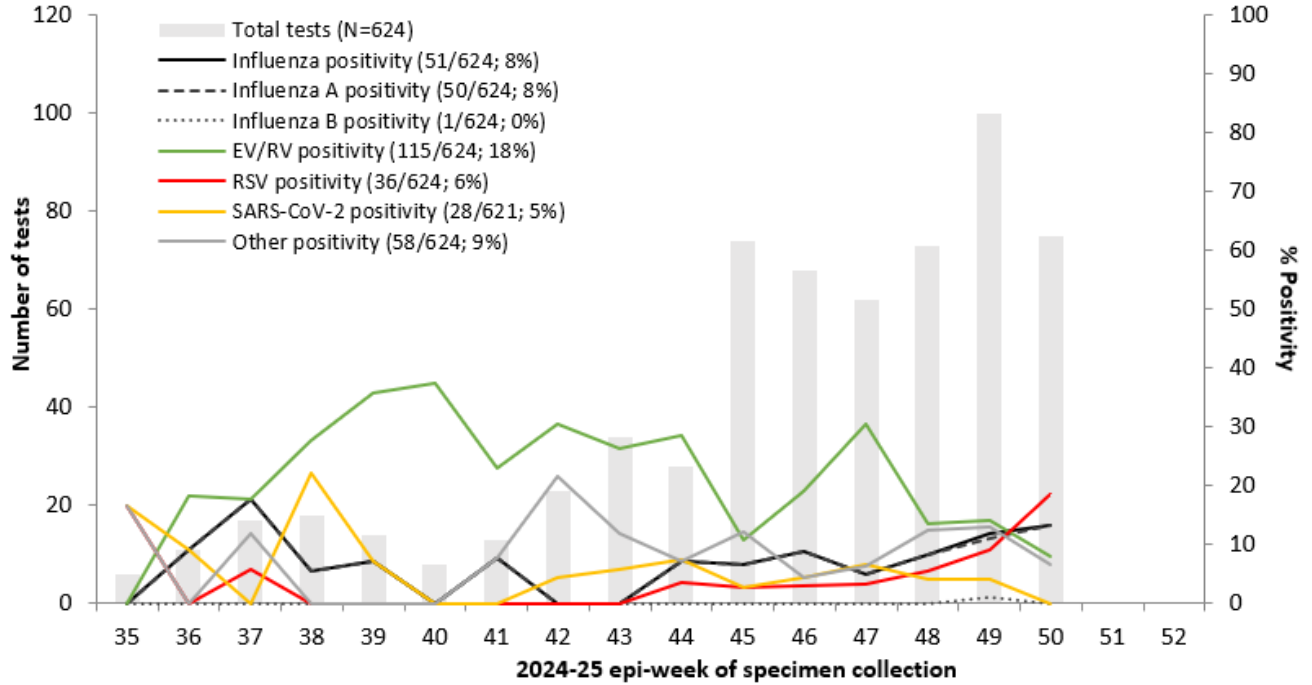


\* *M pneumoniae* reporting in BC and Quebec only. Tallies subject to change as data become more complete, notably for the most recent weeks.

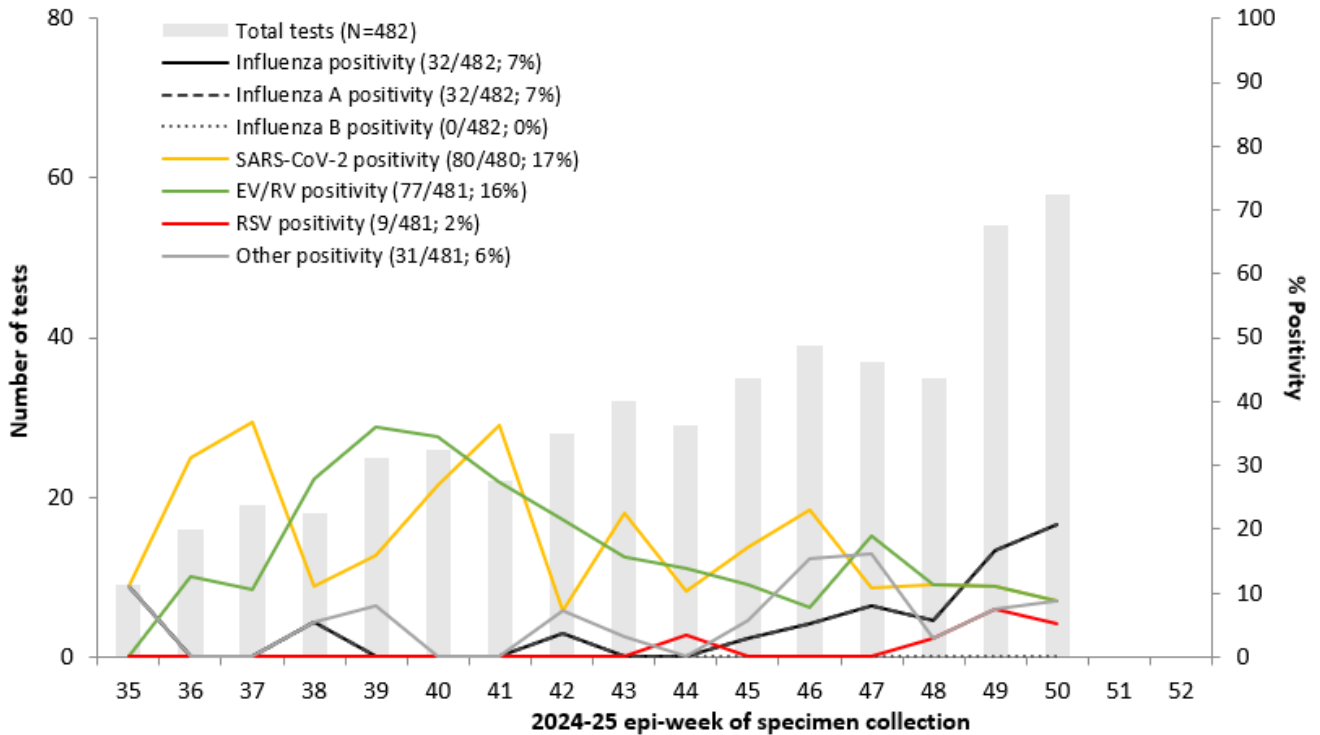
**Table 1. SPSN 2024-25 influenza and COVID-19 vaccine coverage among negative controls\***

Province	2024-25 self-reported influenza vaccination			2024-25 self-reported COVID-19 vaccination		
	Vaccinated	Total	% vaccinated	Vaccinated	Total	% vaccinated
Alberta	66	229	29%	51	219	23%
BC	127	408	31%	98	422	23%
Ontario	192	914	21%	103	838	12%
Quebec	84	715	12%	66	688	10%
<b>Overall</b>	<b>469</b>	<b>2266</b>	<b>21%</b>	<b>318</b>	<b>2167</b>	<b>15%</b>

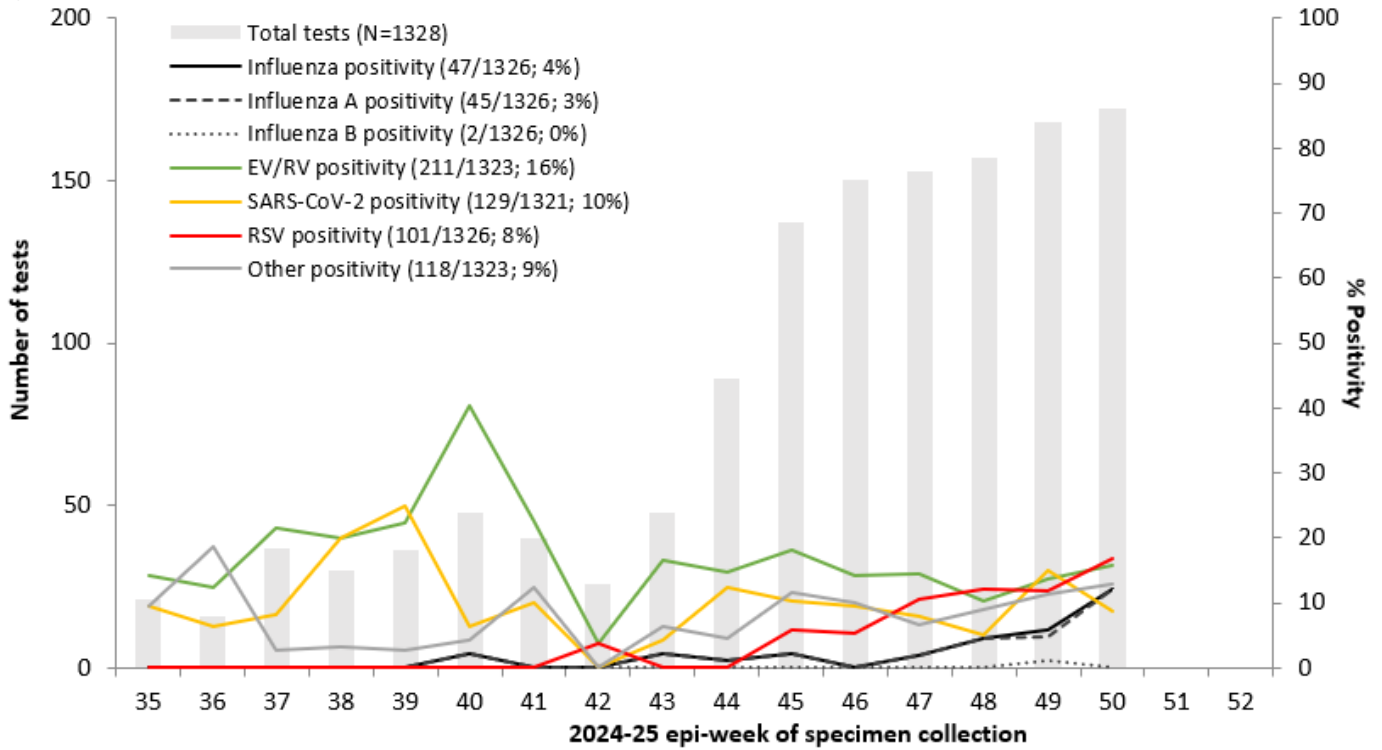
\* Since epi-week 44: denominator includes specimens from SPSN patients with acute respiratory illness who tested negative for the target virus and for whom 2024-25 vaccine status (yes/no) was reported; numerator is tally reporting vaccine receipt regardless of timing in relation to specimen collection.

**Figure 3.** Weekly testing and percent positivity among SPSN specimens by province, epi-weeks 35-50, 2024
**a) British Columbia**


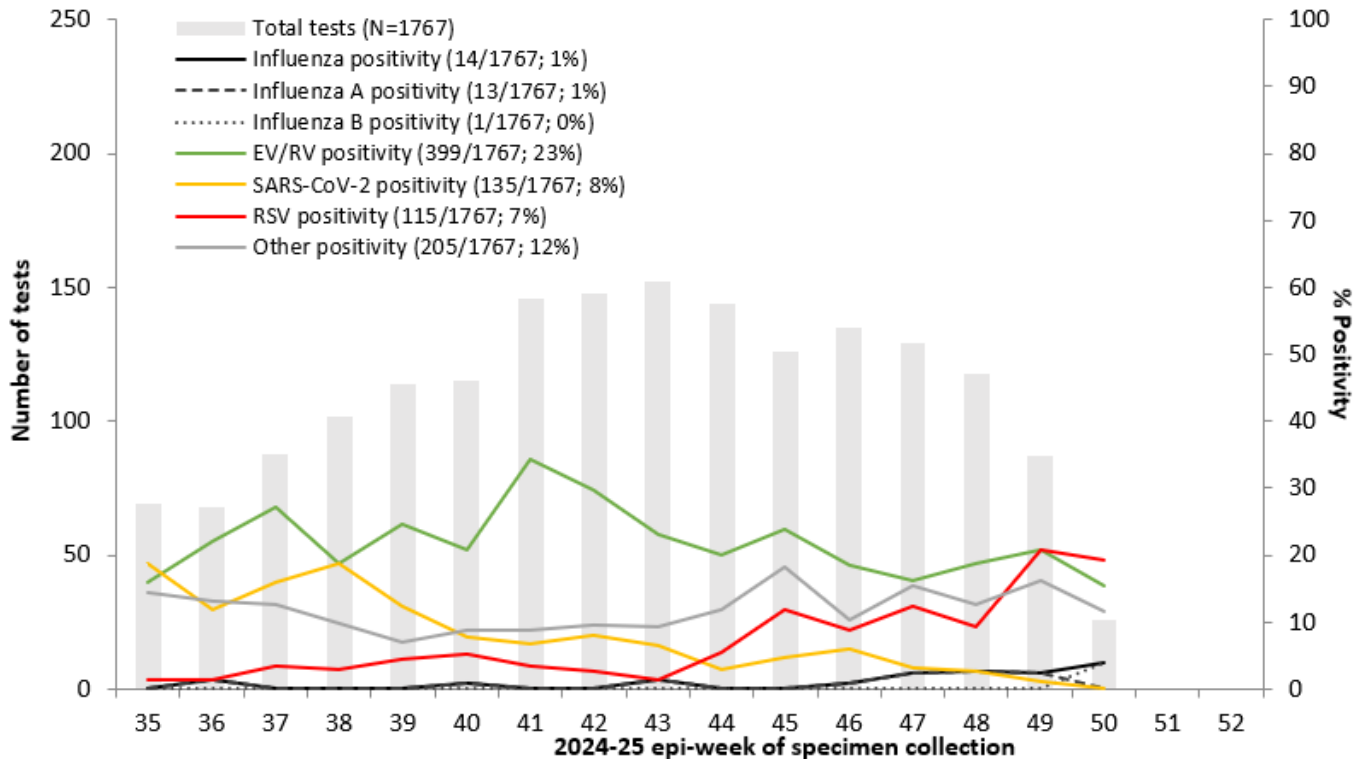
Specimens from both 2023-24 and 2024-25 requisitions are displayed. All tallies are subject to change as the season progresses and data become more complete, notably for the most recent weeks.

**b) Alberta**


Specimens from both 2023-24 and 2024-25 requisitions are displayed. All tallies are subject to change as the season progresses and data become more complete, notably for the most recent weeks.

**c) Ontario**


Specimens from both 2023-24 and 2024-25 requisitions are displayed. All tallies are subject to change as the season progresses and data become more complete, notably for the most recent weeks.

**d) Quebec**


Specimens from both 2023-24 and 2024-25 requisitions are displayed. All tallies are subject to change as the season progresses and data become more complete, notably for the most recent weeks.

**Table 2.** Specimens submitted to the SPSN by province and age group, epi-weeks 35-50, 2024 (N=4201)

Province	<5 years	5-8 years	9-19 years	20-49 years	50-64 years	65+ years	Total
AB	25	23	54	177	90	113	482
BC	45	55	143	199	102	80	624
ON	183	110	187	455	179	214	1328
QC	268	137	244	586	262	270	1767
<b>Total</b>	521	325	628	1417	633	677	4201

**Table 3.** Additional resources for respiratory pathogen surveillance

<p><b>Canada</b>  <a href="#">BCCDC - Respiratory Disease Dashboard</a>  <a href="#">PHAC - FluWatch Surveillance</a>  <a href="#">PHAC - Human Emerging Respiratory Pathogens Bulletins</a></p> <p><b>United States</b>  <a href="#">Washington State - Influenza Updates</a>  <a href="#">California State - Influenza and Respiratory Disease Surveillance Report</a>  <a href="#">CDC - Weekly Influenza Surveillance Report</a></p> <p><b>Europe</b>  <a href="#">Joint ECDC—WHO/Europe - Flu News</a></p> <p><b>Oceania</b>  <a href="#">Australian Influenza Surveillance Reports</a>  <a href="#">New Zealand Institute of Environmental Science and Research (ESR) - Acute Respiratory Illness Infections Dashboard</a></p>	<p><b>South Africa</b>  <a href="#">National Institute for Communicable Diseases - Weekly Respiratory Pathogens Surveillance Report</a></p> <p><b>World Health Organization</b>  <a href="#">Global Influenza Updates</a>  <a href="#">Weekly Epidemiological Record</a>  <a href="#">Recommendations for Influenza Vaccine Composition</a>  <a href="#">Influenza at the Human-Animal Interface Summary and Assessment Updates</a></p> <p><b>World Organization for Animal Health</b>  <a href="#">OFFLU - Animal influenza</a></p>
--	--