

Final Report Influenza Vaccine Coverage Staff of Long Term Care Facilities (LTCF) British Columbia, 2021/22

Background

Immunization coverage assessment is an important part of a quality immunization program and serves three main functions:

- i) Identifying populations with low levels of immunization coverage
- ii) Evaluating the delivery of immunization programs
- iii) Informing program planning

Targets for coverage among staff of long term care facilities at the provincial and national levels are 80%.¹

Objectives

To quantify the proportion of staff in BC long term care facilities who:

- i) Were vaccinated against influenza in the 2021/22 season
- ii) Self-reported their vaccination or vaccine declination, including by job type

Methods

Please refer to the separate Methods document for a full description of methods including definitions, data sources, and analyses as well as changes to methodology that should be used to interpret coverage trends over time.

Results

Reporting of facilities (**Table 1 & 2**)

- There are 354 long term care facilities in BC, but 17 of these are within acute care sites and the data on staff cannot be disaggregated from acute care staff. Therefore, only 337 facilities are able to report on staff influenza vaccine uptake; 139 (41%) of these reported.
- 97/139 (70%) facilities used data from the WHITE² database; 42/139 (30%) facilities for which WHITE data were not available provided aggregate data.

2021/22 influenza vaccination coverage (**Figures 1-3, Table 3**)

- 54% (8,465/15,692) of staff of long term care facilities with data available reported influenza vaccine receipt, the lowest since the Influenza Prevention Policy was enacted in 2012/13
- 48% to 59% coverage was the range across the five regional health authorities
- 36% to 68% coverage was the range across the sixteen health service delivery areas
- 4% to 100% coverage was the range across long term care facilities in BC
- 14/337 (4%) facilities met the provincial and national target of 80% coverage

Results excluding privately funded facilities

- Out of 301 owned and operated, or contracted long term care facilities in BC, 284 are included in this analysis, and 106 (37%) reported influenza immunization coverage for long term care staff
- 49% to 58% coverage was the range across the five regional health authorities
- 53% (7,453/14,132) of staff were vaccinated against influenza

¹Public Health Agency of Canada. Vaccination Coverage Goals and Vaccine Preventable Disease Reduction Targets by 2025. Available at: <https://www.canada.ca/en/public-health/services/immunization-vaccine-priorities/national-immunization-strategy/vaccination-coverage-goals-vaccine-preventable-diseases-reduction-targets-2025.html>

² WHITE: Workplace Health Indicator Tracking and Evaluation database

Table 1. Long term care facilities included by health authority, 2021/22

Health authority	Reported facilities	Facilities included in analysis	% reported	Excluded from analysis*	Total LTC Facilities
Interior	37	80	46	6	86
Fraser	19	93	20	0	93
Vancouver Coastal	21	66	32	2	68
Vancouver Island	45	81	56	2	83
Northern	17	17	100	7	24
British Columbia	139	337	41	17	354

* Facilities were excluded from analysis if they were based in an acute site, and, therefore, staff coverage could not be disaggregated from the acute site in the WHITE data.

Table 2. Data source used to calculate influenza vaccination coverage, 2021/22

Health authority	Long term care facilities		
	WHITE	Aggregate	Total
Interior	34	3	37
Fraser	14	5	19
Vancouver Coastal	19	2	21
Vancouver Island	15	30	45
Northern	15	2	17
British Columbia	97	42	139

WHITE data were preferentially used when available.

Aggregate: facility influenza immunization coverage statistics were reported in aggregate format by health authority staff.

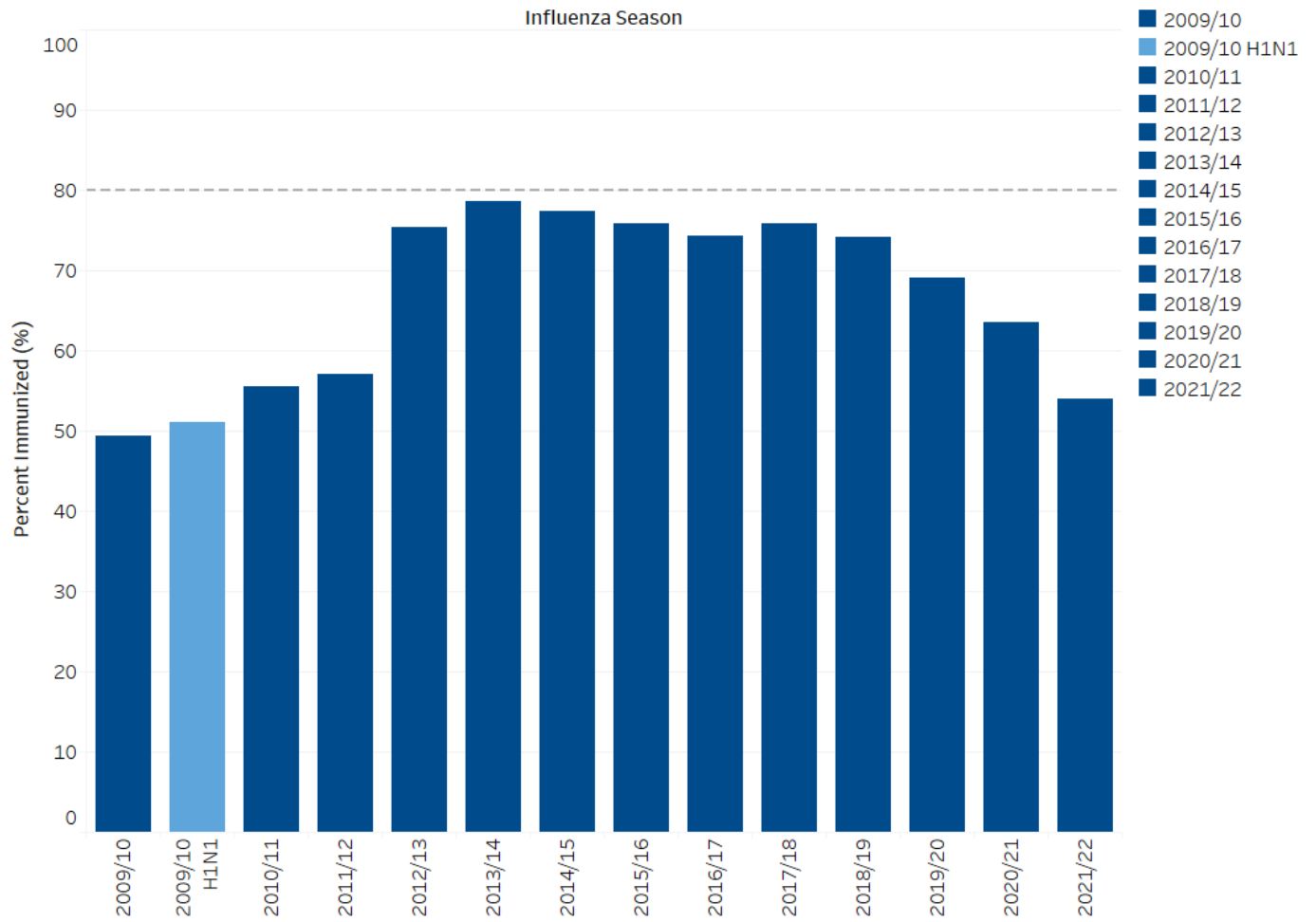


Figure 1. Influenza immunization coverage for staff of long term care facilities by influenza season, British Columbia 2009/10 - 2021/22

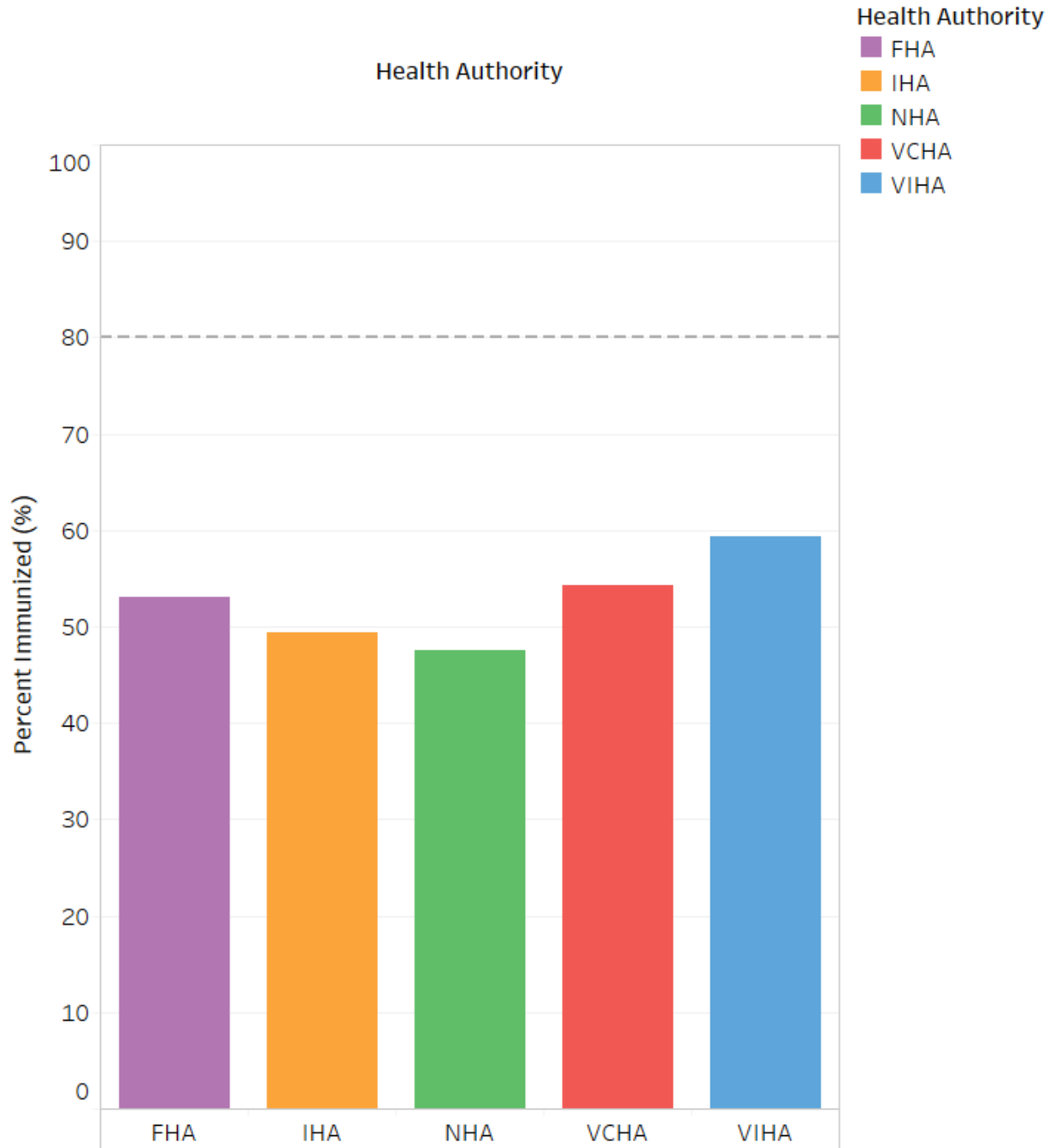


Figure 2. Influenza immunization coverage for staff of long term care facilities by health authority, British Columbia 2021/22

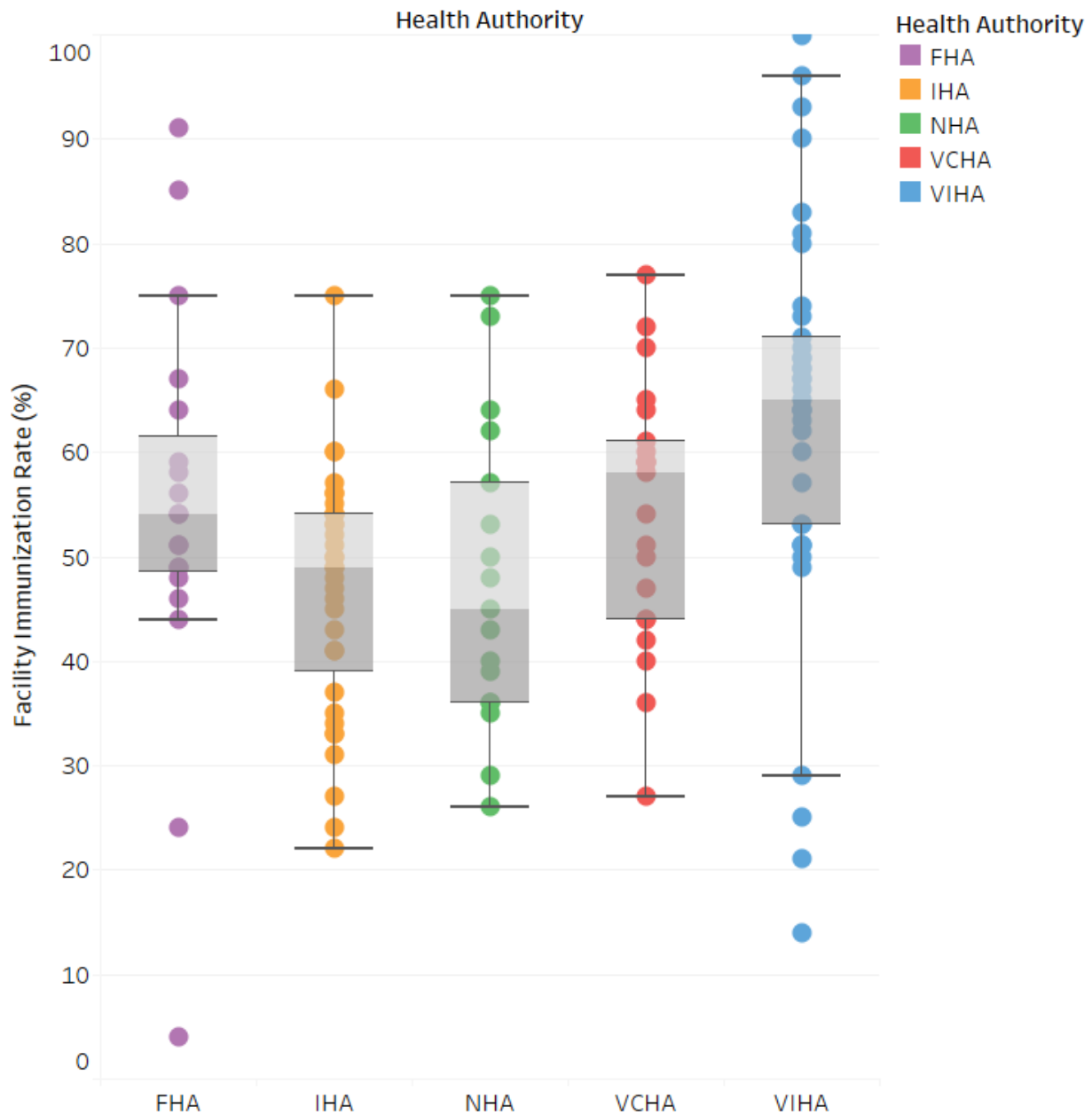


Figure 3. Influenza immunization coverage for staff of long term care facilities per facility and by health authority, British Columbia 2021/22

Figure 3 illustrates the distribution of influenza vaccine coverage for residents of LTCFs by facility in each health authority for the 2022/23 influenza season. The horizontal lines represent the minimum*, 25th percentile, median (transition from light to dark grey), 75th percentile, and maximum.

* After excluding outliers. Outliers are those below the 25th percentile minus 1.5 times the interquartile range.

Table 3. Immunization coverage for staff of long term care facilities by health authority and health service delivery area, 2011/12 to 2021/22

		Influenza season										
Health authority		2011/12	2012/13	2013/14	2014/15	2015/16	2016/17	2017/18	2018/19	2019/20	2020/21	2021/22
INTERIOR	immunized	4,359	5,386	4,801	5,819	5,627	6,366	6,258	5,735	5,686	3,191	1,666
	total staff	8,807	7,815	6,547	7,878	7,803	8,906	8,703	8,627	8,876	5,577	3,375
	% immunized	49	69	73	74	72	71	72	66	64	57	49
East Kootenay	immunized	277	655	626	594	650	703	626	576	567	403	343
	total staff	690	946	935	802	1,054	1,029	986	755	805	649	648
	% immunized	40	69	67	74	62	68	63	76	70	62	53
Kootenay Boundary	immunized	324	538	583	522	546	633	670	500	495	484	147
	total staff	777	881	836	809	779	915	978	924	909	922	414
	% immunized	42	61	70	65	70	69	69	54	55	52	36
Okanagan	immunized	3,051	3,181	2,272	3,286	3,117	3,622	3,490	3,398	3,283	1,723	760
	total staff	5,943	4,640	3,105	4,515	4,208	5,049	4,839	5,274	5,308	3,128	1,531
	% immunized	51	69	73	73	74	72	72	64	62	55	50
Thomps Carib Shuswap	immunized	707	1,012	1,320	1,417	1,314	1,408	1,472	1,261	1,341	581	416
	total staff	1,397	1,348	1,671	1,752	1,762	1,913	1,900	1,674	1,854	878	782
	% immunized	51	75	79	81	75	74	79	75	72	66	53
FRASER	immunized	6,903	8,756	6,059	8,247	7,494	9,653	11,281	10,322	7,954	7,071	1,392
	total staff	11,041	10,955	6,937	10,084	9,457	12,708	14,259	13,110	11,203	10,210	2,624
	% immunized	63	80	87	82	79	76	79	79	71	69	53
Fraser East	immunized	1,370	1,409	875	1,434	1,533	1,752	2,278	1,625	1,574	1,304	245
	total staff	2,093	1,839	999	1,755	1,907	2,293	2,895	2,072	2,177	2,212	528
	% immunized	65	77	88	82	80	76	79	78	72	59	46
Fraser North	immunized	2,616	3,362	2,589	3,577	2,801	3,495	4,220	3,827	3,141	2,586	527
	total staff	3,955	4,213	3,025	4,562	3,470	4,528	5,214	4,742	4,339	3,515	958
	% immunized	66	80	86	78	81	77	81	81	72	74	55
Fraser South	immunized	2,917	3,985	2,595	3,236	3,160	4,406	4,783	4,870	3,239	3,181	620
	total staff	4,993	4,903	2,913	3,767	4,080	5,887	6,150	6,296	4,687	4,483	1,138
	% immunized	58	81	89	86	77	75	78	77	69	71	54

Table 3 (cont'd): Immunization coverage for staff of long term care facilities by health authority and health service delivery area, 2011/12 to 2021/22

Health authority		Influenza season										
		2011/12	2012/13	2013/14	2014/15	2015/16	2016/17	2017/18	2018/19	2019/20	2020/21	2021/22
VANCOUVER COASTAL	immunized	5,272	6,350	7,077	5,652	7,028	6,789	6,312	5,877	4,025	2,063	1,750
	total staff	7,816	7,652	8,491	6,672	8,215	8,233	7,750	7,432	5,527	3,233	3,222
	% immunized	67	83	83	85	86	82	81	79	73	64	54
Richmond	immunized	625	701	805	644	789	725	337	590	309	280	231
	total staff	903	803	918	706	894	847	447	736	404	403	409
	% immunized	69	87	88	91	88	86	84	80	77	70	56
Vancouver	immunized	3,445	4,196	4,827	3,881	4,493	4,612	4,396	4,556	2,732	1,232	1,117
	total staff	4,922	5,020	5,662	4,514	5,267	5,507	5,339	5,691	3,479	1,872	1,864
	% immunized	70	84	85	86	85	84	82	80	79	66	60
N Shore/Coast Garibaldi	immunized	1,202	1,453	1,445	1,127	1,746	1,452	1,539	731	984	551	402
	total staff	1,991	1,829	1,911	1,452	2,054	1,879	1,964	1,005	1,644	958	949
	% immunized	60	79	76	78	85	77	78	73	60	58	42
VANCOUVER ISLAND	immunized	4,166	5,852	6,068	6,350	6,240	6,005	6,660	6,614	6,774	5,824	2,898
	total staff	8,244	8,370	8,429	8,941	9,049	8,834	9,446	9,265	9,847	9,248	4,877
	% immunized	51	70	72	71	69	68	71	71	69	63	59
South Van Island	immunized	2,170	3,263	3,273	3,487	3,316	3,229	3,682	3,513	3,491	3,158	1,729
	total staff	4,016	4,563	4,475	4,992	4,936	4,748	5,200	4,928	5,145	4,541	2,530
	% immunized	54	72	73	70	67	68	71	71	68	70	68
Central Van Island	immunized	1,441	1,894	2,107	2,163	2,194	2,020	2,221	2,384	2,463	1,854	873
	total staff	3,218	2,828	3,106	3,117	3,212	3,120	3,273	3,429	3,726	3,483	1,847
	% immunized	45	67	68	69	68	65	68	70	66	53	47
North Van Island	immunized	555	695	688	700	730	756	757	717	820	812	296
	total staff	1,010	979	848	832	901	966	973	908	976	1,224	500
	% immunized	55	71	81	84	81	78	78	79	84	66	59

Table 3 (cont'd). Immunization coverage for staff of long term care facilities by health authority and health service delivery area, 2011/12 to 2021/22

Health authority		Influenza season										
		2011/12	2012/13	2013/14	2014/15	2015/16	2016/17	2017/18	2018/19	2019/20	2020/21	2021/22
NORTHERN	immunized	835	1,273	1,035	1,099	974	1,078	1,156	1,033	1,157	857	759
	total staff	1,792	1,828	1,432	1,558	1,544	1,562	1,596	1,416	1,639	1,657	1,594
	% immunized	47	70	72	71	63	69	72	73	71	52	48
Northwest	immunized	296	394	287	327	271	292	333	276	336	269	239
	total staff	511	495	368	401	382	416	439	352	450	438	449
	% immunized	58	80	78	82	71	70	76	78	75	61	53
Northern Interior	immunized	423	616	574	594	542	597	612	584	631	469	391
	total staff	875	866	769	857	843	833	838	795	865	905	845
	% immunized	48	71	75	69	64	72	73	73	73	52	46
Northeast	immunized	116	263	174	178	161	189	211	173	190	119	129
	total staff	406	467	295	300	319	313	320	269	324	314	300
	% immunized	29	56	59	59	50	60	66	64	59	38	43
BC	immunized	21,535	27,617	25,040	27,167	27,363	29,891	31,667	29,581	25,59	19,006	8,465
	total staff	37,700	36,620	31,836	35,133	36,068	40,243	41,755	39,850	37,09	29,925	15,692
	% immunized	57	75	79	77	76	74	76	74	69	64	54

2021/22 policy compliance results (**Figure 4, Table 4**)

- Policy compliance status was available for 82% (12,856/15,692) of staff at long term care facilities (i.e., those that are included in WHITE data)
- Allied health staff reported the highest coverage
- 53% of staff in long term care facilities in BC reported being vaccinated, 16% reported declining vaccination, and 31% did not report vaccination status and were considered unvaccinated for the purpose of this report

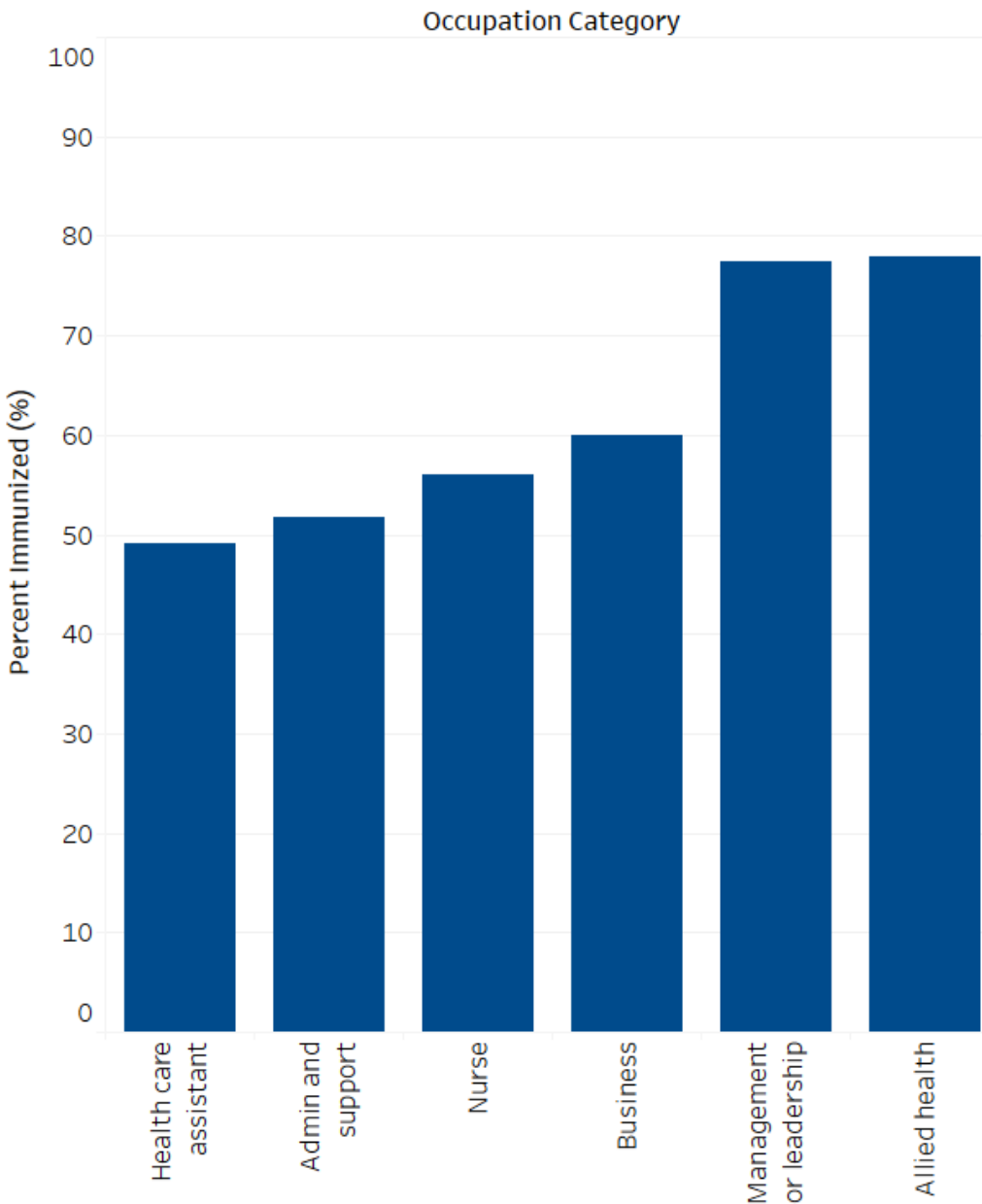


Figure 4. Influenza immunization coverage for staff of long term care facilities by occupation group, British Columbia 2021/22

Table 4. Influenza Prevention Policy compliance for staff of long term care facilities who are included in WHITE by health authority, 2021/22

Health Authority	Compliance Status						Total No.	Total %
	Vaccinated		Declined		Not reported			
	No.	%	No.	%	No.	%		
IHA	1,618	49	454	14	1,219	37	3,291	100
FHA	1,224	52	519	22	6,33	27	2,376	100
VCHA	1,566	53	117	4	1,286	43	2,969	100
VIHA	1,723	63	570	21	451	16	2,744	100
NHA	725	49	349	24	402	27	1,476	100
Total	6,856	53	2,009	16	3,991	31	12,856	100