

Influenza vaccination coverage for staff of residential care facilities British Columbia, 2017/18

Background

Immunization coverage assessment is an important part of a quality immunization program and serves three main functions:

- i) Identifying populations with low levels of immunization coverage
- ii) Evaluating the delivery of immunization programs
- iii) Informing program planning

Targets for coverage in among staff of long term care facilities at the provincial and national levels are 80%, and 95% at the national level for staff with extensive resident contact.^{1,2}

From the 2007/08 to 2011/12 influenza seasons, influenza vaccination coverage for staff of residential care facilities in BC ranged from 49% to 67%. Coverage increased following implementation of the new BC Influenza Prevention Policy, ranging from 75% to 79% for seasons 2012/13 through 2016/17.

The BC Influenza Prevention Policy requires healthcare workers in all health authorities to be vaccinated against influenza or to wear a surgical mask while in patient care areas during the influenza season. The policy covers all health authority staff who work in patient care areas: unionized and excluded staff, volunteers, paramedics, students, contractors, and physicians. The policy was widely communicated and its implementation was accompanied by strategies such as the use of peer immunizers. Staff reporting of their influenza immunization was enabled through an online immunization self-reporting website. Disciplinary measures for staff who do not comply with the Policy which were enacted beginning 2013/14 include loss of privileges and termination of employment.

Objective

To quantify the percentage of staff in residential care facilities in British Columbia who were vaccinated against influenza during the 2017/18 influenza season.

Methods

Influenza immunization coverage for healthcare workers in residential care facilities was calculated at the facility level, health service delivery area level, health authority level, and for BC. There are five regional health authorities, which are comprised of 16 health service delivery areas.

Residential care facilities were defined as facilities with 50% or more residents aged 65 years and older that are either:

- licensed under the Hospital Act; or
- licensed under the Community Care and Assisted Living Act and provide some health care services.

1. Immunize BC: a strategic framework for immunization in B.C. 2007. Victoria, BC: British Columbia Ministry of Health. Available at:

<http://www.health.gov.bc.ca/library/publications/year/2007/immunizebc.pdf>

2. Public Health Agency of Canada. Vaccination Coverage Goals and Vaccine Preventable Disease Reduction Targets by 2025. Available at: <https://www.canada.ca/en/public-health/services/immunization-vaccine-priorities/national-immunization-strategy/vaccination-coverage-goals-vaccine-preventable-diseases-reduction-targets-2025.html>

There were two sources of influenza vaccination coverage data: an anonymised individual healthcare worker level dataset from the electronic Workplace Health Indicator Tracking and Evaluation (WHITE) database of occupational health records, and aggregate data entered by health authority staff into a BC Centre for Disease Control (BCCDC) web application. When data from both sources were available for an individual institution, WHITE data were used.

This was the sixth season of influenza coverage reporting using WHITE data. Staff whose records were included in the analysis must have been employed by a health authority and have worked for a minimum of 8 hours from December 1, 2017 to February 28, 2018. Staff who were not on a health authority's payroll (contracted staff, trainees, etc.) were not included in the WHITE database. Physicians and medical residents were not included in the WHITE database for most facilities. The BCCDC web application data were aggregate data at the facility level, and were obtained by health authority staff directly from facilities or using administrative, including WHITE, databases.

Staff were defined as all persons who work or train on a full time, part time or casual basis in a facility or hospital who have direct or indirect contact with patients or residents, regardless of whether they are healthcare workers. This includes administrative and non-patient care staff (e.g., medical records, housekeeping and dietary) and excludes volunteers. This definition of staff is unchanged since the 2013/14 season and is based on the Ministry's Performance Agreements.

For the provincial analysis, healthcare workers were counted in the facility and region where they work, rather than by their health authority employer. Some healthcare workers worked at multiple facilities during the influenza season. While the WHITE data base contains information on HCWs working at multiple facilities, for the purpose of coverage analysis HCWs were assigned to the facility in which they worked the most hours. For coverage statistics at the provincial, health authority or health service delivery area level, each healthcare worker was included only in the facility where they worked the most hours. For facility level coverage statistics, healthcare workers were included in each facility where they worked for at least 8 hours during the influenza season. This is the same method that was used for the last two seasons' (2015/16 and 2016/17) coverage reports. LTC facilities were excluded from the denominator if they are based in an acute care facility and the HCW immunization coverage data for these facilities could not be disaggregated from the acute care facility.

Changes in coverage rates over time should be interpreted with caution as the data collection methods have changed from aggregate facility level reporting of immunization coverage as of February 28th each year prior to the 2012/13 season to individual healthcare worker level reporting using WHITE data for facilities that use WHITE, and there have been incremental methodological changes in the use of WHITE data.

Coverage rates were also calculated excluding privately funded facilities, and these results for the subset of facilities that are health authority owned and operated, and contracted are shown in Tables 6 and 7.

Results

Reporting of facilities (Tables 1.a and 2.a)

- Out of 365 residential care facilities in BC, 336/354 (95%) of facilities that report healthcare worker influenza immunization coverage for residential care staff are included in this report.
- 95/336 (29%) facilities used data from the WHITE database; 241/336 (71%) facilities used data entered by health authority staff into the BCCDC web application because WHITE data were not available.

2017/18 influenza vaccination coverage (Tables 3.a and 4.a; Figures 1.a to 5.a)

- 76% (30,663/40,348) of staff of residential care facilities in BC were vaccinated against influenza, an increase from last year (74%)
- 71% to 81% coverage was the range across the five regional health authorities
- 63% to 84% coverage was the range across the sixteen health service delivery areas
- 1% to 100% coverage was the range across all residential care facilities in BC
- 162/323 (50%) facilities met the provincial and national target of 80% coverage, similar to prior years with 174/345 (50%) in 2016/17, 163/324 (50%) in 2015/16, and 151/296 (51%) in 2014/15.

Results excluding privately funded facilities (Tables 6.a and 7.a)

- 239/243 (98%) owned and operated, or contracted residential facilities that report coverage for residential care staff were included
- 71% to 81% coverage was the range across the five regional health authorities
- 75% (24,095/30,012) of staff were vaccinated against influenza

Summary

Influenza immunization data were available for the majority (92%) of residential care facilities included in this report. Influenza vaccination coverage for staff of residential care facilities in BC was 76%, below the Immunize BC target of 80% coverage but 2% higher than last season. Coverage was 75% when privately funded facilities were excluded from the analysis.

Within each health authority, there was a wide range of influenza vaccination coverage for residential care facilities. The reasons behind the variation in vaccination coverage between facilities were not assessed.

Influenza immunization coverage for residential facility healthcare workers in BC was higher in the 2017/18 season (76%) compared to the 2016/17 season (74%), and similar to the 2015/16 season (76%), and 2014/15 season (77%). Despite not meeting the 80% Immunize BC target, coverage during the last five influenza seasons was much higher than before the BC Influenza Prevention Policy was implemented.

Tables and Figures

Table 1.a: Residential care facilities included by health authority, 2017/18

Health authority	Reported	Reported (%)	Excluded from report	Total LTC Facilities
Interior	86	97	-	89
Fraser	100	96	-	104
Vancouver Coastal	51	82	-	62
Vancouver Island	83	100	3	86
Northern	16	100	7	24
British Columbia	336	98	10	365

Table 2.a: Data source used to calculate influenza vaccination coverage, 2017/18

Health authority	Residential care facilities		Total
	WHITE*	Aggregate*	
Interior	32	54	86
Fraser	15	85	100
Vancouver Coastal	18	33	51
Vancouver Island	16	67	83
Northern	14	2	16
British Columbia	95	241	336

Note: WHITE data were preferentially used when available.

* WHITE: facility influenza immunization coverage statistics were calculated from the Workplace Health Indicator Tracking and Evaluation database.

Aggregate: facility influenza immunization coverage statistics were reported in aggregate format by health authority staff using an online database. Aggregate reporting from Fraser Health does not include casual staff.

Table 3.a: Influenza vaccination coverage for staff of residential care facilities by health authority and health service delivery area, 2017/18

Health authority	Residential care facility staff		
	Immunized	Total	%
Interior	6,258	8,703	72
East Kootenay	626	986	63
Kootenay Boundary	670	978	69
Okanagan	3,490	4,839	72
Thompson/Cariboo/Shuswap	1,472	1,900	77
Fraser	11,281	14,259	79
Fraser East	2,278	2,895	79
Fraser North	4,220	5,214	81
Fraser South	4,783	6,150	78
Vancouver Coastal	6,312	7,750	81
Richmond	377	447	84
Vancouver	4,396	5,339	82
N Shore/Coast Garibaldi	1,539	1,964	78
Vancouver Island	6,660	9,446	71
South Vancouver Island	3,682	5,200	71
Central Vancouver Island	2,221	3,273	68
North Vancouver Island	757	973	78
Northern	1,156	1,597	72
Northwest	333	439	76
Northern Interior	612	838	73
Northeast	211	320	66
BC	31,667	41,755	76

Table 4.a: Residential care facility staff influenza vaccination coverage by health authority, 2008/09 to 2017/18

Health authority	Influenza immunization coverage (%) for staff of residential care facilities by influenza season									
	2008/09	2009/10	2010/11	2011/12	2012/13	2013/14	2014/15	2015/16	2016/17	2017/18
Interior	56	42	48	49	69	73	74	72	71	72
Fraser	67	53	58	63	80	87	82	79	76	79
Vancouver Coastal	74	61	69	67	83	83	85	86	82	81
Vancouver Island	58	43	47	51	70	72	71	69	68	71
Northern	49	32	49	47	70	72	71	63	69	72
British Columbia	64	49	56	57	75	79	77	76	74	76

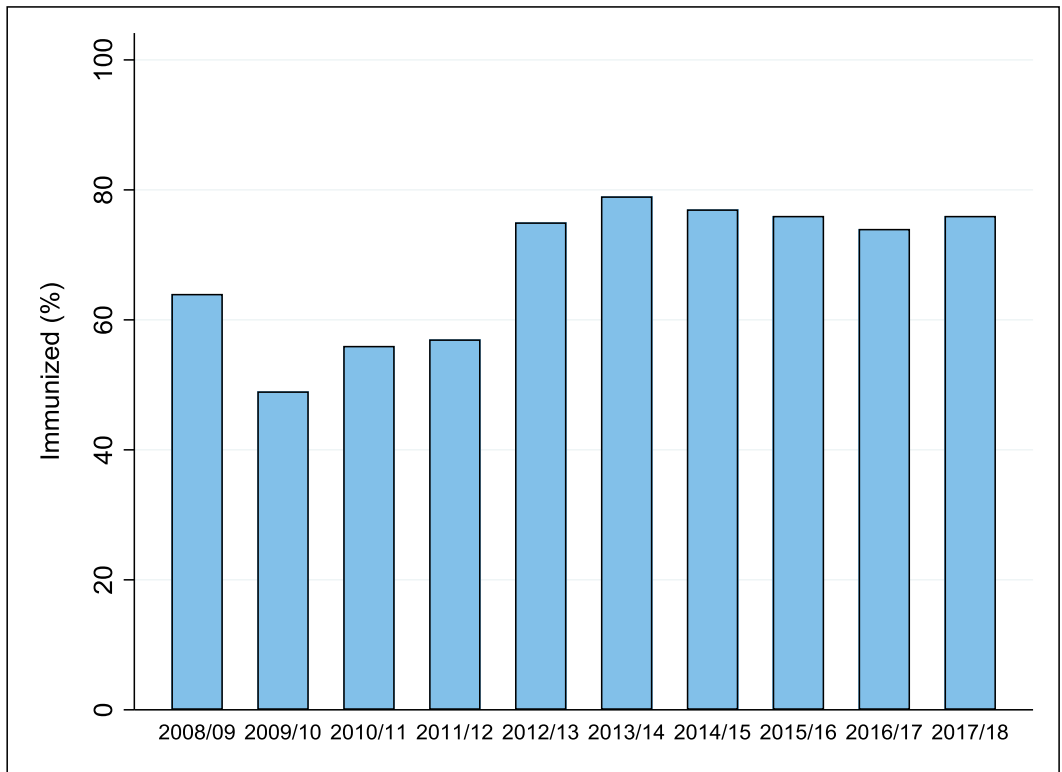


Figure 1.a: Influenza immunization coverage for staff of residential care facilities, 2008/09 to 2017/18

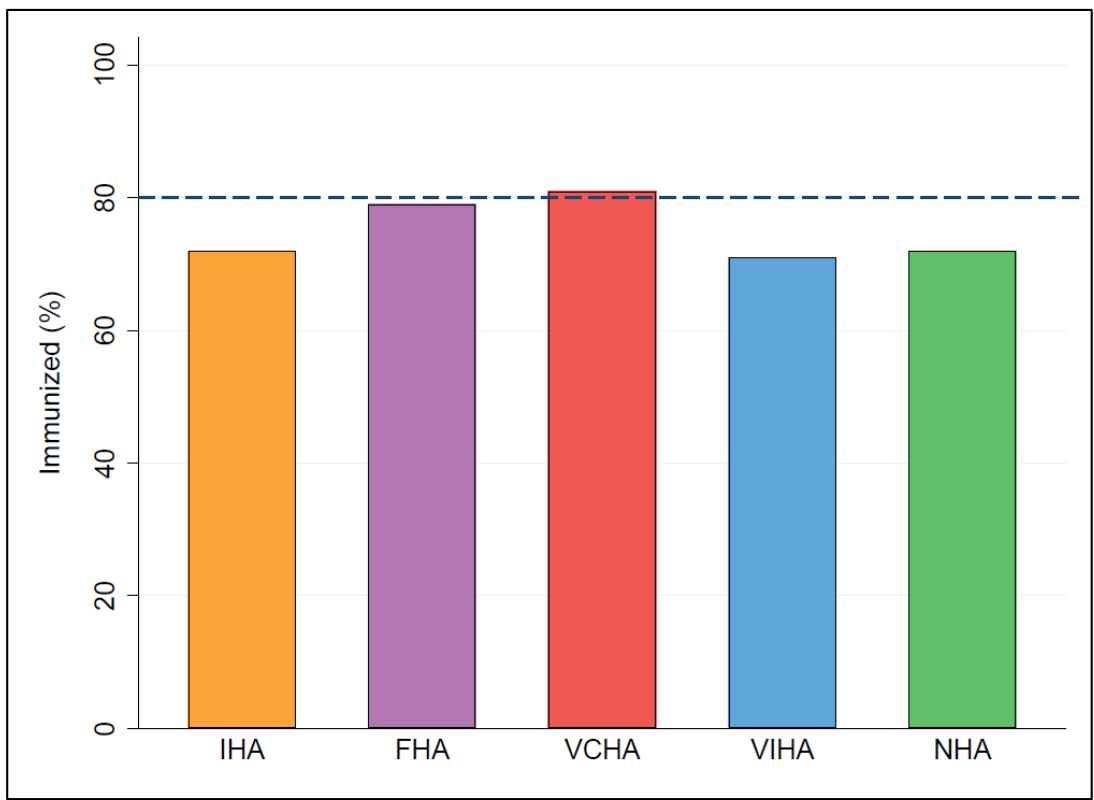


Figure 2.a: Influenza immunization coverage for staff of residential care facilities by health authority, 2017/18

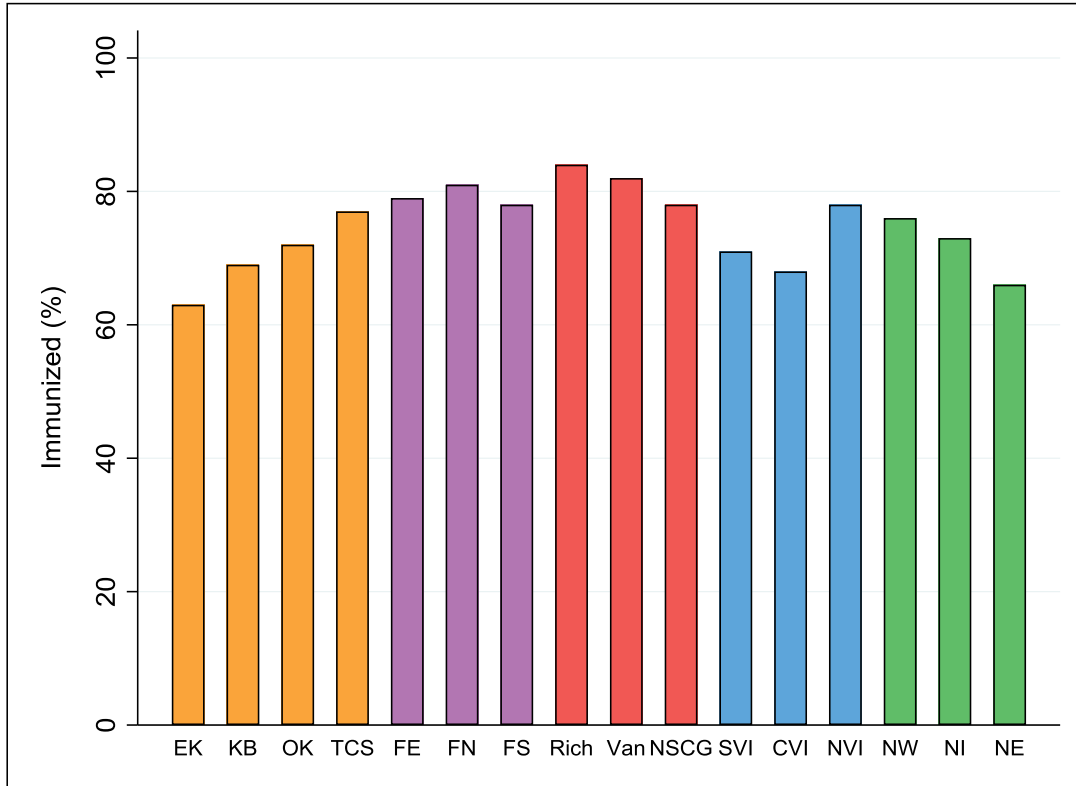


Figure 3.a: Influenza immunization coverage for staff of residential care facilities by health service delivery area, 2017/18

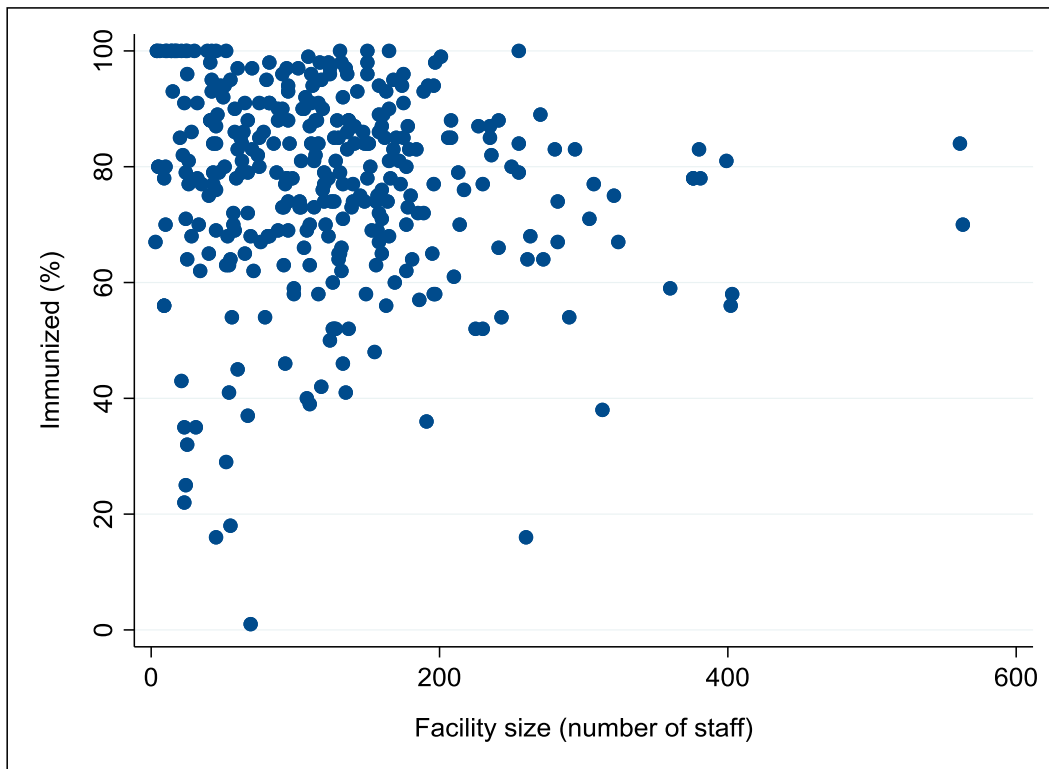


Figure 4.a: Influenza immunization coverage for staff of residential care facilities by facility size (number of staff), 2017/18

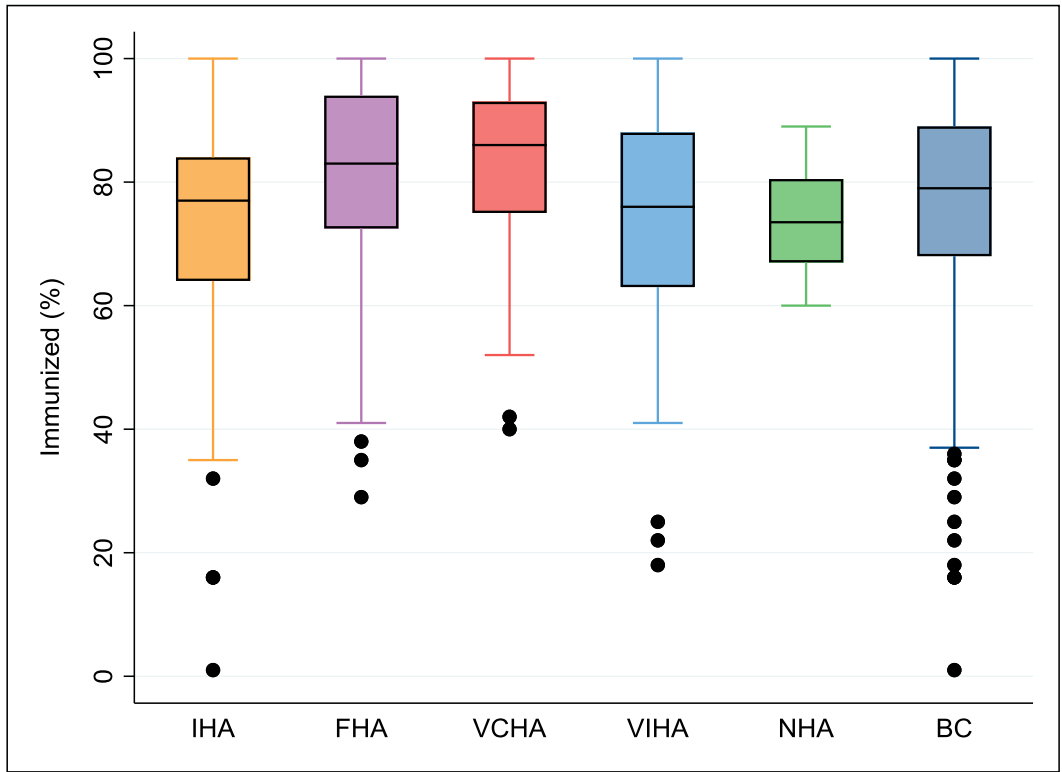


Figure 5.a: Influenza immunization coverage for staff of residential care facilities by facility within each health authority, 2017/18[†]

[†]Figure 5 illustrates the range of influenza immunization coverage for residential care facilities in each health authority and for BC for the 2017/18 influenza season. The horizontal line below each box represents the low est observed coverage value that is greater than or equal to the first quartile minus 1.5 times the interquartile range; the lower edge of each box represents the 25th percentile; the solid horizontal line within each box represent the median coverage value; the upper edge of each box represents the 75th percentile; the horizontal line above each box represents the highest observed coverage value that is less than or equal to the third quartile plus 1.5 times the interquartile range; and the dots represent facilities with unusually high or low coverage values which are outliers.

Table 5.a: Immunization coverage for staff of residential care facilities by health authority and health service delivery area, 2009/10 to 2017/18

Health authority		Influenza season									
		2009/10	2009/10 H1N1	2010/11	2011/12	2012/13	2013/14	2014/15	2015/16	2016/17	2017/18
INTERIOR	immunized	3,300	-	3,606	4,359	5,386	4,801	5,819	5,627	6,366	6,258
	total staff	7,913	-	7,576	8,807	7,815	6,547	7,878	7,803	8,906	8,703
	% immunized	42	-	48	49	69	73	74	72	71	72
East Kootenay	immunized	303	-	235	277	655	626	594	650	703	626
	total staff	786	-	633	690	946	935	802	1,054	1,029	986
	% immunized	39	-	37	40	69	67	74	62	68	63
Kootenay Boundary	immunized	260	-	307	324	538	583	522	546	633	670
	total staff	824	-	878	777	881	836	809	779	915	978
	% immunized	32	-	35	42	61	70	65	70	69	69
Okanagan	immunized	1,809	-	2,075	3,051	3,181	2,272	3,286	3,117	3,622	3,490
	total staff	4,572	-	4,332	5,943	4,640	3,105	4,515	4,208	5,049	4,839
	% immunized	40	-	48	51	69	73	73	74	72	72
Thomps Carib Shuswap	immunized	928	-	989	707	1,012	1,320	1,417	1,314	1,408	1,472
	total staff	1,731	-	1,733	1,397	1,348	1,671	1,752	1,762	1,913	1,900
	% immunized	54	-	57	51	75	79	81	75	74	79
FRASER	immunized	5,790	5,661	6,262	6,903	8,756	6,059	8,247	7,494	9,653	11,281
	total staff	10,890	10,795	10,746	11,041	10,955	6,937	10,084	9,457	12,708	14,259
	% immunized	53	52	58	63	80	87	82	79	76	79
Fraser East	immunized	1,118	1,010	1,303	1,370	1,409	875	1,434	1,533	1,752	2,278
	total staff	2,185	2,179	2,109	2,093	1,839	999	1,755	1,907	2,293	2,895
	% immunized	51	46	62	65	77	88	82	80	76	79
Fraser North	immunized	2,187	2,155	2,294	2,616	3,362	2,589	3,577	2,801	3,495	4,220
	total staff	3,818	3,806	3,982	3,955	4,213	3,025	4,562	3,470	4,528	5,214
	% immunized	57	57	58	66	80	86	78	81	77	81
Fraser South	immunized	2,485	2,496	2,665	2,917	3,985	2,595	3,236	3,160	4,406	4,783
	total staff	4,887	4,810	4,655	4,993	4,903	2,913	3,767	4,080	5,887	6,150
	% immunized	51	52	57	58	81	89	86	77	75	78

Table 5.a (continued): Immunization coverage for staff of residential care facilities by health authority and health service delivery area, 2009/10 to 2017/18

Health authority		Influenza season									
		2009/10	2009/10 H1N1	2010/11	2011/12	2012/13	2013/14	2014/15	2015/16	2016/17	2017/18
VANCOUVER COASTAL	immunized	5,239	4,645	5,604	5,272	6,350	7,077	5,652	7,028	6,789	6,312
	total staff	8,564	8,564	8,073	7,816	7,652	8,491	6,672	8,215	8,233	7,750
	% immunized	61	54	69	67	83	83	85	86	82	81
Richmond	immunized	669	443	586	625	701	805	644	789	725	337
	total staff	930	930	820	903	803	918	706	894	847	447
	% immunized	72	48	71	69	87	88	91	88	86	84
Vancouver	immunized	3,342	3,138	3,734	3,445	4,196	4,827	3,881	4,493	4,612	4,396
	total staff	5,421	5,421	5,257	4,922	5,020	5,662	4,514	5,267	5,507	5,339
	% immunized	62	58	71	70	84	85	86	85	84	82
N Shore/Coast Garibaldi	immunized	1,228	1,064	1,284	1,202	1,453	1,445	1,127	1,746	1,452	1,539
	total staff	2,213	2,213	1,996	1,991	1,829	1,911	1,452	2,054	1,879	1,964
	% immunized	55	48	64	60	79	76	78	85	77	78
VANCOUVER ISLAND	immunized	3,596	-	4,101	4,166	5,852	6,068	6,350	6,240	6,005	6,660
	total staff	8,382	-	8,681	8,244	8,370	8,429	8,941	9,049	8,834	9,446
	% immunized	43	-	47	51	70	72	71	69	68	71
South Van Island	immunized	2,069	-	2,255	2,170	3,263	3,273	3,487	3,316	3,229	3,682
	total staff	4,364	-	4,322	4,016	4,563	4,475	4,992	4,936	4,748	5,200
	% immunized	47	-	52	54	72	73	70	67	68	71
Central Van Island	immunized	1,132	-	1,398	1,441	1,894	2,107	2,163	2,194	2,020	2,221
	total staff	3,043	-	3,283	3,218	2,828	3,106	3,117	3,212	3,120	3,273
	% immunized	37	-	43	45	67	68	69	68	65	68
North Van Island	immunized	395	-	448	555	695	688	700	730	756	757
	total staff	975	-	1,076	1,010	979	848	832	901	966	973
	% immunized	41	-	42	55	71	81	84	81	78	78

Table 5.a (continued): Immunization coverage for staff of residential care facilities by health authority and health service delivery area, 2009/10 to 2017/18

Health authority		Influenza season									
		2009/10	2009/10 H1N1	2010/11	2011/12	2012/13	2013/14	2014/15	2015/16	2016/17	2017/18
NORTHERN	immunized	529	424	777	835	1,273	1,035	1,099	974	1,078	1,156
	total staff	1,651	1,647	1,584	1,792	1,828	1,432	1,558	1,544	1,562	1,596
	% immunized	32	26	49	47	70	72	71	63	69	72
Northwest	immunized	177	132	284	296	394	287	327	271	292	333
	total staff	434	457	458	511	495	368	401	382	416	439
	% immunized	41	29	62	58	80	78	82	71	70	76
Northern Interior	immunized	270	225	369	423	616	574	594	542	597	612
	total staff	828	801	842	875	866	769	857	843	833	838
	% immunized	33	28	44	48	71	75	69	64	72	73
Northeast	immunized	82	67	124	116	263	174	178	161	189	211
	total staff	389	389	284	406	467	295	300	319	313	320
	% immunized	21	17	44	29	56	59	59	50	60	66
BC	immunized	18,454	-	20,350	21,535	27,617	25,040	27,167	27,363	29,891	31,667
	total staff	37,400	-	36,660	37,700	36,620	31,836	35,133	36,068	40,243	41,755
	% immunized	49	-	56	57	75	79	77	76	74	76

Coverage excluding privately funded residential care facilities

Table 6.a: Number and percent of residential care facilities reporting influenza vaccination coverage for staff by health authority, 2017/18 (excluding privately funded residential care facilities)

Health authority	Residential care facilities		
	Reported	Total	% reported
Interior	67	70	96
Fraser	89	93	96
Vancouver Coastal	19	22	86
Vancouver Island	58	60	97
Northern	14	14	100
British Columbia	247	259*	95

Table 7.a: Influenza vaccination coverage for staff of residential care facilities by health authority and health service delivery area, 2017/18 (excluding privately funded residential care facilities)

Health authority	Residential care facility staff		
	Immunized	Total	%
Interior	5,169	7,193	71
East Kootenay	584	902	65
Kootenay Boundary	331	496	67
Okanagan	2,974	4,159	72
Thompson/Cariboo/Shuswap	1,280	1,636	78
Fraser	10,522	13,391	79
Fraser East	2,276	2,892	79
Fraser North	3,966	4,942	80
Fraser South	4,280	5,557	77
Vancouver Coastal	2,237	2,873	78
Richmond	331	388	85
Vancouver	1,176	1,1440	82
N Shore/Coast Garibaldi	730	1,045	70
Vancouver Island	5,553	7,783	71
South Vancouver Island	2,821	3,996	71
Central Vancouver Island	1,975	2,814	40
North Vancouver Island	757	973	78
Northern	1,054	1,427	73
Northwest	333	439	76
Northern Interior	501	668	75
Northeast	211	320	66
BC	24,526	32,667	75

APPENDIX

Additional vaccination and Policy compliance information for staff of residential care facilities British Columbia, 2017/18

Since 2013/14, health authority staff covered by the Influenza Prevention Policy have been required to self-report their influenza vaccination via an online self-reporting website. For the first time, in the 2015/16 season, all staff were asked to self-report either being vaccinated, or declining vaccination with the commitment to wear a mask in patient care areas throughout the influenza season. Online self-reporting was only possible for facilities that use the electronic Workplace Health Indicator Tracking and Evaluation (WHITE) database of occupational health records.

This appendix presents self-reported compliance with the policy and other vaccination information for all residential care staff in the WHITE database.

Objectives

- i) To quantify the percentages of staff in residential care facilities in British Columbia who self-reported vaccination or vaccine declinations as per the Influenza Prevention Policy
- ii) To quantify self-reported vaccination and vaccine declinations by job type among residential care staff
- iii) To quantify influenza vaccine provider type among residential care staff

Methods

The only source of data for analyses in this appendix is an anonymized individual healthcare worker level dataset from the electronic Workplace Health Indicator Tracking and Evaluation (WHITE) database of occupational health records. For methodology used in this appendix, refer to methods in the primary analysis.

For the purposes of analysis and reporting, we assume that HCWs who did not report (14% across BC) are unvaccinated; however, a proportion of these HCWs may have been immunized. Therefore, the results presented earlier in this report may underestimate vaccination coverage.

Data on 'policy compliance status' (Table 2.b) originates from the self-reporting website at which staff have the option to record their vaccination or vaccine declination. The self-reporting website populates each HCW's WHITE database record. Data on HCWs' job descriptions (Table 3) is recorded in WHITE using job codes designated by Health Sector Compensation Information Systems (HSCIS). HSCIS codes are grouped into 162 subfamilies, which have been further collapsed into 8 job categories and 1 'other' category for the purposes of this report. Data on the immunizer type (Table 4) is reported by staff on the self-reporting website.

Table 1.b: Residential care facilities with healthcare worker immunization data in WHITE database, by health authority 2017/18

Health authority	Residential Care Facilities		
	WHITE data	Total	% in WHITE
Interior	32	83	39
Fraser	15	102	15
Vancouver Coastal	18	62	29
Vancouver Island	16	82	20
Northern	14	24	58
British Columbia	95	365	26

Table 2.b: Policy compliance status for staff of the 95 residential care facilities with healthcare worker immunization data in WHITE database by health authority, health service delivery area, 2017/18

Health authority	Residential care facility staff						Total
	Vaccinated	%	Declined	%	Not reported	%	
Interior	2,705	82	367	11	244	7	3,316
East Kootenay	537	85	64	10	32	5	633
Kootenay Boundary	304	70	68	16	64	15	436
Okanagan	1,177	81	157	11	112	8	1,446
Thompson/Cariboo/Shuswap	687	86	78	10	36	4	801
Fraser	2,075	80	252	10	259	10	2,586
Fraser East	539	83	41	6	67	10	647
Fraser North	647	81	82	10	68	9	797
Fraser South	889	78	129	11	124	11	1,142
Vancouver Coastal	2,192	78	213	8	423	15	2,828
Richmond	331	85	17	4	40	10	388
Vancouver	1,176	82	83	6	181	13	1,440
N Shore/Coast Garibaldi	685	69	113	11	202	20	1,000
Vancouver Island	1,658	69	46	2	693	29	2,397
South Vancouver Island	846	65	32	2	416	32	1,294
Central Vancouver Island	624	72	9	1	236	27	869
North Vancouver Island	188	80	5	2	41	18	234
Northern	1,045	73	195	14	187	13	4,427
Northwest	333	76	40	9	66	15	439
Northern Interior	501	75	82	12	85	13	668
Northeast	211	66	73	23	36	11	320
BC	9,675	77	1,073	9	1,806	14	12,554

† Only 95 of 351(27%) of residential care facilities in the province have data in the WHITE database. The data presented in this appendix do not include aggregate reporting from the BCCDC Web application.

Table 3.b: Policy compliance status for staff of the 95 residential care facilities with healthcare worker immunization data in WHITE database by job type, 2017/18

	Residential care facility staff						Total
	Vaccinated	%	Declined	%	Not reported	%	
Health care assistant	4,990	76	535	8	1,082	16	6,607
Nurse	2,370	79	288	10	330	11	2,990
Admin and Support	1,194	73	155	10	277	17	1,626
Allied health [‡]	326	89	15	4	24	7	365
Management or Leadership	304	87	13	4	34	10	351
Business	61	66	8	9	23	25	92
Pharmacy staff	41	84	5	10	3	6	49
Other	22	96	0	0	1	4	23
Laboratory worker	14	74	2	11	3	16	19
Non-lab technologists	8	89	1	11	0	0	9
Total	9,675	†77	1,073	9	1,806	14	*12,554

*Missing 423/12,554 (3%) residential care staff whose job description type was unavailable.

†Only 94 of 353 (27%) of residential care facilities in the province have data in the WHITE database. The data presented in this appendix do not include aggregate reporting from the BCCDC Web application.

‡ Allied health refers to professions in health care other than medicine and nursing (e.g. dietitians, occupational/physical/respiratory therapists, social workers etc.).

Table 4.b: Immunizer type for staff of the 95 residential care facilities with healthcare worker immunization data in WHITE database by health authority, 2017/18

Health Authority		IHA	FHA	VCHA	VIHA	NHA	Total
Flu Clinic Nurse	No.	971	441	815	555	345	3,127
	%	36	21	37	33	33	32
Peer Nurse Immunizer	No.	610	814	480	594	270	2,768
	%	23	39	22	36	26	29
Pharmacist	No.	772	532	560	340	288	2,492
	%	29	26	26	21	28	83
Family Physician	No.	70	162	166	58	26	482
	%	3	8	8	3	2	5
Public Health	No.	170	28	46	56	83	383
	%	6	1	2	3	8	4
Other	No.	102	89	102	42	26	361
	%	4	4	5	3	3	4
Unknown	No.	10	9	23	13	7	62
	%	0	0	1	1	1	1
Total	No.	2,705	2,075	2,192	1,658	1,045	9,675

Summary

2017/18 is the third season in which WHITE data was analyzed to determine use of the self-reporting system, vaccination rates by job type, and immunizer type. Interpretation of these data is limited by the low participation in WHITE for residential care facilities.

The pattern of lower influenza vaccine uptake for 'Business', 'Laboratory worker' and 'Admin and Support' staff suggests that direct patient care is influential in the decision to be vaccinated.

The majority of residential care staff are immunized at work by a flu clinic nurse, peer nurse immunizer, or pharmacist. Regional variability in immunizer type may be indicative of the availability of immunizing personnel in the community as well as management decisions in how to deliver the influenza vaccine program to HCWs at the workplace.