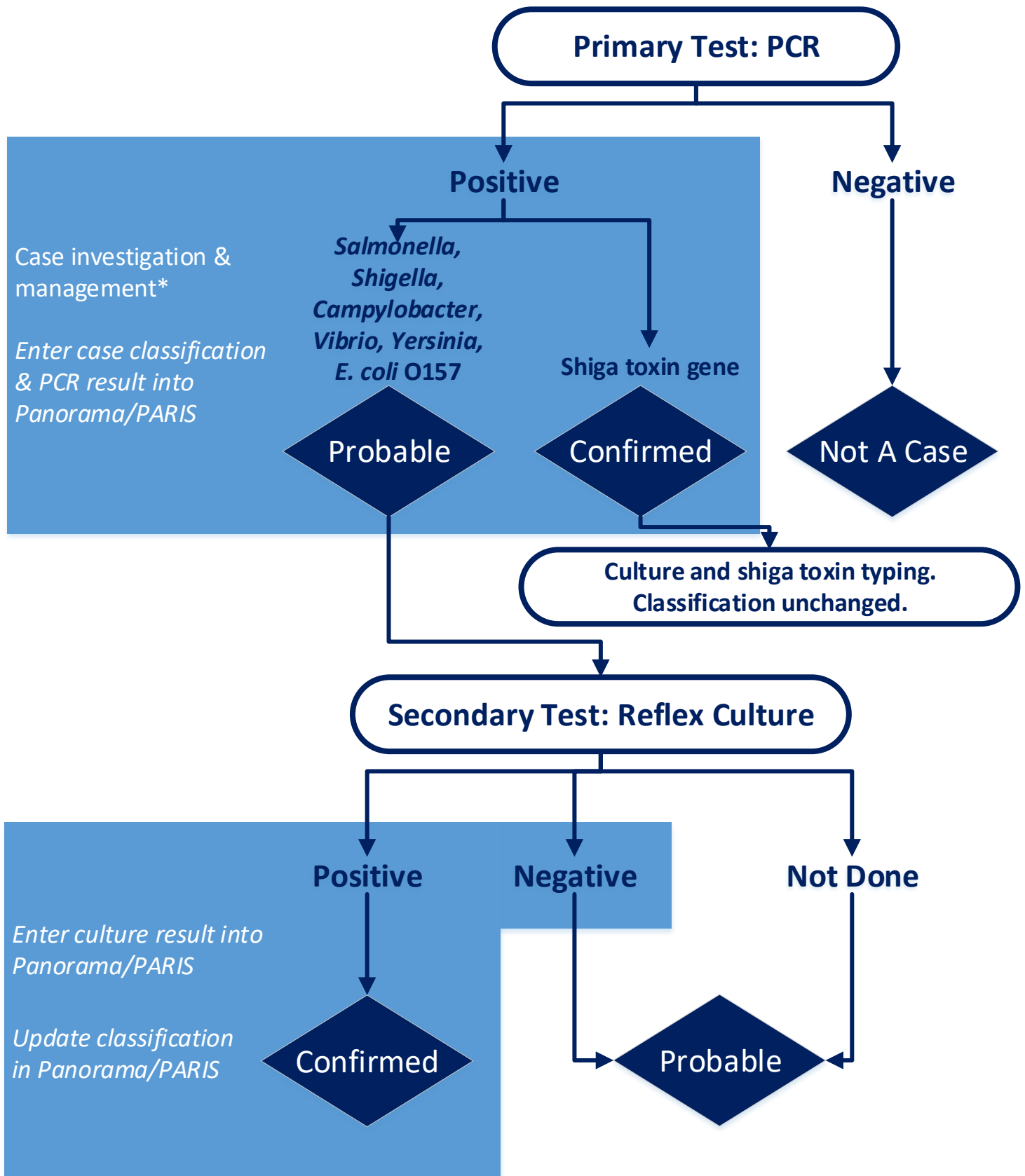


Workflow for enteric bacterial pathogens case classification



*In the event of an unexpected increase in cases, HA may prioritize full case follow-up based on the following considerations:

1. Situations where exclusion is required
2. Communicability of the pathogen
3. Severity of the disease
4. Presence of or potential for outbreak
5. Cases are symptomatic and with clear onset

Case definitions: <http://www.bccdc.ca/health-professionals/clinical-resources/case-definitions>

Updated: Jan 24, 2023