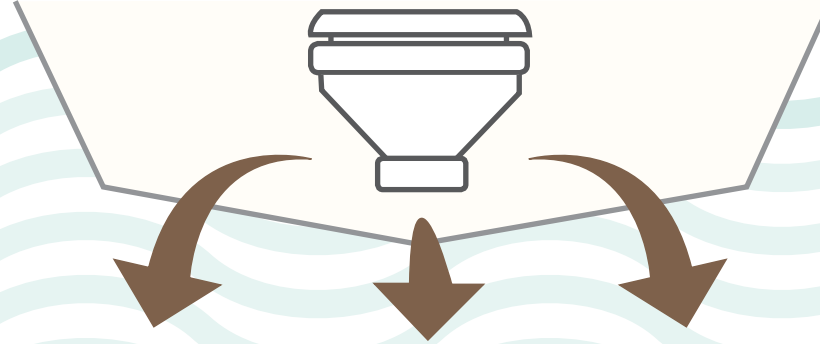
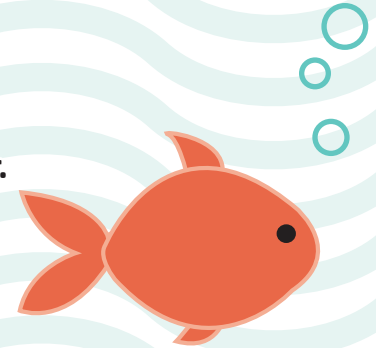




# Complying with Sewage Discharge Regulations



Transport Canada regulations **prohibit** the discharge of **raw sewage** directly into the water. Your sewage discharge affects fish and bivalve shellfish (oysters, clams and mussels), causing contamination which can threaten human health. A violation of this regulation can carry a fine of up to \$1 million or up to 18 months of imprisonment, or both.



Here's what you can do to comply:

## OPTION 1

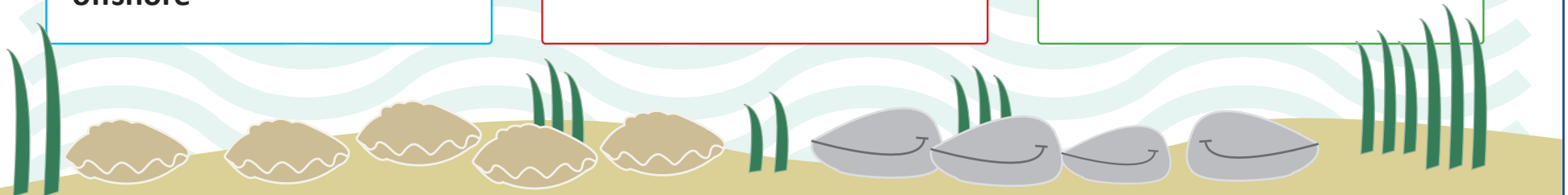
Use a **MARINE SANITATION DEVICE**, or discharge 3nm offshore

## OPTION 2

Use a **HOLDING TANK and PUMP-OUT STATION**  
(Visit [www.ahoybc.com/map](http://www.ahoybc.com/map) to find one near you)

## OPTION 3

Use a **TEMPORARY STORAGE** like a porta-potty



Contact Transport Canada's Office of Boating Safety at 604-666-2681 or email: [TC.PAC.TM.OBS-BSN.TC@TC.GC.CA](mailto:TC.PAC.TM.OBS-BSN.TC@TC.GC.CA) about regulatory requirements. *Vessel Pollution and Dangerous Chemicals Regulations* are online at: <http://www.laws-lois.justice.gc.ca/eng/regulations/SOR-2012-69/page-1.html>