

Weekly Reporting of COVID-19 Cases, Hospitalizations, Critical Care Admissions, and Deaths, Data up to September 03, 2022

Section A: Numbers for COVID-19 Cases, Hospitalizations, Critical Care Admissions, and Deaths

Table 1: Weekly Reporting of COVID-19 Cases, Hospitalizations, Critical Care Admissions, and Deaths¹

		Health Authority					Total
		FHA	IHA	NHA	VCH	VIHA	
Cases reported	Aug. 28 - Sep. 03	231	114	37	149	86	617
	Aug. 21 - Aug. 27	229	153	34	128	107	651
Hospital admissions	Aug. 28 - Sep. 03 ³	42	29	11	40	25	147
	Aug. 21 - Aug. 27	80	31	9	46	32	198
Critical care admissions	Aug. 28 - Sep. 03 ³	11	6	2	5	1	25
	Aug. 21 - Aug. 27	14	5	0	5	3	27
30-day all-cause mortality²	Aug. 28 - Sep. 03 ³	6	8	1	4	3	22
	Aug. 21 - Aug. 27	12	12	0	7	12	43
	Aug. 14 - Aug. 20	15	10	1	13	12	51

¹ Numbers provided for previous weeks may differ from week to week as data become more complete and are updated over time.

² Includes COVID-19 and non-COVID-19 related deaths occurring within 30 days from a positive lab result. See Data Notes for more information.

³ Numbers are expected to increase as data become more complete.

Table 2: Cumulative totals¹ of COVID-19 Cases, Hospitalizations, Critical Care Admissions, and Deaths

		Health Authority					OOC ²	Total
		FHA	IHA	NHA	VCH	VIHA		
Cases reported		168,106	68,183	30,910	77,454	38,010	391	383,054
Hospital admissions		12,435	4,579	2,200	5,509	2,822	17	27,562
Critical care admissions		2,593	1,035	812	1,153	442	4	6,039
30-day all-cause mortality³	Pre-transition (case linelist)	1,348	367	330	716	241	0	3,002
	Post-transition (automated linkage)	398	249	46	262	226	0	1,181

¹ COVID-19 surveillance in BC began in January 2020. The transition to weekly reporting on April 2, 2022 corresponded to changes in data sources. See Data Notes for more information.

² OOC = Out of country

³ See Data Notes for more information.

Section B: Data Notes

- **Cases.** Total [COVID-19 cases](#) include lab-confirmed, lab-probable and epi-linked cases. From January 2020 to April 1, 2022 cases included those reported by the health authorities and positive laboratory results in the Provincial Laboratory Information Solution or Sunquest. As of April 2, 2022 only cases with positive laboratory results in the Provincial Laboratory Information Solution or Sunquest are included. The number of cases is reported by the day of their lab result.
- From January 2020 to April 1, 2022 cases were reported by health authority of residence or reporting health authority; cases whose primary residence is outside of Canada were reported as “Out of Canada”. As of April 2, 2022 health authority is based on the case’s address provided during lab testing and cases from outside of BC are not included. Please note that the health authority of residence and the health authority reporting the case do not necessarily indicate the location of exposure or transmission.
- **Hospital admissions.** From January 2020 to April 1, 2022, hospitalizations include those reported by the health authorities. As of April 2, 2022, hospitalizations are defined as individuals who test positive for COVID-19, regardless of the reason for admission, as recorded in the Provincial Health Services Authority’s Provincial COVID-19 Monitoring Solution. Hospital admissions are limited to only those hospitalizations with positive PCR tests, and do not include those that are confirmed by Rapid Antigen Test only. Single day episodes (e.g. admission, discharge on same date) are excluded. Hospital admission is reported by date of admission.
- **Critical care admissions.** Critical care admissions (High Acuity Unit, Intensive Care Unit, and critical care surge beds) include individuals who test positive for COVID-19 and are in critical care admission as recorded in the Provincial Health Service Authority’s Provincial COVID-19 Monitoring Solution. Critical care admission is reported by date of critical care admission.
- **Deaths.** From January 2020 to April 1, 2022, deaths include those reported by the health authorities. As of April 2, 2022, deaths are any COVID-19 lab positive cases who have died from any cause (COVID-19 or non-COVID-19, as recorded in Vital Statistics, BC Ministry of Health) within 30 days of their first positive lab result date. Death is reported by date of death. All-cause mortality is being used because cause of death takes approximately 8 weeks to be recorded. Retrospective evaluations of underlying cause of death will be done by the BCCDC, in addition to the data provided in this report, to better understand true COVID-19 mortality.
- Hospitalizations, critical care admissions, and deaths may be incomplete (i.e. under-estimated) in the most recent weeks owing to the data systems timing and processes.
- Numbers provided for previous weeks may differ from week to week as data become more complete and are updated over time.
- Provincial BCCDC COVID-19 products provide information on cases, hospitalizations and deaths:
 - [BCCDC COVID data trends](#) – Main webpage for dashboards, reports and maps related to COVID-19.
 - [BC COVID-19 Dashboard](#) – Provincial and health authority level reporting of case incidence, death, hospitalization and laboratory data.
 - [Situation Report](#) – This report provides a more in-depth look at COVID-19 epidemiology, data and key trends including wastewater surveillance.
 - [COVID-19 Vaccination Coverage Dashboard](#) – Provincial and regional reporting of vaccination coverage data.
 - [Variant report](#) – Information on variants in BC.
 - [BCCDC COVID-19 Epi App](#) – Death, hospitalization, and vaccine data for regional and global comparisons.
- The [BCCDC Mortality App](#) reports on all-cause deaths in the province, including COVID-19.

Section C: Supplementary Figures

Figure 1: 7-Day Average Count of COVID-19 Hospitalizations, Critical Care Admissions, and Deaths by age groups

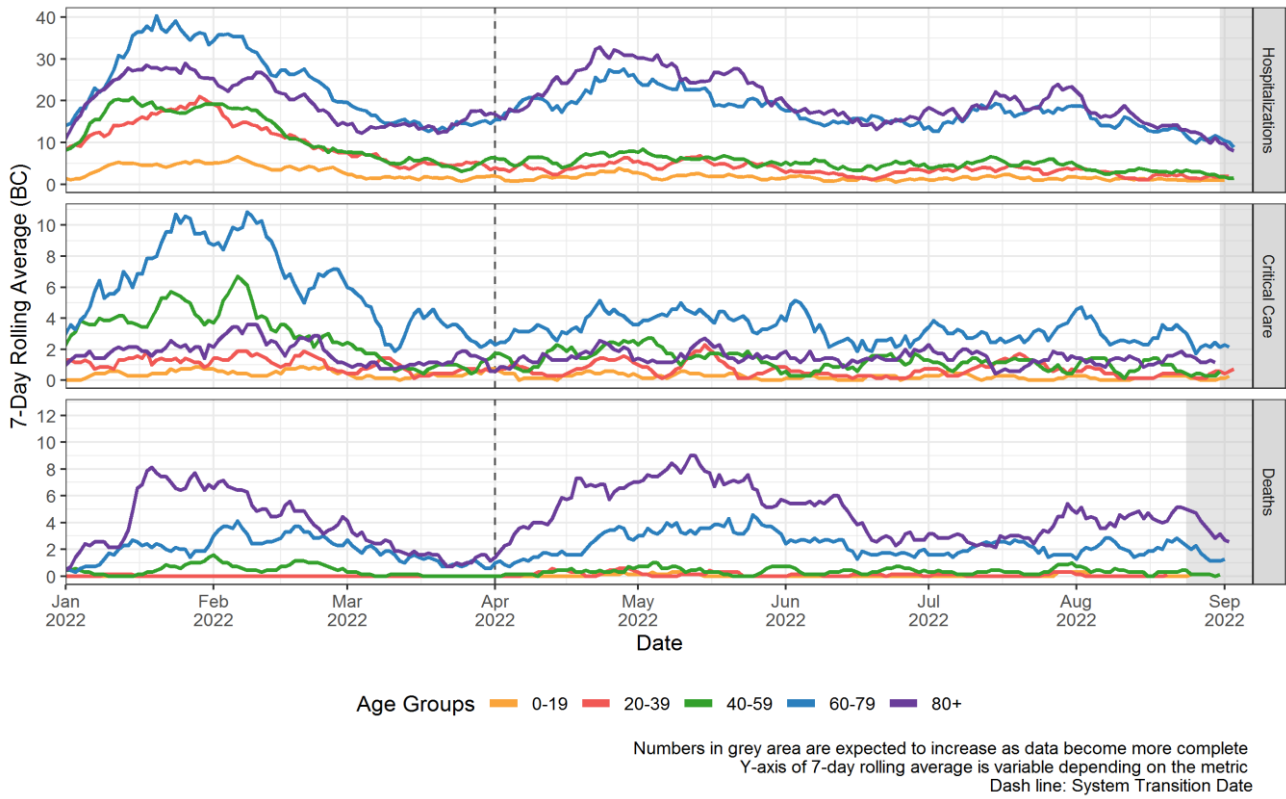


Figure 2: 7-Day Average Count of COVID-19 Hospitalizations, Critical Care Admissions, and Deaths by Health Authority

