



Weekly Reporting of COVID-19 Cases, Hospitalizations, and Deaths

Data up to May 21, 2022

Section A: Numbers for COVID-19 Cases, Hospitalizations, and Deaths

Table 1: Weekly Reporting of COVID-19 Cases, Hospitalizations, and Deaths¹

	Health Authority					Total
	FHA	IHA	NHA	VCH	VIHA	
Cases reported						
May. 15 - May. 21	465	281	86	295	231	1,358
May. 08 - May. 14	588	371	93	325	267	1,644
Hospital admissions						
May. 15 - May. 21 ³	129	43	15	55	40	282
May. 08 - May. 14	174	76	18	82	38	388
30-day all-cause mortality²						
May. 15 - May. 21 ³	14	8	0	13	7	42
May. 08 - May. 14	39	14	5	18	10	86
May. 01 - May. 07	27	14	4	25	16	86

¹ Numbers provided for previous weeks may differ from week to week as data become more complete and are updated over time.

² Includes COVID-19 and non-COVID-19 related deaths occurring within 30 days from a positive lab result. See Data Notes for more information.

³ Numbers in grey area are expected to increase as data become more complete.

Table 2: Cumulative totals¹ of COVID-19 Cases, Hospitalizations, and Deaths

	Health Authority					OOC ²	Total
	FHA	IHA	NHA	VCH	VIHA		
Cases reported							
	163,515	66,085	30,219	74,596	35,753	391	370,559
Hospital admissions							
	10,526	3,974	1,995	4,468	2,000	17	22,980
30-day all-cause mortality³							
Pre-transition (case linelist)	1,348	367	330	716	241	0	3,002
Post-transition (automated linkage)	151	103	16	108	89	0	467

¹ COVID-19 surveillance in BC began in January 2020. The transition to weekly reporting on April 2, 2022 corresponded to changes in data sources. See Data Notes for more information.

² OOC = Out of country

³ See Data Notes for more information.



Section B: Data Notes

- **Cases.** Total [COVID-19 cases](#) include lab-confirmed, lab-probable and epi-linked cases. From January 2020 to April 1, 2022 cases included those reported by the health authorities and positive laboratory results in the Provincial Laboratory Information Solution or Sunquest. As of April 2, 2022 only cases with positive laboratory results in the Provincial Laboratory Information Solution or Sunquest are included. The number of cases is reported by the day of their lab result.
- From January 2020 to April 1, 2022 cases were reported by health authority of residence or reporting health authority; cases whose primary residence is outside of Canada were reported as “Out of Canada”. As of April 2, 2022 health authority is based on the case’s address provided during lab testing and cases from outside of BC are not included. Please note that the health authority of residence and the health authority reporting the case do not necessarily indicate the location of exposure or transmission.
- **Hospitalizations.** From January 2020 to April 1, 2022, hospitalizations include those reported by the health authorities. As of April 2, 2022, hospitalizations are defined as those individuals who had any COVID-19 hospitalization recorded in the Provincial Health Services Authority’s Provincial COVID-19 Monitoring Solution. Single day episodes (e.g. admission, discharge on same date) are excluded. Hospital admissions is reported by date of admission.
- **Deaths.** From January 2020 to April 1, 2022, deaths include those reported by the health authorities. As of April 2, 2022, deaths are any COVID-19 lab positive cases who have died from any cause (COVID-19 or non-COVID-19, as recorded in Vital Statistics, BC Ministry of Health) within 30 days of their first positive lab result date. Death is reported by date of death. All-cause mortality is being used because cause of death takes approximately 8 weeks to be recorded. Retrospective evaluations of underlying cause of death will be done by the BCCDC, in addition to the data provided in this report, to better understand true COVID-19 mortality.
- Hospitalizations and deaths may be incomplete (i.e. under-estimated) in the most recent weeks owing to the data systems timing and processes.
- Numbers provided for previous weeks may differ from week to week as data become more complete and are updated over time.
- Provincial BCCDC COVID-19 products provide information on cases, hospitalizations and deaths:
 - [BCCDC COVID data trends](#) – Main webpage for dashboards, reports and maps related to COVID-19.
 - [BC COVID-19 Dashboard](#) – Provincial and health authority level reporting of case incidence, death, hospitalization and laboratory data.
 - [BCCDC Regional Surveillance Dashboard](#) – Provincial and regional reporting of case, hospitalization, critical care, and vaccine data, including interactive maps.
 - [BCCDC COVID-19 Epi App](#) – Case incidence, death, hospitalization, laboratory and limited vaccine data for regional and global comparisons.
 - [Situation Report](#) – provides a more in-depth look at COVID-19 epidemiology, data and key trends including wastewater surveillance and MIS-C.
 - [Variant report](#) – Information on variants in BC.
- The [BCCDC Mortality App](#) reports on all-cause deaths in the province, including COVID-19.



Section C: Supplementary Figures

Figure 1: 7-Day Average Count of COVID-19 Cases, Hospitalizations, and Deaths by age groups

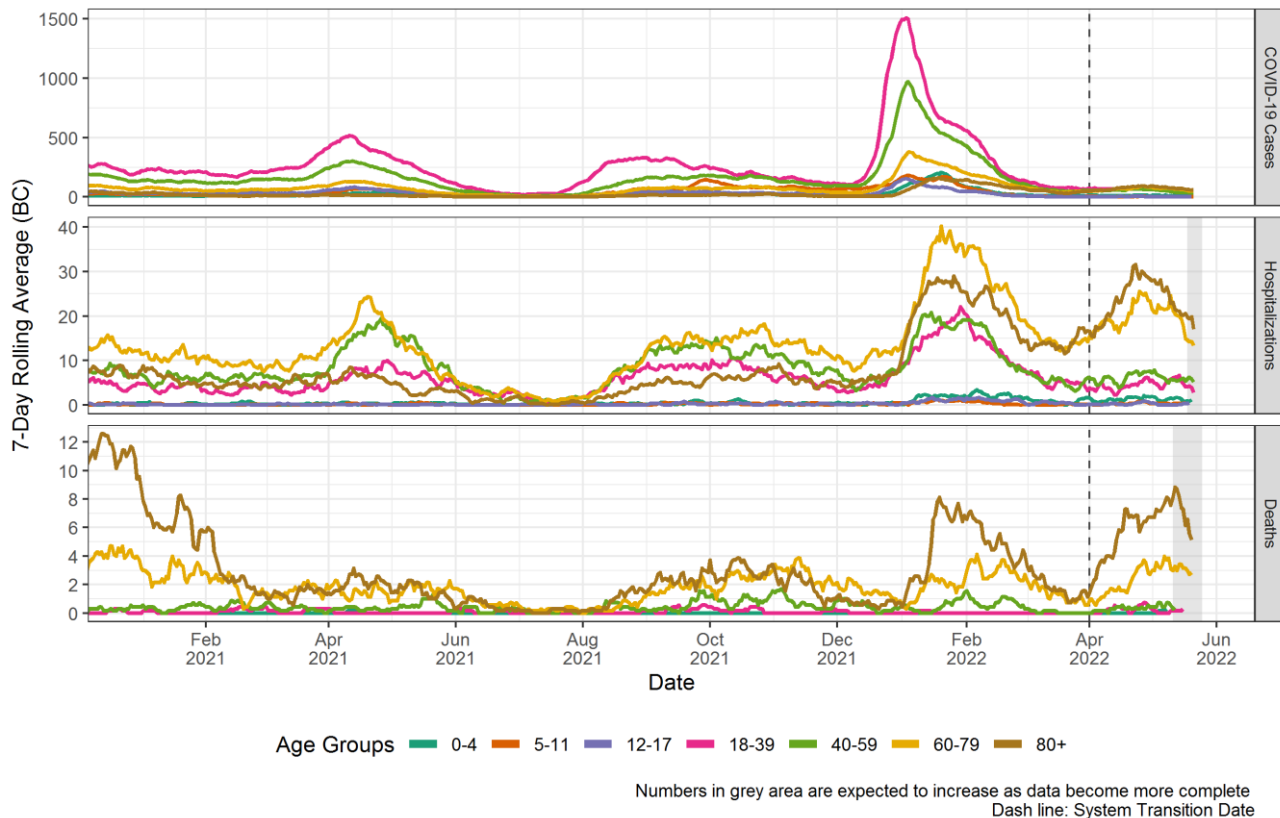


Figure 2: 7-Day Average Count of COVID-19 Cases, Hospitalizations, and Deaths by Health Authority

