

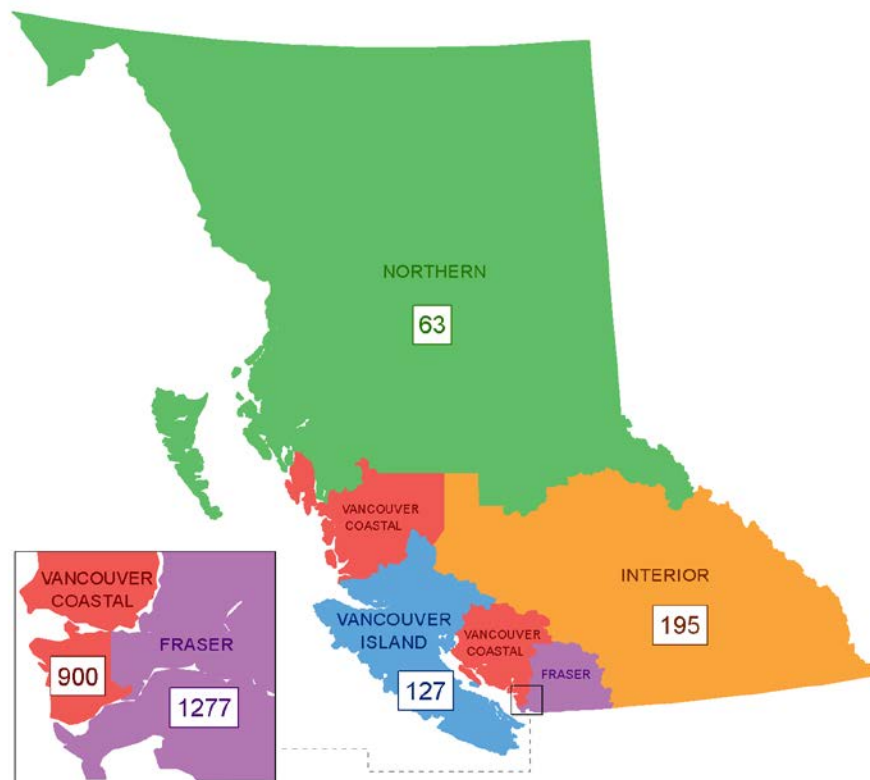
British Columbia COVID-19 Daily Situation Report, May 29, 2020*

Key Findings

COVID-19 risk in BC is currently very low.

- Most regions have reported very few cases in recent weeks (Table 1, Fig 2-3).
- The vast majority of recent cases had a known source of infection or were still under investigation (Fig 4).
- The proportion of people who tested positive remains low (Fig 6).
- The number of reported cases among children remains low, few required hospitalization and none have died (Table 3, Fig 7).
- This week, one new outbreak was reported, and two outbreaks were declared over (Fig 9, Table 4).
- Very few new hospitalisations have been reported in the last week (Fig 5).
- The number of cases in hospital and critical care is low and stable (Fig 10-11).
- The BC epidemic trajectory remains favourable compared to other Canadian provinces and other countries (Fig 12-13).

Figure 1: Map of COVID-19 cases reported by health authority, BC, January 1 - May 29, 2020 (N=2,562)



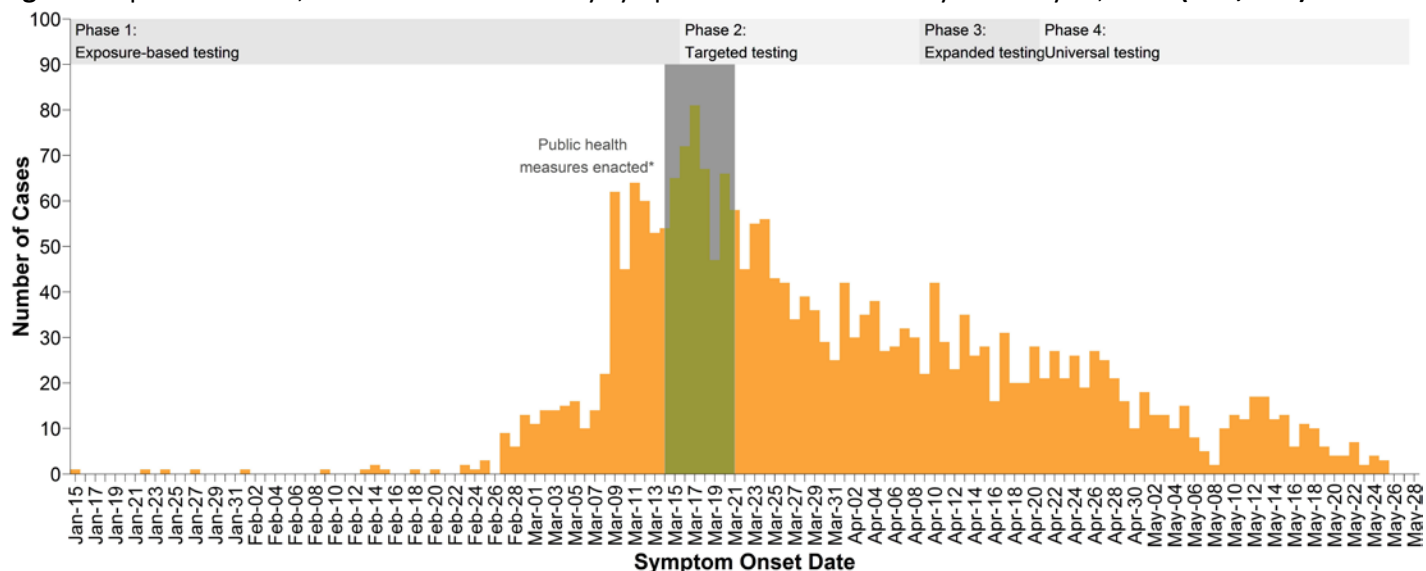
*Findings are based on confirmed cases and probable lab cases (case definition found here: [http://www.bccdc.ca/health-professionals/clinical-resources/case-definitions/covid-19-\(novel-coronavirus\)](http://www.bccdc.ca/health-professionals/clinical-resources/case-definitions/covid-19-(novel-coronavirus))) reported from Health Authorities to BCCDC as of 10am, except where otherwise noted. Data represent a subset of actual infections and are subject to change with changes in testing recommendations and practices, changes in case definitions, data reconciliation and/or as data become more complete.

Table 1: Epidemiological profile of reported cases by health authority, BC, January 1 - May 29, 2020 (N=2,562)

	Fraser	Interior	Vancouver Island	Northern	Vancouver Coastal	Total N (%) ^b
Total number of cases^a	1,277	195	127	63	900	2,562
New cases since yesterday^c	3	0	0	0	1	4
Median age in years, cases ^d	51	48	52	47	55	52 years (range 0-103y)
Female sex, cases	641	91	68	37	495	1,332/2,562 (52%)
Cumulative incidence per 100,000 population^e	66.6	24.3	14.9	21.0	72.6	50.1
Ever hospitalized^f	253	29	25	12	172	491 (19%)
Median age in years, ever hospitalized ^d	69	62	72	48	69	69 years (range 0-98y)
Currently hospitalized ^f	18	1	1	1	13	34
Currently in critical care^g	1	0	0	1	4	6
Total number of deaths^f	71	2	5	0	86	164 (6%)
New deaths since yesterday^c	0	0	0	0	0	0
Median age in years, deaths ^d	83	73	85	NA	87	85 years (range 47-103y)
Discontinued isolation^h	1,068	188	121	61	732	2,170 (85%)

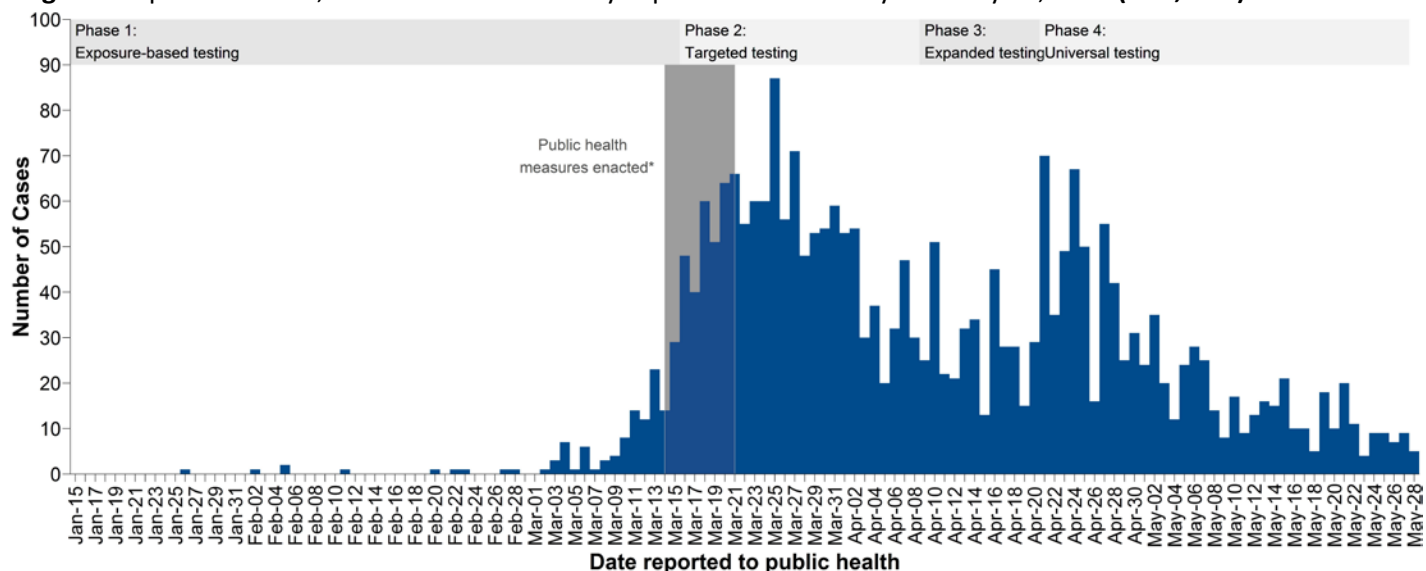
- a. Cases include confirmed and laboratory-probable cases. Provincial COVID-19 case definitions are found here: [http://www.bccdc.ca/health-professionals/clinical-resources/case-definitions/covid-19-\(novel-coronavirus\)](http://www.bccdc.ca/health-professionals/clinical-resources/case-definitions/covid-19-(novel-coronavirus)).
- b. Denominator for % derivation is total number of cases (N), except sex for which denominator is as specified for those with known information on sex.
- c. "New" cases and deaths reflect the difference in counts reported to the BCCDC between one day and the next as of 10am. This may not be equal to the number of cases/deaths by date reported to HA, as: (1) cases/deaths reported prior to 10am would be included as new cases/deaths in the current day's count and cases reported after 10am would be included in the next day's count; and (2) there may be some delays between cases/deaths being reported to HAs and then reported to BCCDC.
- d. Median age is calculated based on those with known information for all, hospitalized, and deceased cases (n=2,562, 491, and 164, respectively).
- e. PEOPLE2019-2020 population estimates.
- f. Serious outcomes (i.e., hospitalization, death) may be incomplete or out of date (i.e., under-estimates) owing to the timing and process for case status update.
- g. Source: PHSA May 29 @10am. The number of COVID cases in critical care units is reported daily by each Health Authority and includes the number of COVID patients in all critical care beds (e.g., intensive care units; high acuity units; and other surge critical care spaces as they become available and/or required). Work is ongoing to improve the completeness and accuracy of the data reported.
- h. Self-isolation has been discontinued per the criteria outlined in [BC guidelines for public health management of COVID-19](#).

Figure 2: Epidemic curve, COVID-19 cases in BC by symptom onset date January 15 - May 28, 2020 (N=2,390[†])



[†] Only cases with symptom onset dates reported are included; cases with symptom onset date on the same day as this report are excluded as only a portion are available at the time the data are extracted.

Figure 3: Epidemic curve, COVID-19 cases in BC by reported date January 15 - May 28, 2020 (N=2,562[‡])

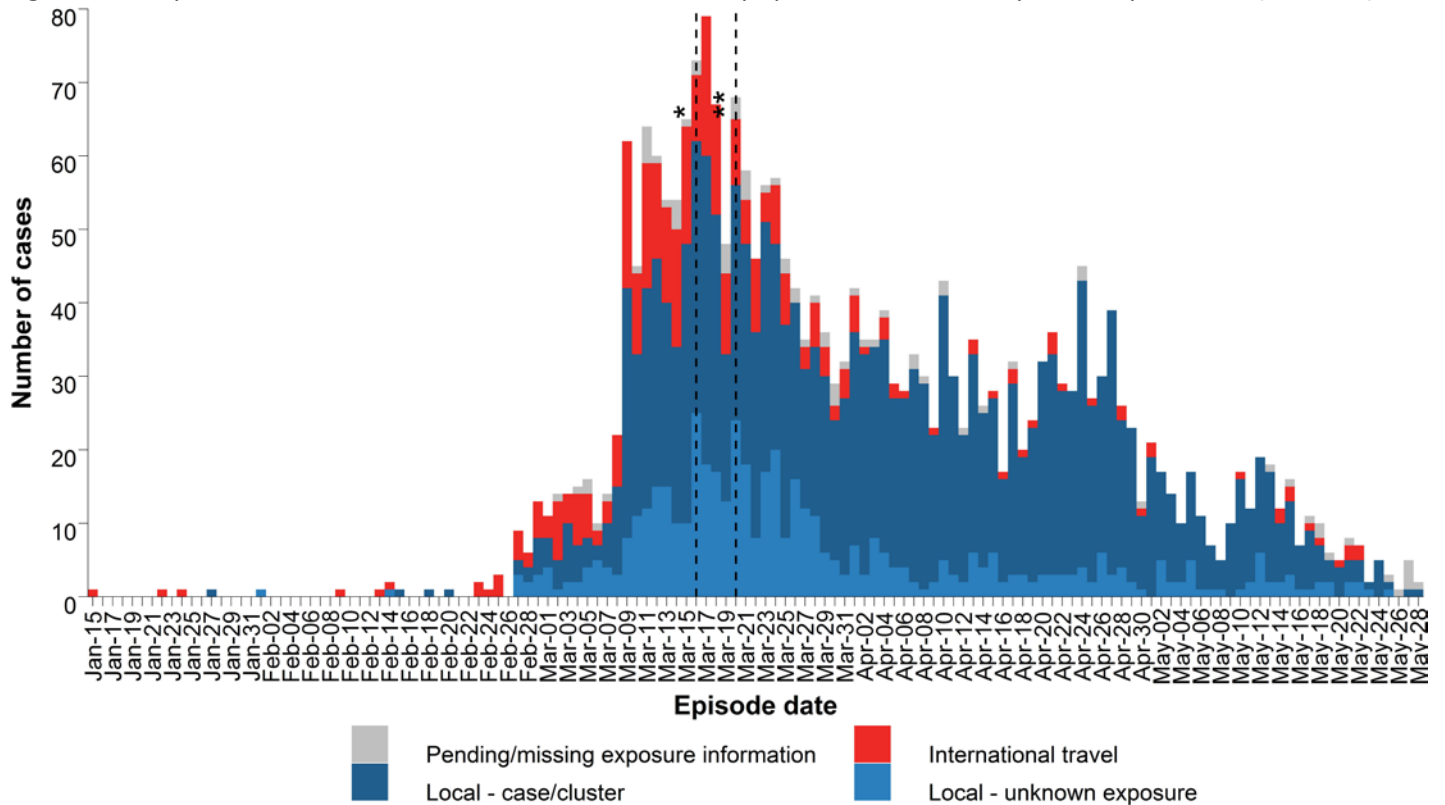


[‡] Cases reported on the same day as this report are excluded as only a portion are available at the time the data are extracted. The number of cases reported by day differs from that in Table 1 in previous reports as this figure reflects the date the case was lab-confirmed and reported to the Health Authority.

A number of public health measures were enacted during the week shaded in grey. These include: March 14: Spring break started for most schools; March 16: Mass gatherings public health order implemented (>50 people), entry of foreign nationals banned, symptomatic individuals banned from flights to Canada, international flights restricted to four national airports; March 17: BC public health emergency declared, traveller self-isolation public health order implemented; March 18: Provincial state of emergency declared, food and drink service restrictions public health order implemented; March 20: US/Canada border closed to non-essential travel; March 21: closure of personal service establishments. Please refer to <http://www.bccdc.ca/health-info/diseases-conditions/covid-19/testing/phases-of-covid-19-testing-in-bc> for laboratory testing criteria changes.

How to interpret the epidemic curves: Figure 2 shows the date that a case’s illness started. Figure 3 shows the date the illness was confirmed and reported by the laboratory. There is a delay between the beginning of a person’s illness (symptom onset date) and the date the laboratory confirms and reports the illness (reported date). New cases only have a reported date available and appear on the right of the curve in Figure 3, but their symptom onset would have occurred prior. As information on symptom onset becomes available through public health investigation, cases are expected to appear on earlier dates in Figure 2.

Figure 4: Likely source of infection for COVID-19 cases in BC by episode date[§], January 15 - May 28, 2020 (N=2,562)



§ Episode date is based on symptom onset date (n=2,390), if not available then date COVID-19 was reported to health authority (n=172).

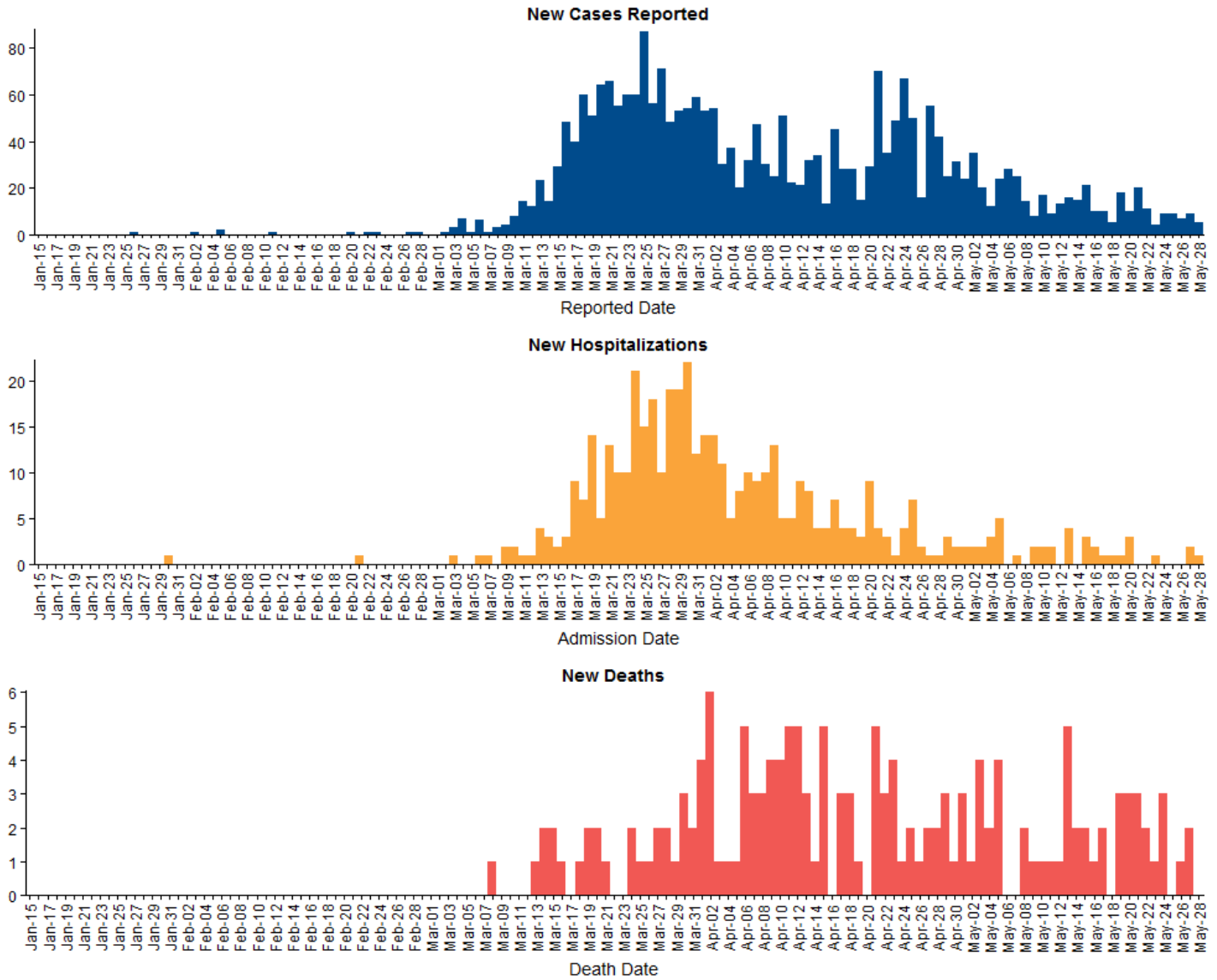
* March 16: Entry of foreign nationals banned; symptomatic individuals banned from flights to Canada; international flights restricted to four national airports.

** March 20: US/Canada border closed to non-essential travel.

Table 2: Number and proportion of likely source of infection for COVID-19 cases in BC, January 15 - May 28, 2020 (N=2,562)

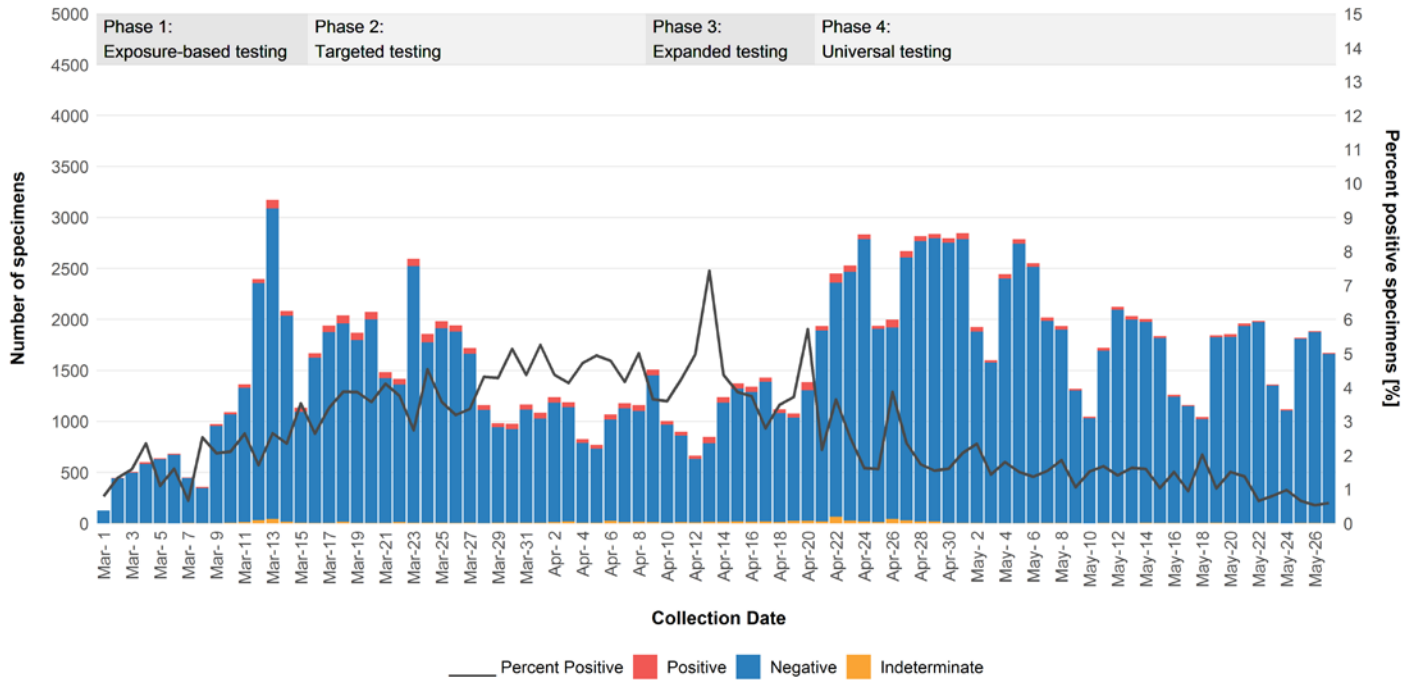
International travel n (%)	Local – case/cluster n (%)	Local – unknown source n (%)	Pending/missing info n (%)
331 (13)	1,664 (65)	489 (19)	78 (3)

Figure 5. Number of new COVID-19 cases, hospital admissions, and deaths by event date, BC, January 15 - May 28, 2020 (N=2,562*)



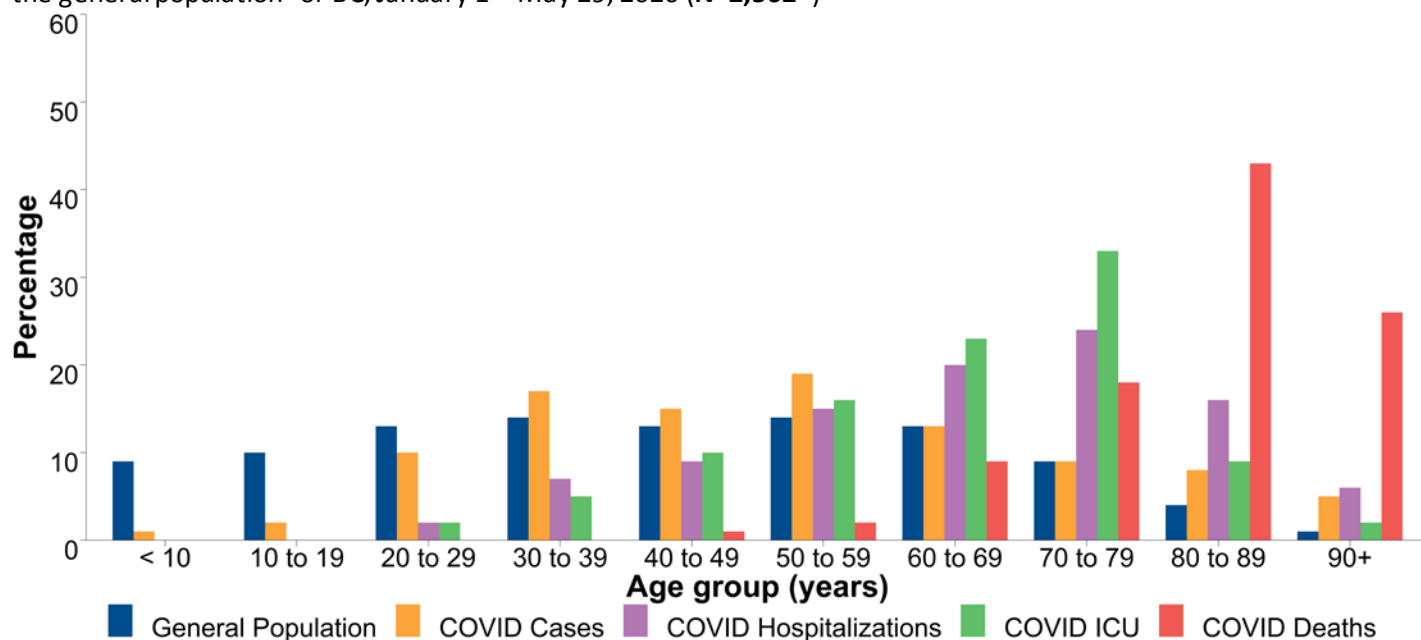
*Only includes cases with valid event dates.

Figure 6: Number and proportion of SARS-CoV-2 positive respiratory specimens, BC, March 1 – May 27, 2020 (N=139,146; Positive=2.6%)



Data source: PLOVER extract on May 29, 2020. Methods and caveats: SARS-CoV-2 specimens are tallied at the specimen level by date the specimen was collected. The proportion positive on a given date may include new positive cases and retested positive cases; this may over-estimate proportionate positivity. Similarly, individuals may be tested repeatedly after becoming negative; this may under-estimate proportionate positivity. Refer to <http://www.bccdc.ca/health-info/diseases-conditions/covid-19/testing/phases-of-covid-19-testing-in-bc> for description of laboratory testing phases.

Figure 7: Percentage distribution of COVID-19 cases, hospitalization, ICU admissions and deaths by age, compared to the general population[†] of BC, January 1 – May 29, 2020 (N=2,562*)



*Includes 2,562 cases, 491 hospitalizations, 172 ICU admissions, and 164 deceased with age information available.

† PEOPLE2019-2020 population estimates

Note: COVID hospitalizations have been reported in the <10y and 10-19y age groups but represent <1% of hospitalizations and are therefore not visible.

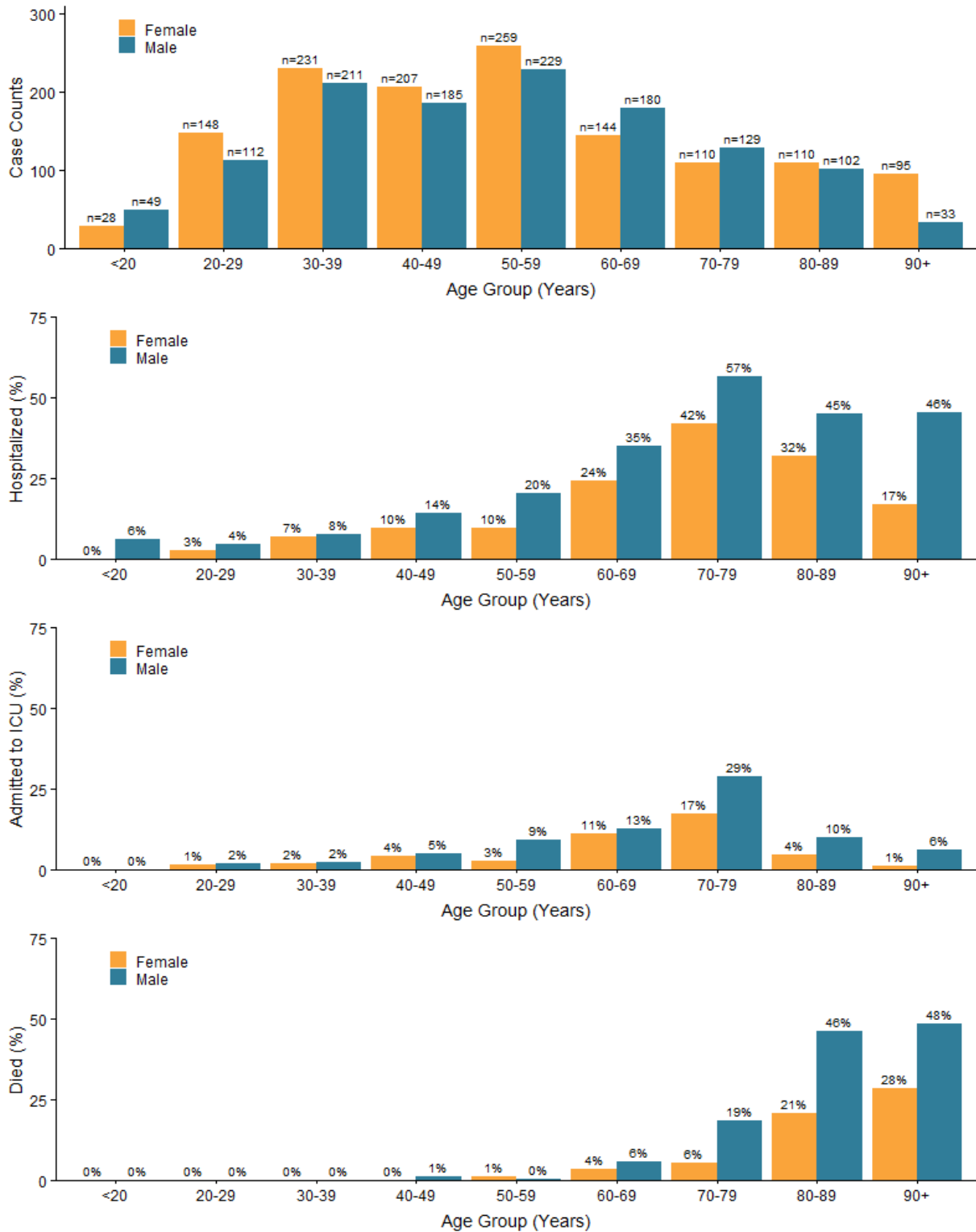
Table 3: Number and percentage distribution of COVID-19 cases, hospitalization, ICU admissions and deaths by age, compared to the general population of BC, January 1 – May 29, 2020 (N=2,562*)

Age groups	COVID cases n (%)	Cases ever hospitalized n (%)	Cases ever in ICU n (%)	COVID deaths n (%)	General population [†] n (%)
<10 Years	26 (1)	2 (<1)	0 (0)	0 (0)	468,280 (9)
10-19 Years	51 (2)	1 (<1)	0 (0)	0 (0)	507,197 (10)
20-29 Years	260 (10)	9 (2)	4 (2)	0 (0)	684,681 (13)
30-39 Years	442 (17)	32 (7)	9 (5)	0 (0)	730,523 (14)
40-49 Years	392 (15)	46 (9)	18 (10)	2 (1)	647,790 (13)
50-59 Years	488 (19)	72 (15)	28 (16)	4 (2)	721,355 (14)
60-69 Years	324 (13)	98 (20)	39 (23)	15 (9)	675,632 (13)
70-79 Years	239 (9)	119 (24)	56 (33)	30 (18)	436,179 (9)
80-89 Years	212 (8)	81 (16)	15 (9)	70 (43)	188,010 (4)
90+ Years	128 (5)	31 (6)	3 (2)	43 (26)	50,876 (1)
Total	2,562	491	172	164	5,110,523

*Only cases with age information available are included.

† PEOPLE2019-2020 population estimates

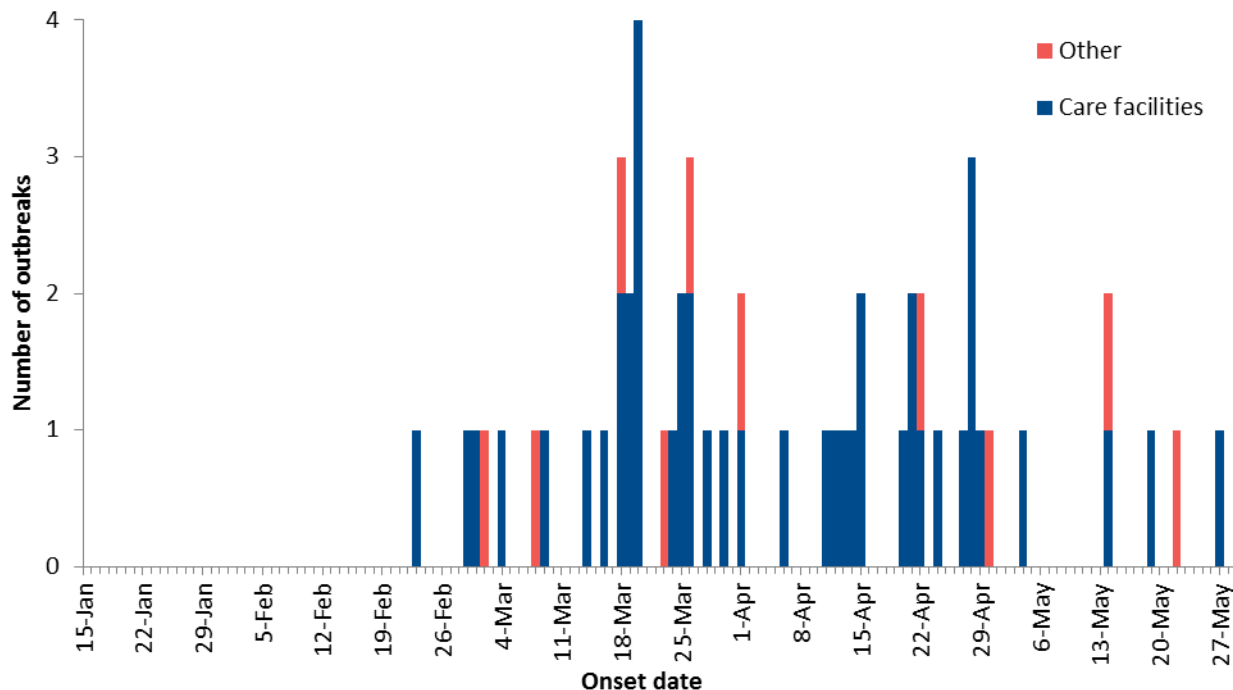
Figure 8: Counts of COVID-19 cases and proportions ever hospitalized, ever admitted to ICU, and with outcome of death by gender and age group, BC, January 1 – May 29, 2020 (N=2,562*)



* Includes cases with gender and age information available.

Note: Proportions calculated using the total number of cases in each gender and age group (displayed in top figure) as the denominator.

Figure 9: COVID-19 outbreaks* by earliest date**, BC, January 15 - May 29, 2020 (N=54)



* Care facility (acute/longterm care/independent living) outbreaks have at least one lab-confirmed COVID-19 staff or resident. Other outbreaks have two or more lab-confirmed COVID-19 cases diagnosed within a 14-day period in closed or common settings (e.g. penitentiary, shared living or work setting).

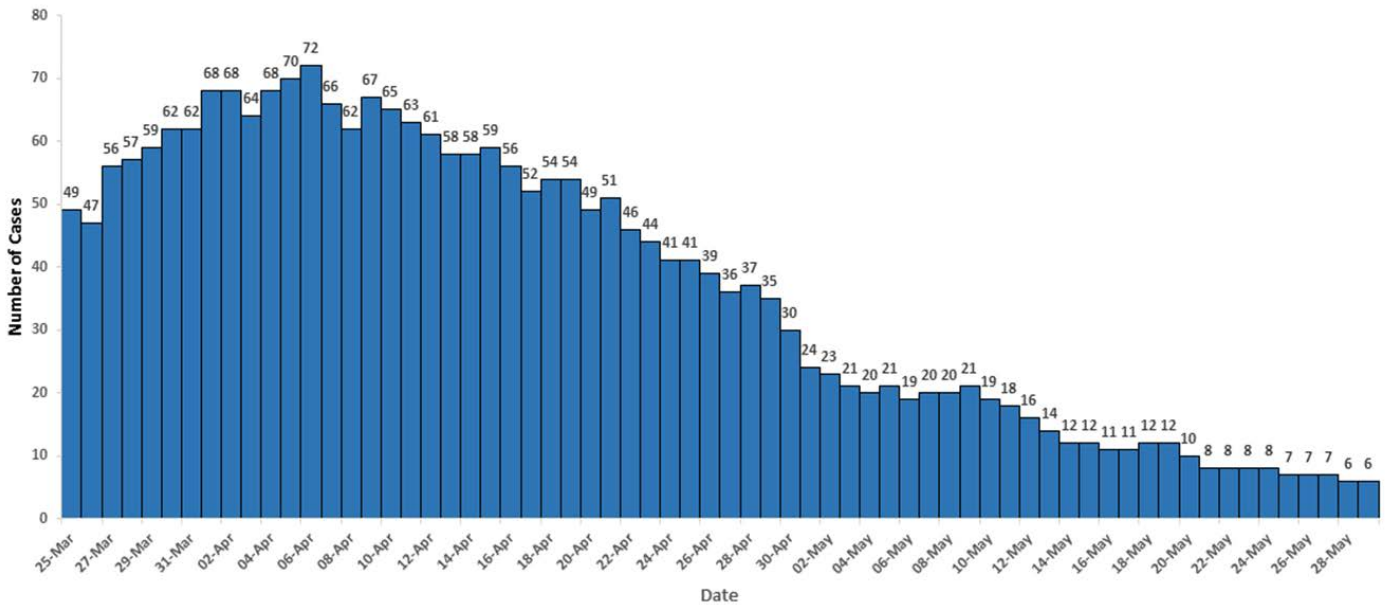
** Earliest date is date of onset of earliest case in the outbreak (or reported date of earliest case when onset is unavailable) or date outbreak was declared.

Table 4: Outbreak and case counts of reported COVID-19 reported outbreaks*, BC, January 15 - May 29, 2020 (N=54)

	Care facility	Other settings	Total
Outbreaks			
Total outbreaks	44	10	54
New since last report	0	0	0
Active outbreaks	16	5	21
Outbreaks declared over	28	5	33
Outbreak cases			
Total cases	551	389	940
Residents/patients	339	122	461
Staff/other	212	267	479
Total deaths	112	2	114
Residents/patients	112	1	113
Staff/other	0	1	1

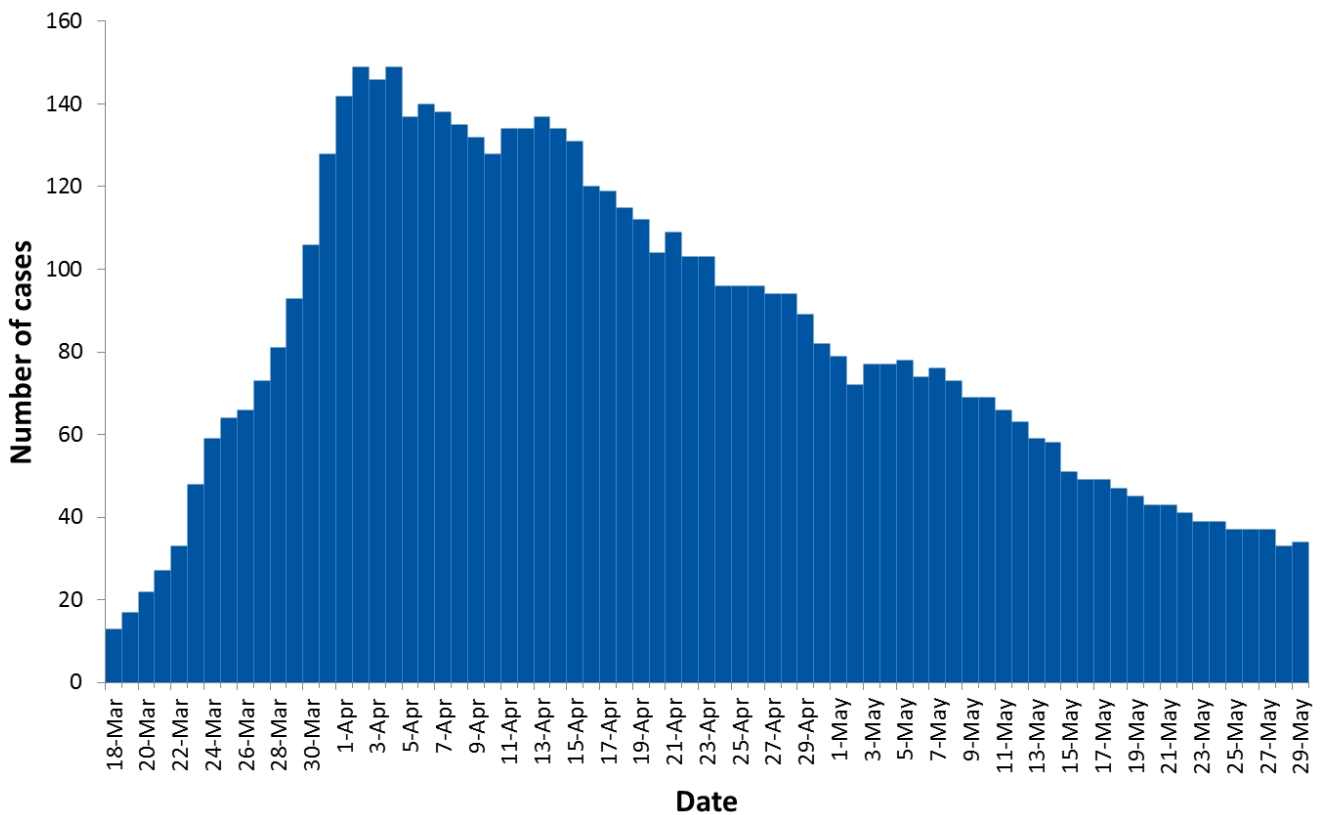
* Care facility (acute/longterm care/independent living) outbreaks have at least one lab-confirmed COVID-19 staff or resident. Other outbreaks have two or more lab-confirmed COVID-19 cases diagnosed within a 14-day period in closed or common settings (e.g. penitentiary, shared living or work setting).

Figure 10: Total positive COVID-19 cases in critical care by day, BC, March 25 - May 29, 2020



Data source: PHSA May 29. Note: critical care data may change over time due to small adjustments and improvements in data quality.

Figure 11: Number of COVID-19 cases in hospital by day, BC, March 18 - May 29, 2020



Data available starting March 18. For dates with no data available (April 12 and Sundays from May 10 onwards), the previous day's value was used. Note: Hospitalization data may be incomplete or out of date (i.e., under-estimates) owing to the timing and process for case status update. Four hospitalizations were added starting on May 3 due to data corrections. This does not reflect new admissions on that day but rather admissions occurring prior and up to this time.

International and National Epidemiological Comparisons

Figure 12: Cumulative diagnosed and new daily COVID-19 case and death rates by select countries vs BC and Canada

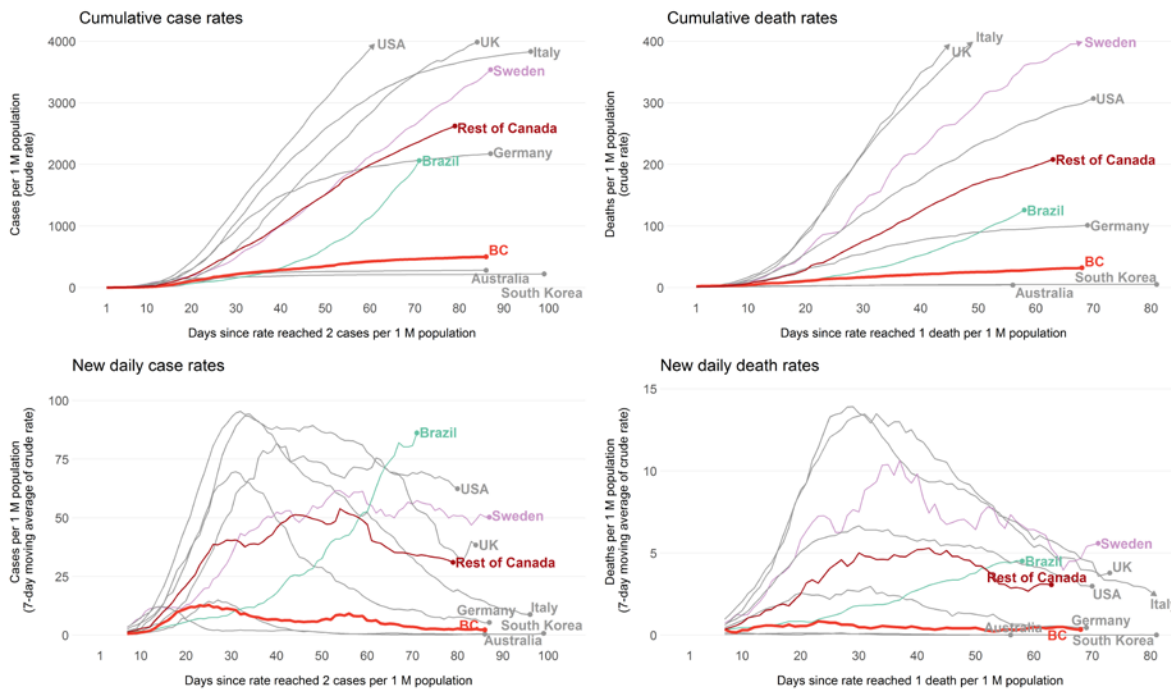
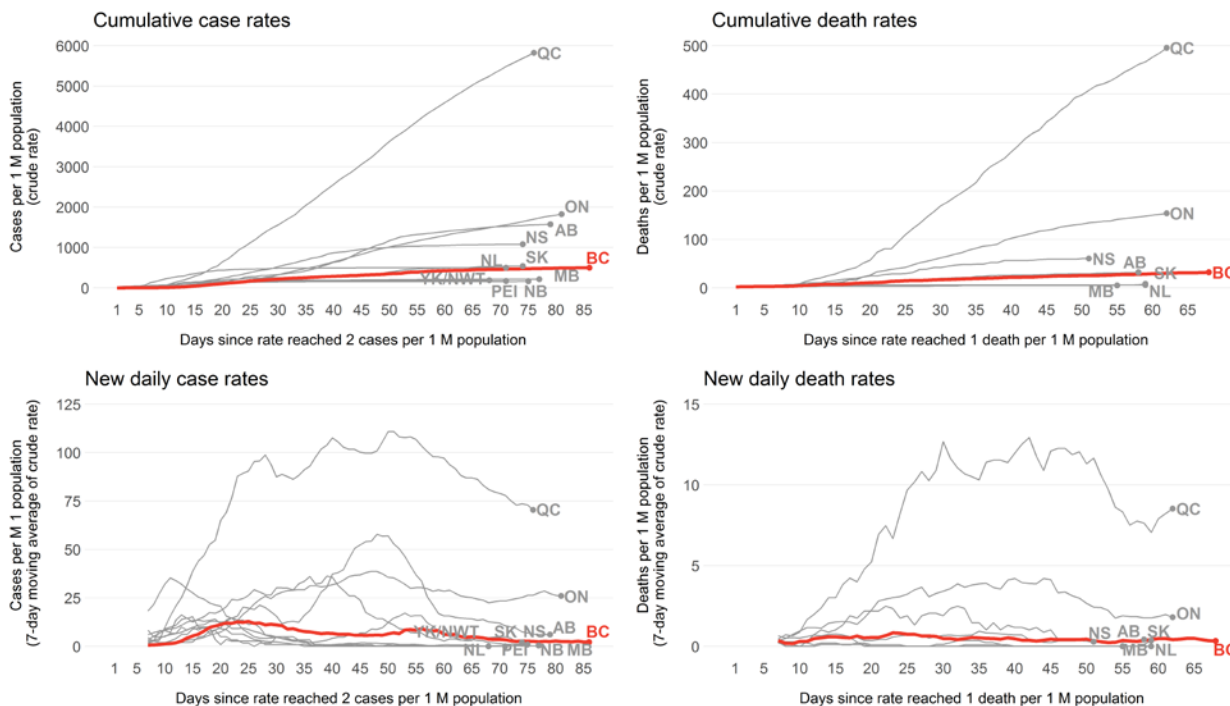


Figure 13: Cumulative diagnosed and new daily COVID-19 case and death rates in Canada



Data sources for international and national epidemiological comparison (all extracted May 28, 2020):
 JHU CSSE for global cases and deaths, and Canadian provincial deaths outside of BC s: <https://github.com/CSSEGISandData/COVID-19>
 JHU CSSE for For Canadian provincial cases: Provincial data sources
 BC cases and deaths: BCCDC
 Global population denominator from the United Nations